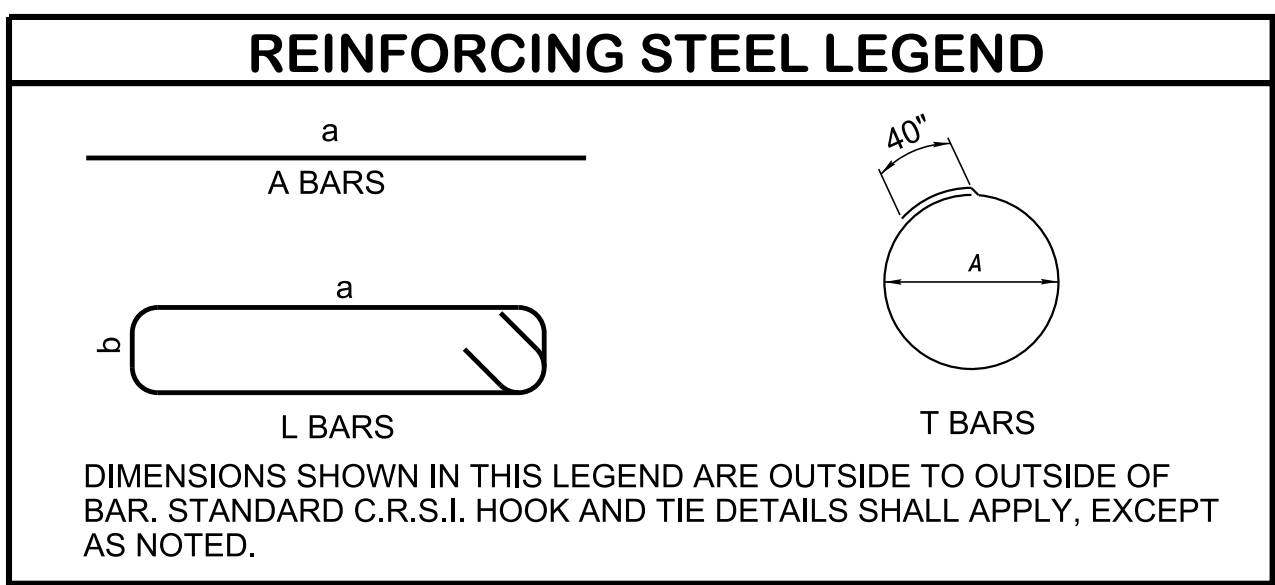


REINFORCING BAR SCHEDULE FOR ROUND CB TOP SLABS (inches)

D-CB	DIA	T500	T501	A500	A501	A502	A503	A504	A505	A506	A507	A508	A509	A510	A511	A512	A513	A514	A515	A516	A517	A518	LS301		LS302		A301	
		a	a	a	a	a	a	a	a	a	a	a	a	a	a	a	a	a	a	a	a	a	a	b	a	b		
10RA	48	51 5/8		36 1/2	44 3/8	47 5/16	31 5/16	37	7 1/8	7 7/8	11 3/8	13 8/16	14 5/8	15														
12RA	48	51 5/8		31 3/4	37 11/16	42 3/16	31 5/16	37	5 13/16	7 3/16	7 7/8	7 3/8	9 4/8	10 5/8	11													
12RB	60		65 5/8	40 3/8	49 3/8	55 7/8	58 7/8	37 11/16	45 3/8	51 3/8	55 3/16	13 5/16	14 3/8	14 7/8	15 3/16	16 13/16	17 11/16	18										
12RB	72		79 5/8	51 1/8	63 11/16	72 1/8	74 5/8	48 5/8	60 3/8	68 11/16	71 5/8	20 5/8	21 1/2	21 7/8	22 11/16	24	24 3/4	25										
12RC	84		93 5/8	52 11/16	65 5/8	75 1/8	82 5/16	87 11/16	89 11/16	50 7/8	63	72 3/16	79 5/16	84 13/16	87 3/16	27 7/8	28 11/16	29	30 1/8	31 3/16	31 13/16							
12RC	96		107 5/8	61 1/8	77	88 3/8	96 11/16	102 13/16	104	59 5/16	74 5/8	85 11/16	94	100 5/16	102	35	35 13/16	36	37 3/8	38 2/8	38 13/16							
12RC	108		121 5/8	69 1/2	88 3/8	101 5/8	111	117 5/8	119	67 11/16	86	99	108 1/2	115 3/8	117	42 1/8	42 13/16	43	44 5/8	45 3/8	45 13/16							
12RC	120		135 5/8	77 7/8	99 11/16	114 11/16	125 3/16	132 3/16	134	76 3/16	97 6/16	112 3/16	122 7/8	130 5/16	132	49 3/16	49 13/16	50	51 11/16	52 3/8	52 7/8							
13RA	48	SAME AS 12RA																										
13RB	60	SAME AS 12RB																										
13RB	72	SAME AS 12RB																										
13RC	84	SAME AS 12RC																										
13RC	96	SAME AS 12RC																										
13RC	108	SAME AS 12RC																										
13RC	120	SAME AS 12RC																										
14RB	96		107 5/8	109 1/2	47 5/8	57	64 11/16	56 3/8	70 3/8	81	89 3/16	95 11/16	100 11/16	102 13/16	104	14	23 2/16	27 11/16	31 3/16	34	36 1/8	37 5/8						
25RA	48	SAME AS 12RA																										
25RB	60	SAME AS 12RB																										
25RB	72	SAME AS 12RB																										
25RB	84	SAME AS 12RC																										
25RB	96	SAME AS 12RC																										
31R	84		93 5/8	95 3/8	47	57 5/16	54 5/16	67 7/8	77 5/8	84 13/16	87 3/16	14	16 1/8	20 5/16	23 3/8	25 11/16	27 1/2											
38RB	60		65 5/8	36 3/16	43 1/8	48 1/2	53	56 1/2	13 5/8	14 7/8	15 11/16	16																
38RB	72		79 5/8	45 5/8	56 1/8	63 7/8	69 7/8	72 5/8	21	22 1/8	22 13/16	23																
38RB	84		93 5/8	55	68 7/8	78 11/16	85 13/16	88 2/16	28 5/16	29 3/16	29 13/16	30																
38RB	96		107 5/8	64 5/16	81 3/8	93 1/8	101 3/16	103 2/16	35 1/2	36 5/16	36 13/16	37																
39RB	84		93 5/8	52 13/16	65 11/16	75 3/16	79 1/2	20 5/16	21 3/16	21 13/16	22												52	52	60	60		
39RB	96		107 5/8	63 13/16	80 11/16	92 5/16	95 7/8	27 1/2	28 5/16	28 13/16	29												52	52	60	60		
41RB	60	SAME AS 12RB																										
41RB	72	SAME AS 12RB																										
41RB	84	SAME AS 12RC																										
41RB	96	SAME AS 12RC																										
42RB	60	SAME AS 38RB																										
42RB	72	SAME AS 38RB																										
42RB	84	SAME AS 38RB																										
42RB	96	SAME AS 38RB																										
43R	96		107 5/8	109 1/2	48 7/8	59	67 3/16	56 11/16	70 13/16	81 3/8	89 11/16	96 1/8	101 1/4	103	22 7/8	27 11/16	31 3/16	33 13/16	35 3/5	14	36 11/16	37	96	48	90	46	36	



- GENERAL NOTES**
- (A) THE PURPOSE OF THIS DRAWING IS TO PROVIDE A BAR REINFORCEMENT SCHEDULE FOR ROUND CATCH BASIN LIDS
 - (B) DIMENSION DETERMINED BY GEOMETRY. TOLERANCE FOR BAR LOCATIONS AND LENGTH IS +/- 0.5"
 - (C) REINFORCING STEEL: ASTM A615, Fy = 60,000 PSI.

STATE OF TENNESSEE
STANDARD DRAWING
DEPARTMENT OF TRANSPORTATION

BILL OF STEEL
FOR ROUND
CATCH BASIN LIDS

10/28/2021 8:15:17 AM P:\StandDraw\DESIGN STANDARDS\Standards Library\Standard Roadway Drawings - CURRENT\In Progress\10-102.00 Catch Basins and Manholes IP\102.01 Catch Basins IP\DCB99RA-20211029.dgn