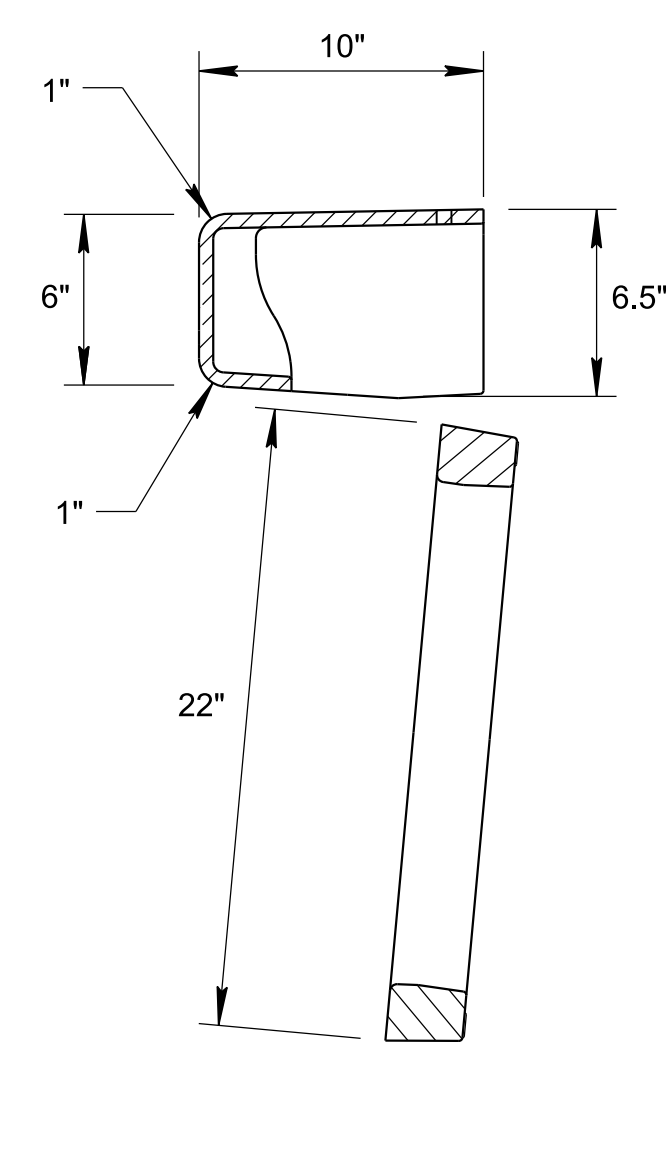
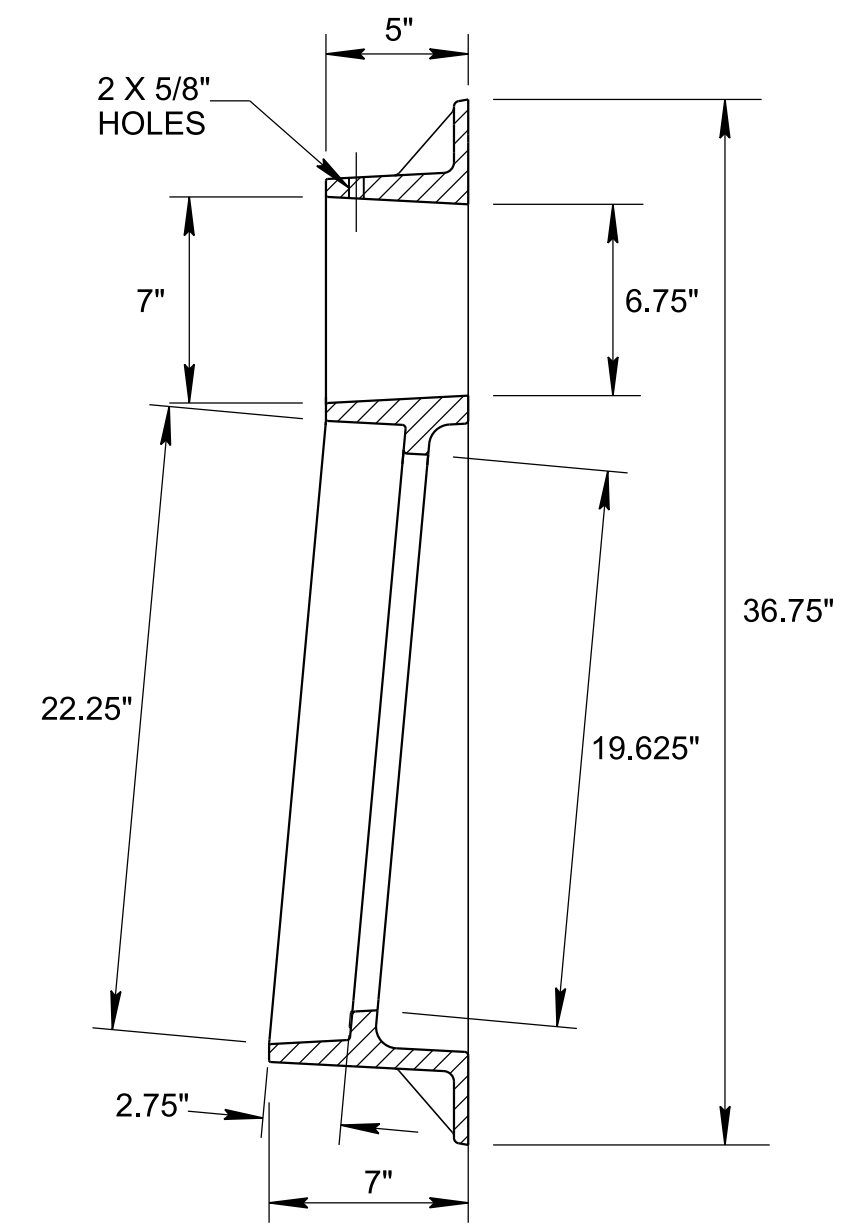


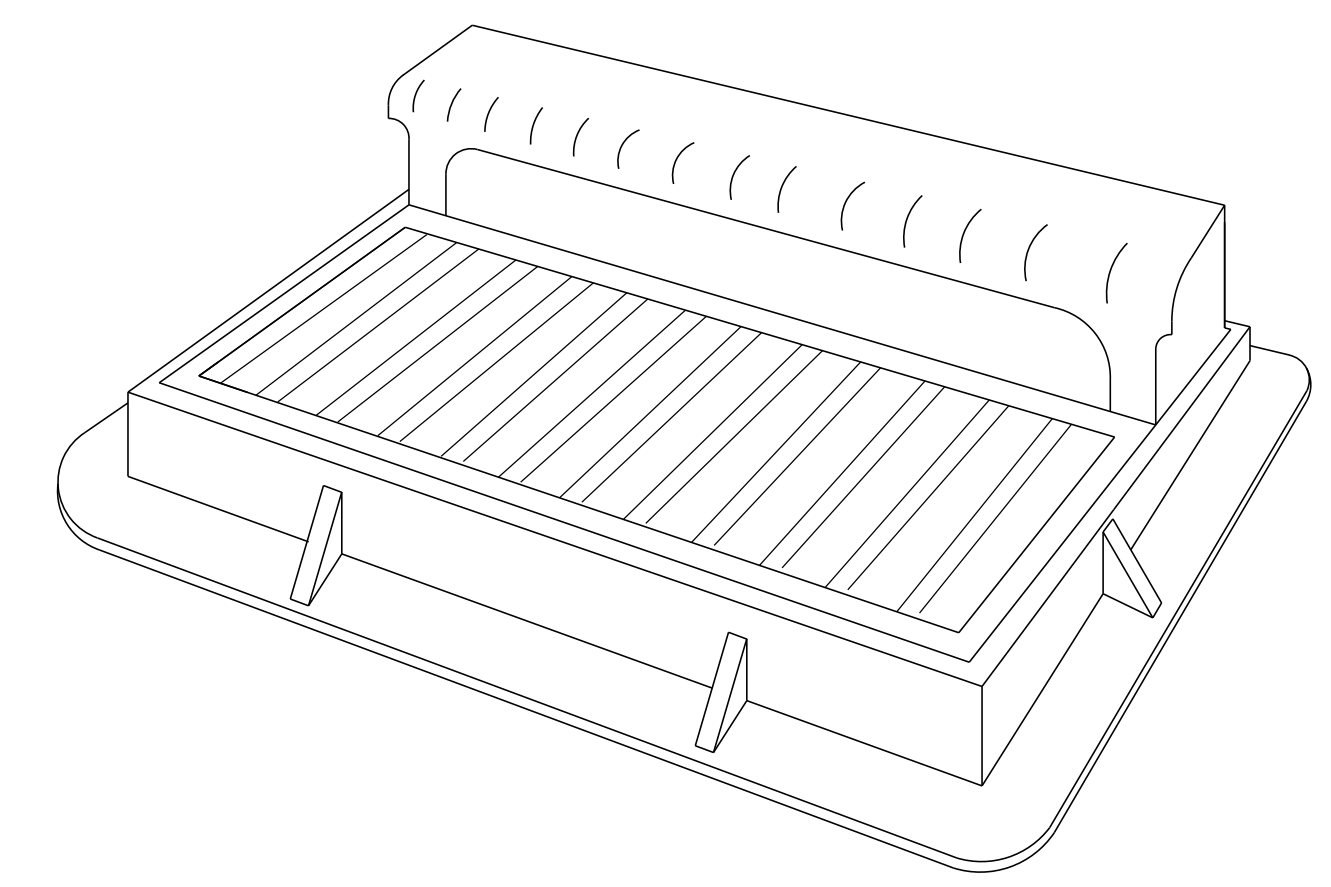
TOP VIEW



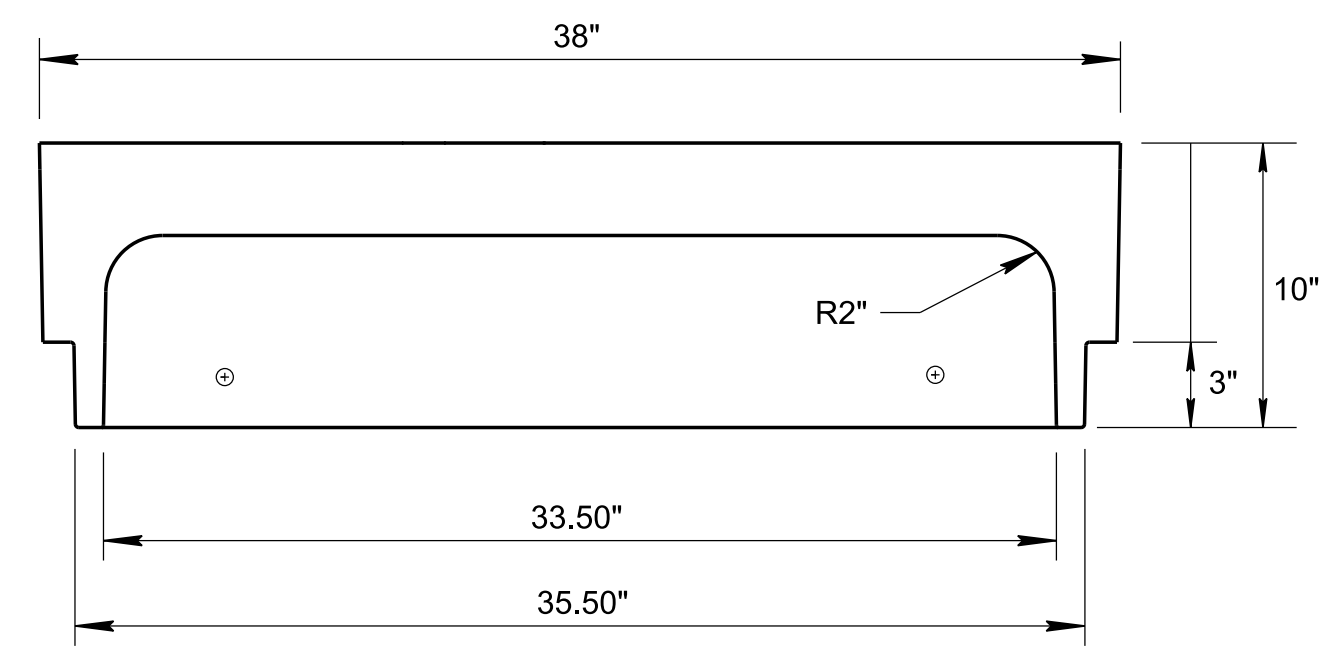
CURB HOOD AND GRATE DIMENSIONS



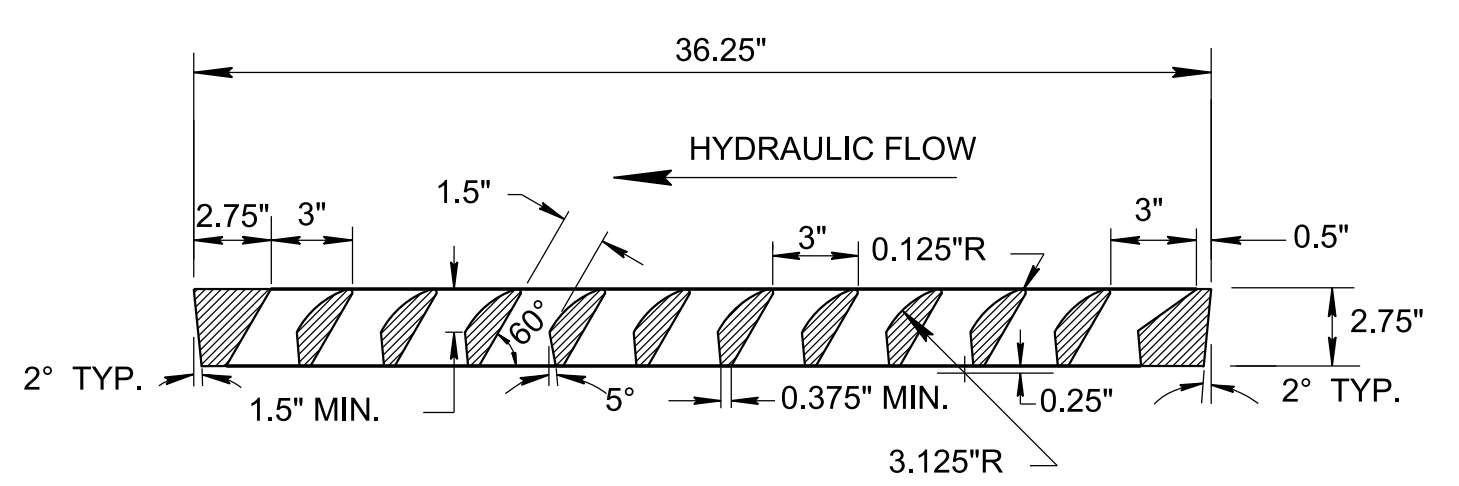
FRAME DIMENSION



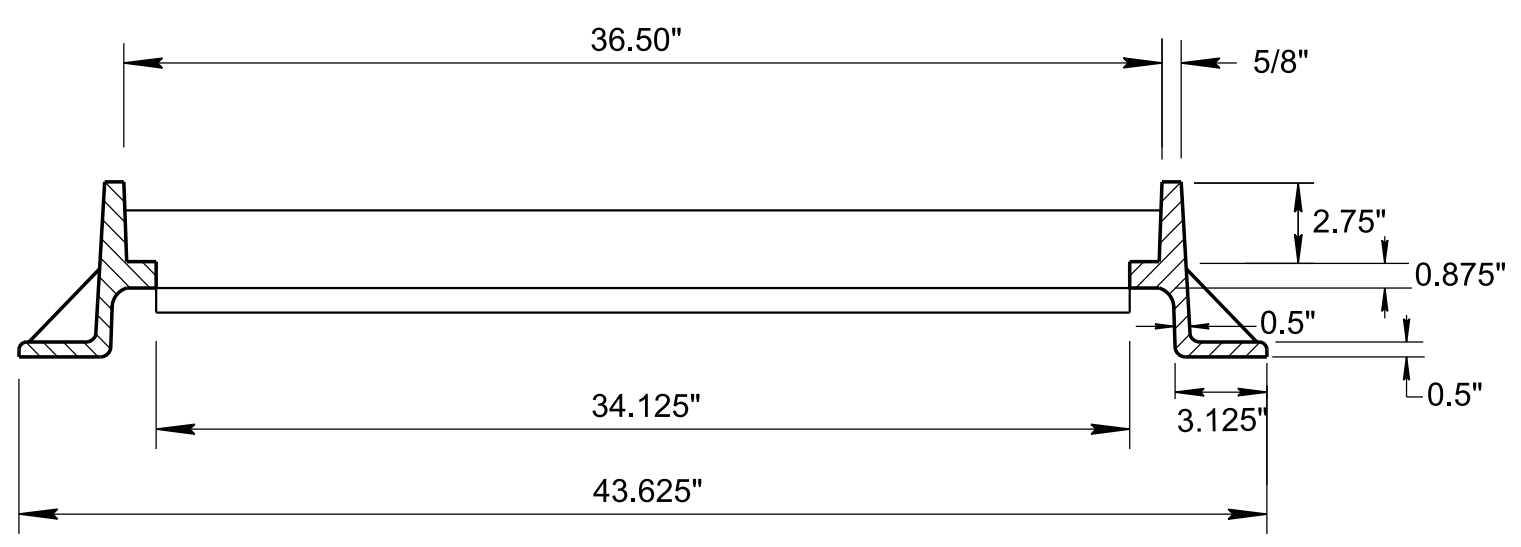
ISOMETRIC VIEW



CURB HOOD DIMENSION

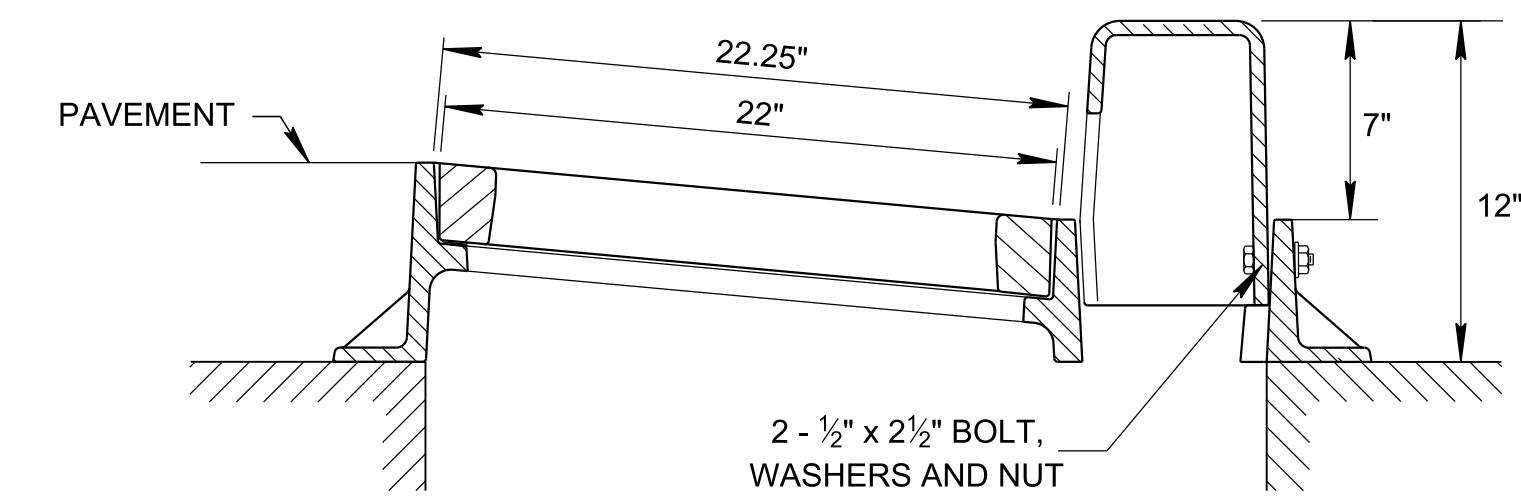


GRATE DIMENSION

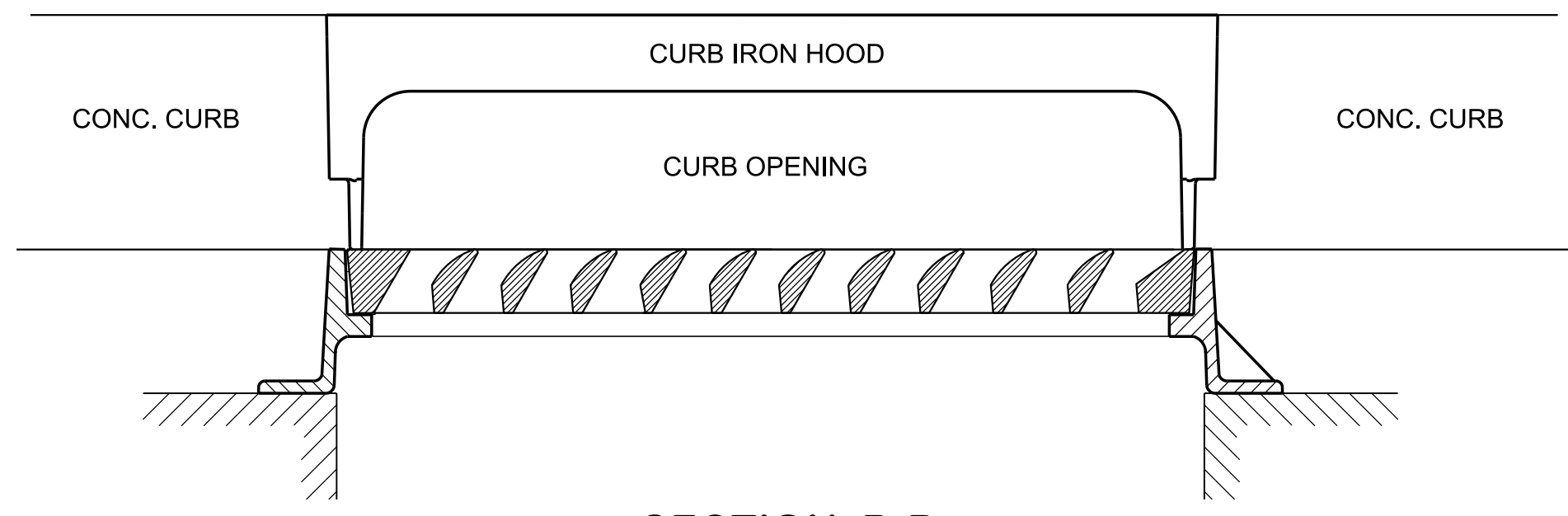


FRAME DIMENSION

FRONT VIEWS



SECTION A-A



SECTION B-B

WEIGHTS FOR SINGLE GRATE CATCH BASIN	
FRAME -----	APPROX. 272 LBS.
GRATE -----	APPROX. 245 LBS.
CURB BOX -----	APPROX. 144 LBS.
TOTAL ----- APPROX. 661 LBS.	
CAST GRAY IRON ASTM-48 CLASS 35B H-20/HS-20 LOAD RATING	

GENERAL NOTES

- (A) WHEN A SIX (6) INCH VERTICAL CURB IS REQUIRED USE THIS DRAWING ON ALL VARIATIONS OF NUMBER 12, 14, 16, AND 17 CATCH BASINS CONTAINED IN THIS SECTION OF THE STANDARD DRAWINGS.
- (B) FOR CLEARNESS, ALL CORNERS ARE SHOWN ON THIS DRAWING BY STRAIGHT LINES WITH THE EXCEPTION OF THE 1" RADIUS AT THE TOP OF FACE OF CURB. ALL INSIDE CORNERS SHOULD BE MADE WITH 1/2" x 1/2" FILLETS OR 3/4" RADIUS FILLETS FOR EASE IN MOLDING.
- (C) IF CATCH BASIN IS PAID FOR UNDER EACH, THEN COST OF CAST IRON USED IN CASTINGS IS TO BE PAID FOR UNDER THE SPECIFIC ITEM BID FOR THAT CATCH BASIN. SEE STANDARD DRAWINGS FOR TYPE 12, 14, 16, AND 17 CATCH BASINS FOR APPLICABLE PAY ITEMS FOR EACH TYPE OF CATCH BASIN.
- (D) INLET FRAME, GRATE, AND CURB BOX GRAY IRON CASTINGS SHALL BE MANUFACTURED CONFIRMING TO ASTM A-48 CLASS 35B MEETING 35 KSI, AND AASHTO M306 FOR H-20/HS-20 LOAD RATING. NEENAH FOUNDRY COMPANY HAS DESIGNED THIS OTHER ALTERNATE TYPE "B" CASTINGS.
- (E) IF PAID FOR SEPARATELY, CAST IRON USED IN CASTINGS IS TO BE PAID FOR UNDER ITEM NO.

611-03.04 GRAY IRON CASTINGS (CATCHBASIN) LB.

7/6/2023 2:48:58 PM P:\StandDraw\DESIGN STANDARDS\Standards Drawings Library\Standard Roadway Drawings - CURRENT\In Progress\10-102.00 Catch Basins and Manholes IP\102.01 Catch Basins IP\DCBB12D-20230707.dgn