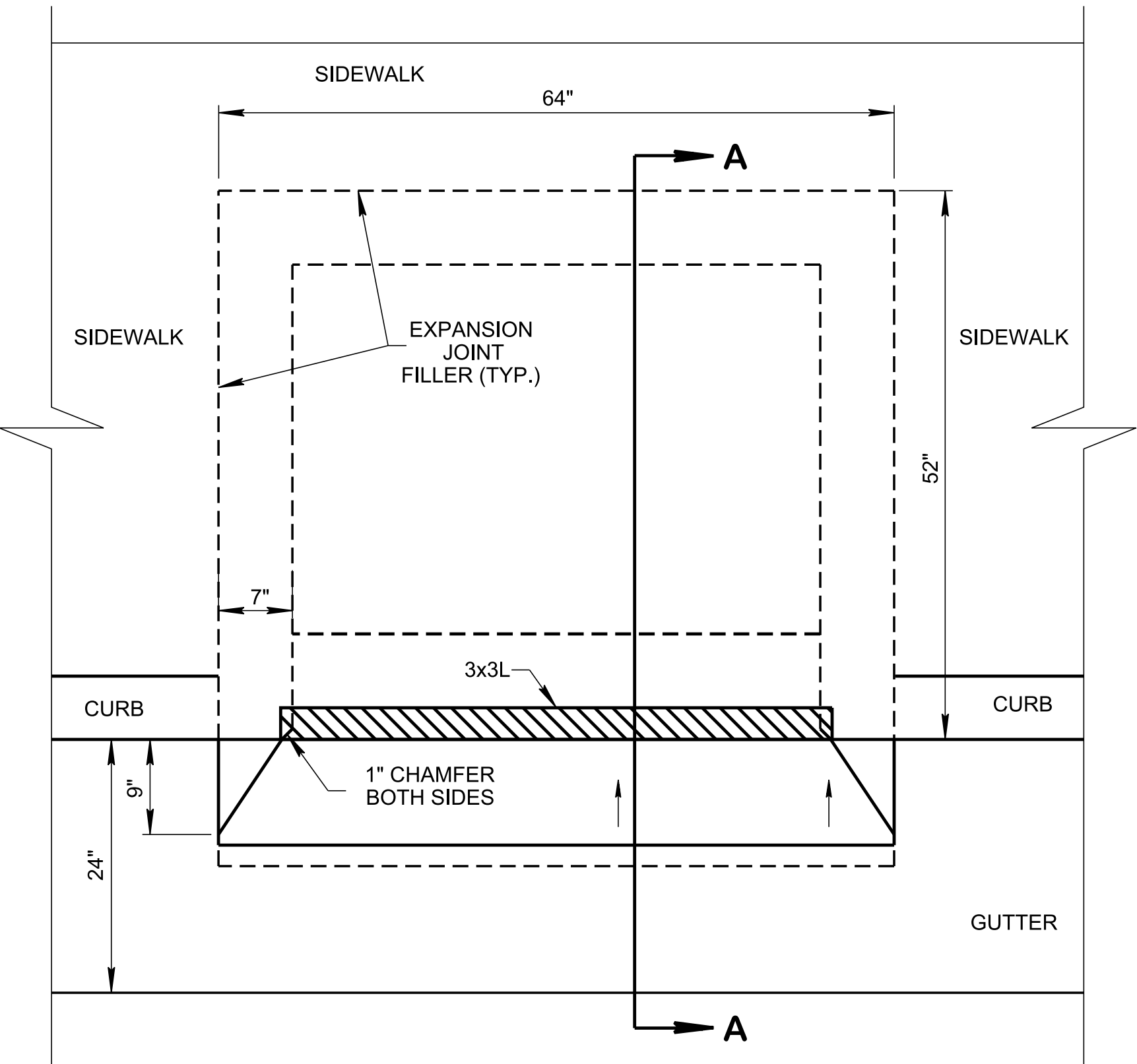
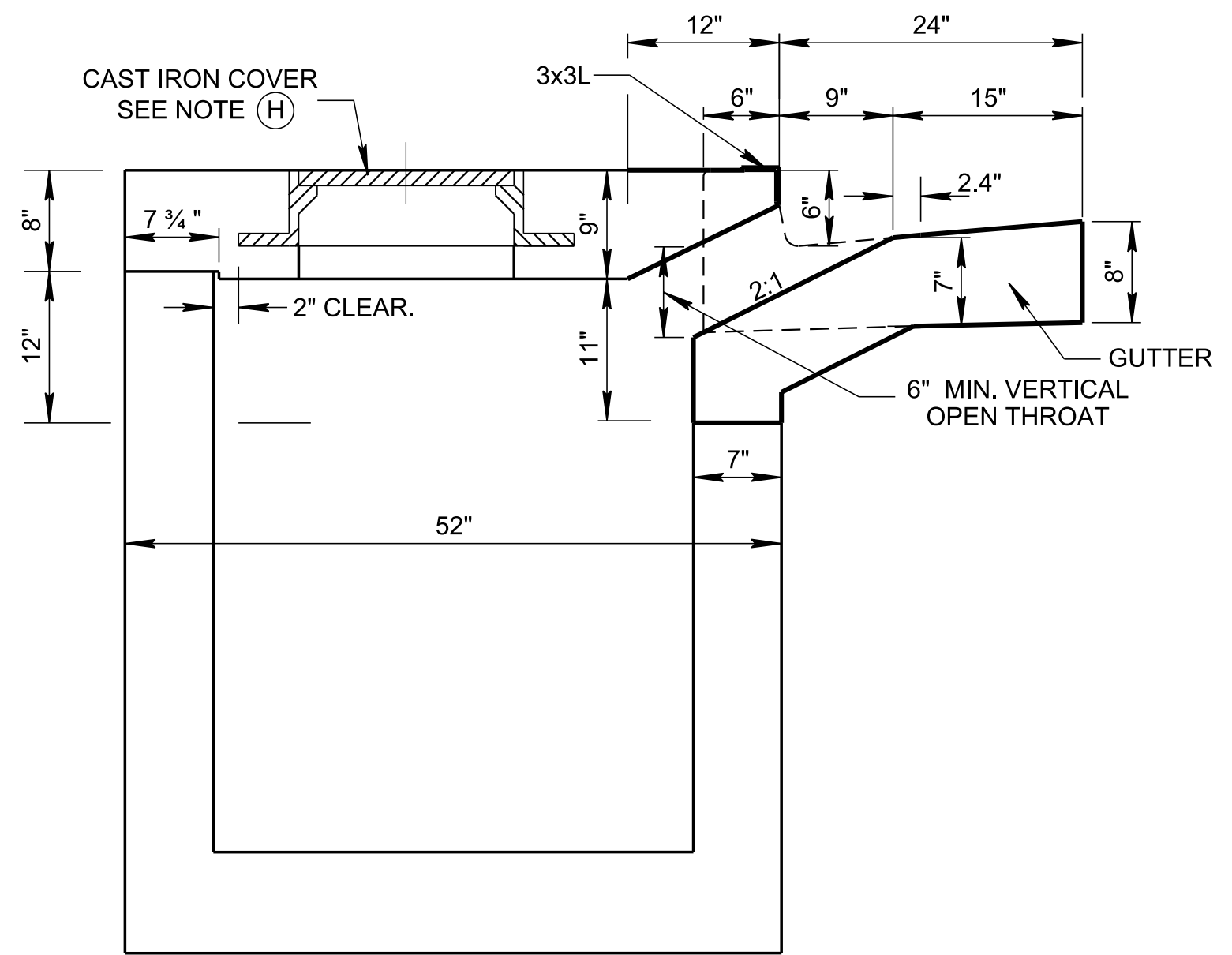


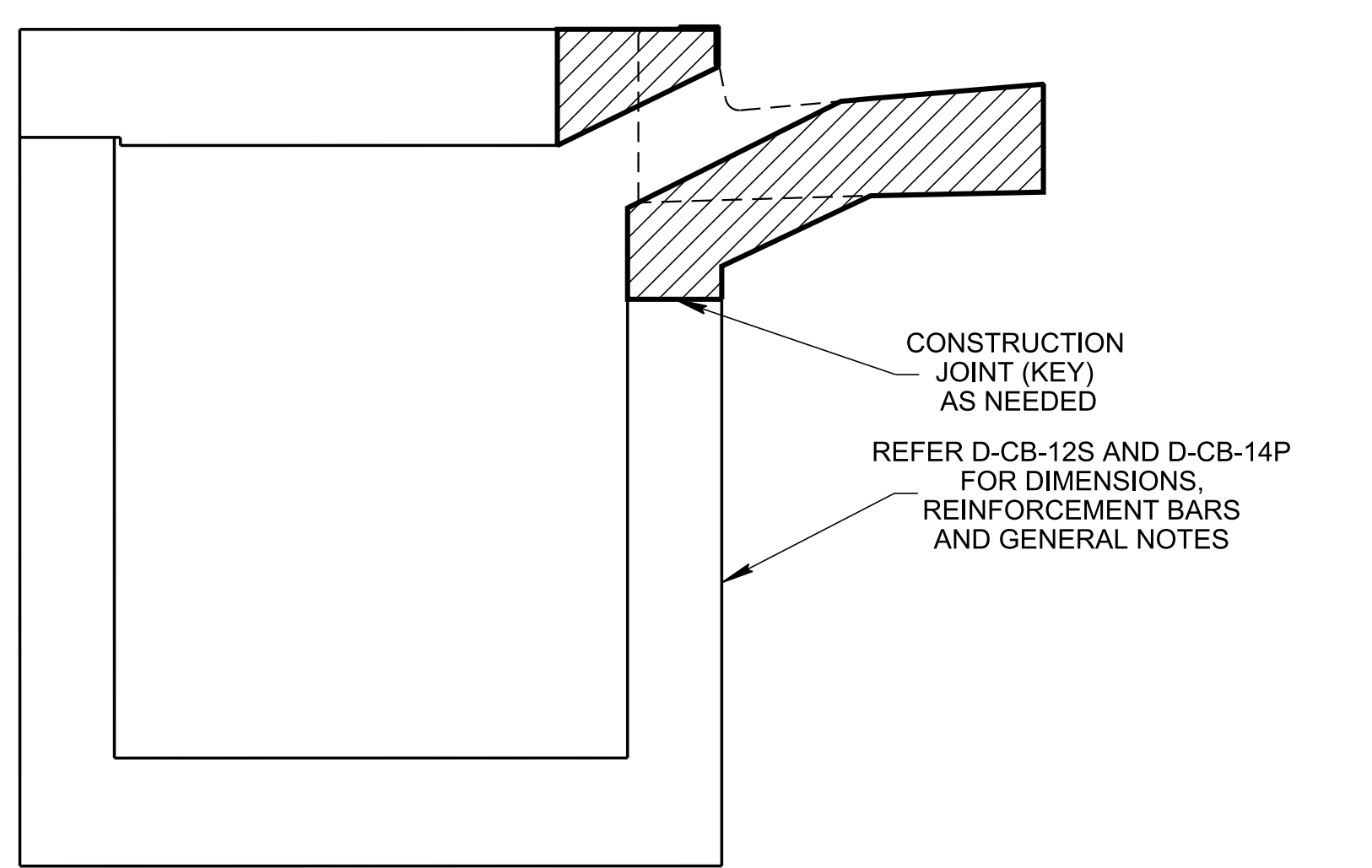
7/15/2020 9:25:07 AM P:\StandDraw\DESIGN STANDARDS\Standards Drawings Library\Standard Roadway Drawings - CURRENT\In Progress\10-102.00 Catch Basins and Manholes IP\102.01 Catch Basins IP\DCBDI20200701.DGN



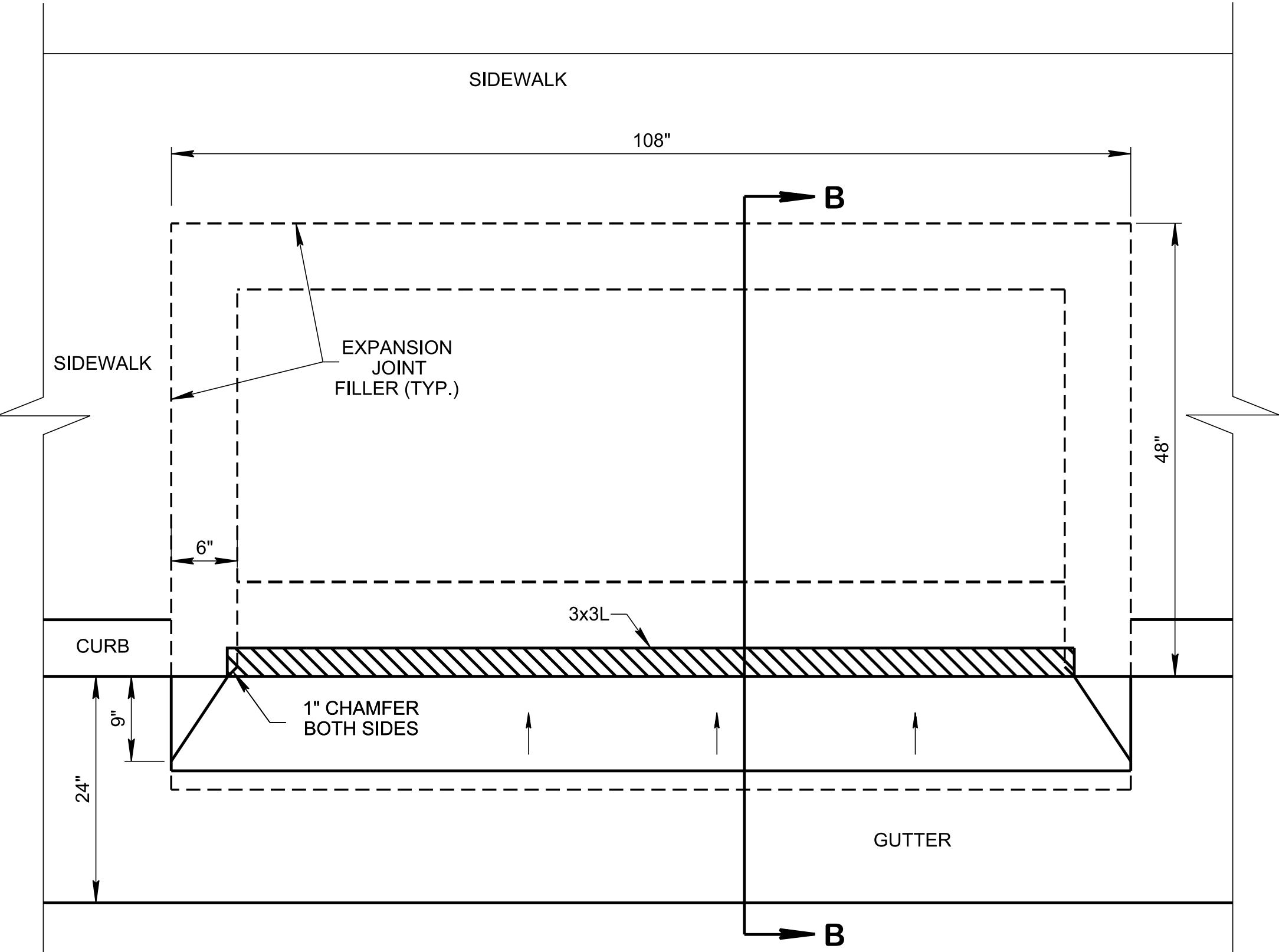
PLAN VIEW



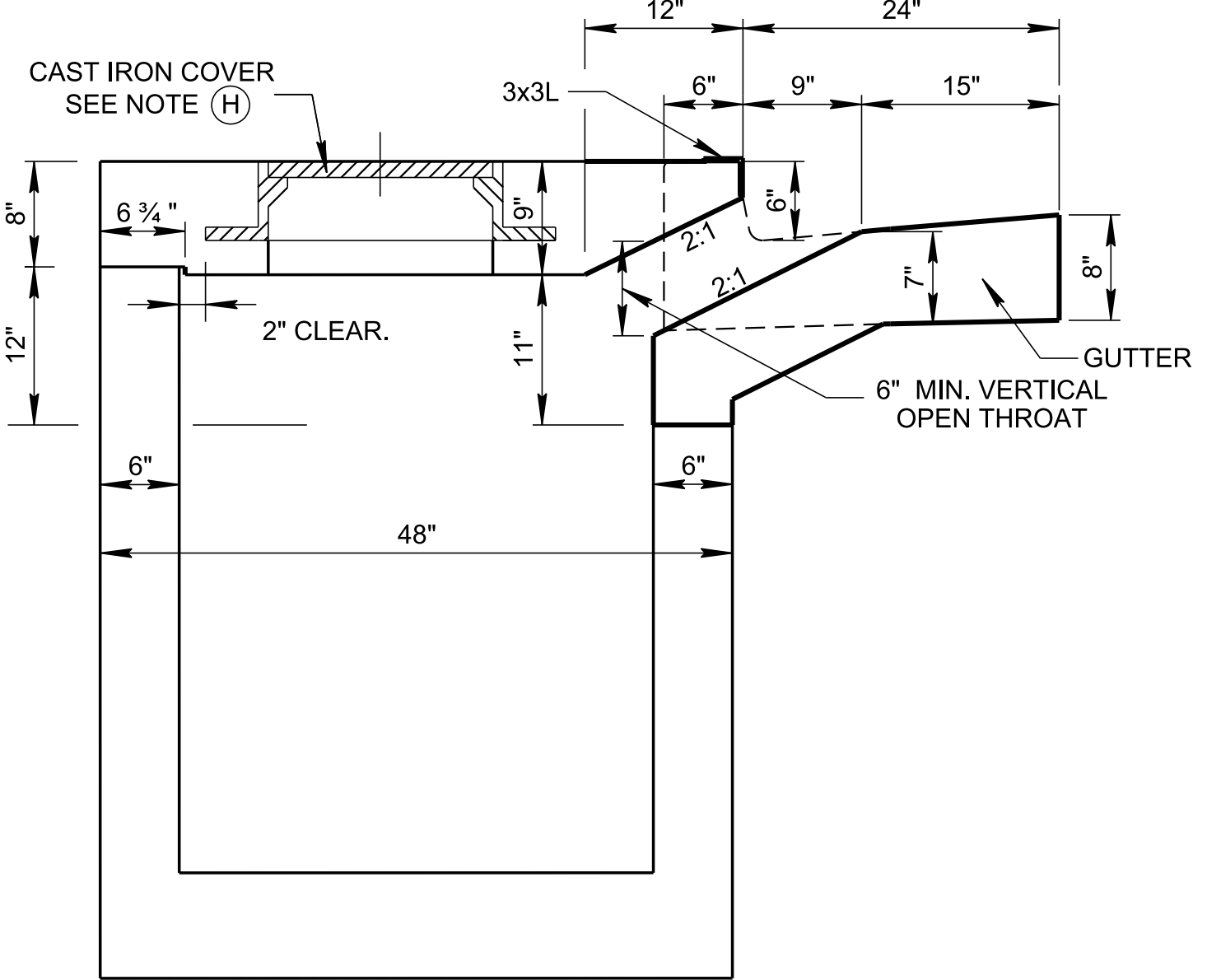
SECTION A-A
ALTERNATE D-CB-12S CURB INLET
DETAIL



TOP SLAB NOTCH DETAIL



PLAN VIEW



SECTION B-B
ALTERNATE D-CB-14P CURB INLET
DETAIL

GENERAL NOTES

- (A) THIS STANDARD DRAWING CAN BE USED AS AN ALTERNATE DESIGN FOR STANDARD DRAWINGS D-CB-12S AND D-CB-14P, ALL CONSTRUCTION AND DIMENSIONS ARE THE SAME EXCEPT THE INLET.
- (B) THE DESIGNER SHALL CONFIRM THE DRAINAGE CAPACITY.
- (C) THE FOLLOWING MATERIAL PROPERTIES ARE REQUIRED FOR BOTH CAST-IN-PLACE AND PRECAST STRUCTURES. SEE STANDARD DRAWING D-CB-12S AND D-CB-14P FOR ADDITIONAL CONSTRUCTION NOTES & DETAILS.

CONCRETE: $f'_c = 4,000$ POUNDS PER SQUARE INCH AT 28 DAYS.
REINFORCING STEEL: ASTM A615, $F_y = 60,000$ POUNDS PER SQUARE INCH.
ALL REINFORCING ARE TO BE INSTALLED AS DETAILED SHOWN ON D-CB-12S AND D-CB-14P STANDARD DRAWINGS UNLESS NOTED OTHERWISE.
- (D) ALL REINFORCEMENT IN MODIFIED TOP SLAB SHALL HAVE 2" MINIMUM COVER UNLESS OTHERWISE SHOWN. INLET TOP SLAB SHALL BE EITHER CAST-IN-PLACE OR PRECAST CONCRETE.
- (E) PLACE 1 INCH PREMOLDED EXPANSION JOINT FILLER ADJACENT TO SIDEWALK.
- (F) THESE INLETS ARE DESIGNED FOR USE WITH STANDARD DRAWING RP-VC-10 CONCRETE CURB AND GUTTER 6-30 TYPE.
- (G) ALL CATCH BASINS ARE PLACED BASED ON FINISHED GRATE ELEVATION, BUT ALTERNATE CATCH BASIN DROP INLET (D-CB-DI) WILL BE 6" HIGHER THAN THE OTHER TYPICAL CATCH BASINS.
- (H) OPTIONAL MANHOLE COVER, IF USED SEE STANDARD DRAWING D-MH-4 FOR DETAILS REGARDING CAST IRON COVERS, FRAMES AND DETAILS FOR THE VARIOUS STEPS.
- (I) PAY DEPTH MEASUREMENT MADE FROM TOP OF GRATE TO OUTLET FLOW ELEVATION. ALL COST TO BUILD THE STRUCTURE AND FIELD MODIFICATIONS TO CURB AND GUTTER SHALL BE COMPENSATED UNDER ITEM NUMBERS:

611-12.01, CATCH BASINS, TYPE 12, 0'-4" DEPTH, EACH.,
611-14.01, CATCH BASINS, TYPE 14, 0'-4" DEPTH, EACH.

STATE OF TENNESSEE
STANDARD
DRAWING
DEPARTMENT OF TRANSPORTATION

**ALTERNATE
CATCH BASIN
DROP INLET
DETAILS**