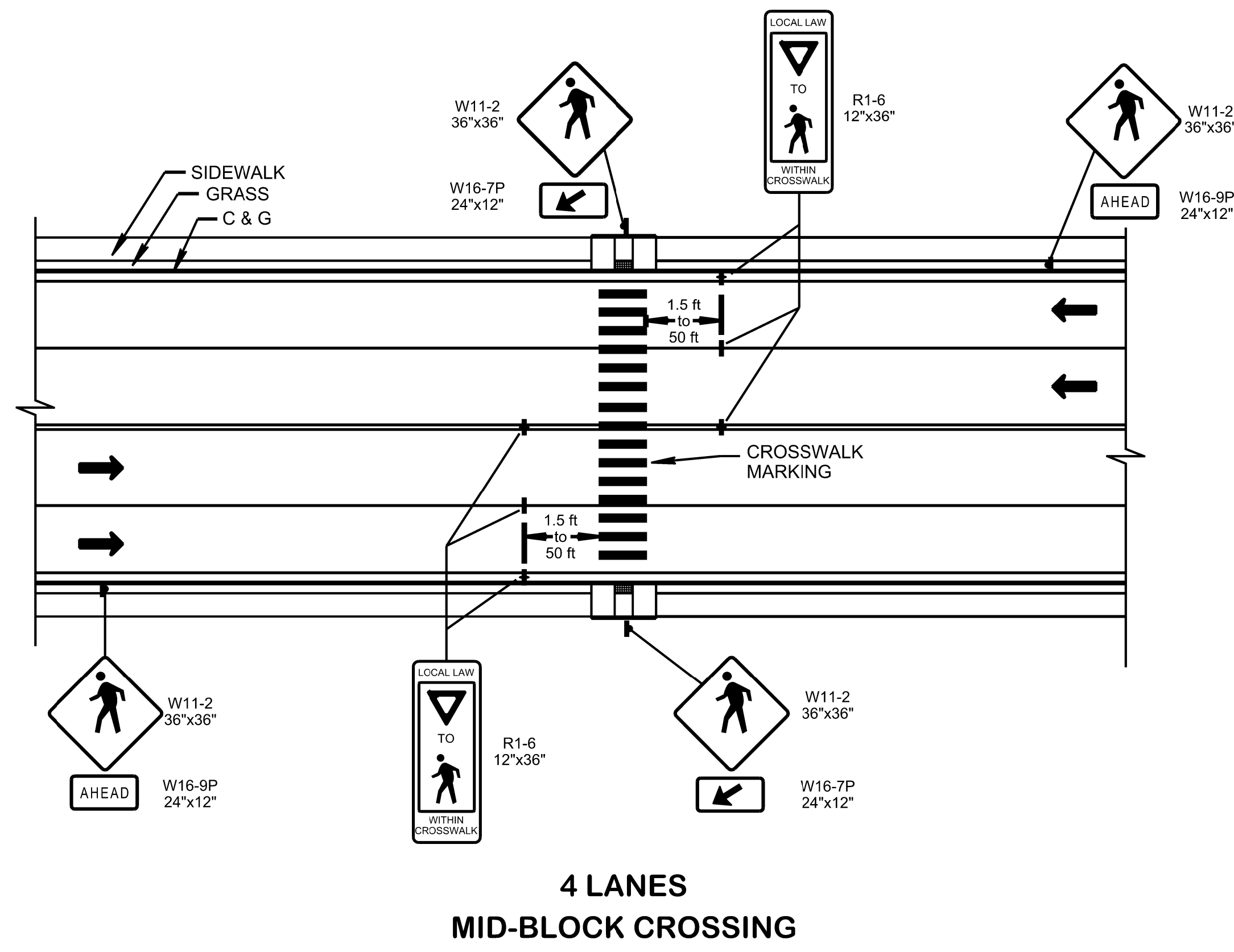
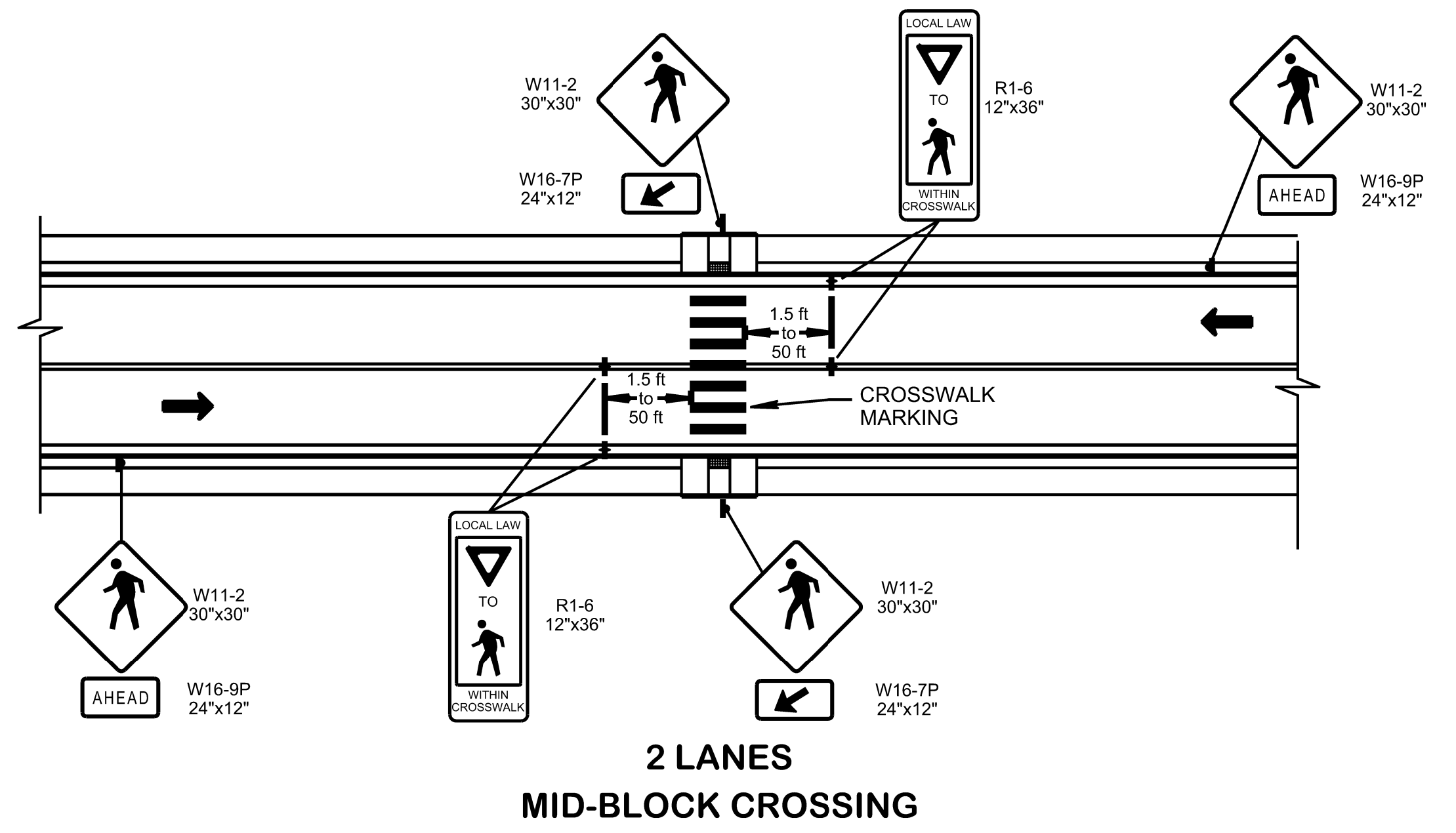


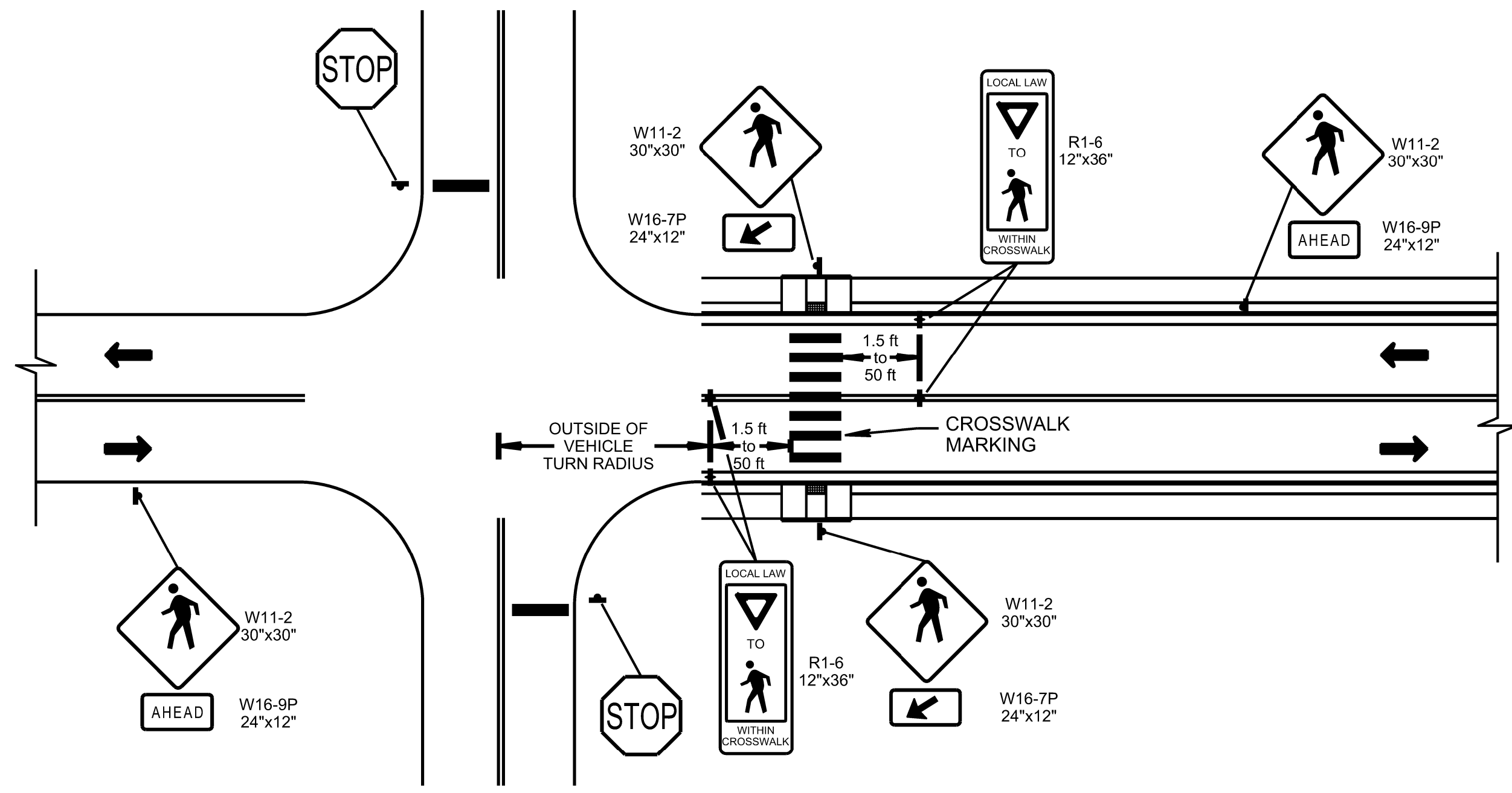
5/17/2022 10:14:15 AM P:\StandDraw\DESIGN STANDARDS\Drawings Library\Standard Roadway Drawings - CURRENT\10-105.00 Multimodal --\105.05 Typical Section\Edits\Pedestrian Gateway\T-M-4C Pedestrian Gateway.dwg



**4 LANES  
MID-BLOCK CROSSING**



**2 LANES  
MID-BLOCK CROSSING**



**UNSIGNALIZED INTERSECTION**

LEGEND	
	SIGN SUPPORT
	DETECTABLE WARNING SURFACE
	IN-STREET SIGN POSTS

GENERAL NOTES			
(A)	DETAILS SHOWN ON THIS STANDARD DRAWING APPLY TO THE CONSTRUCTION OR RECONSTRUCTION OF UNSIGNALIZED CROSSINGS AND MODIFICATION OF STREETS, CURBS, OR SIDEWALKS ASSOCIATED WITH IT. SEE TDOT-RDG FOR ADDITIONAL INFORMATION FOR SITE SELECTION, NEW CONSTRUCTION OR RECONSTRUCTION DURING PEDESTRIAN SAFETY INITIATIVE, SPOT SAFETY IMPROVEMENTS APPLIED AT URBAN LOW SPEED UNSIGNALIZED INTERSECTION AT MAX. 35 MPH. OTHER LOCATIONS WILL NEED SITE SPECIFIC ANALYSIS.		
(B)	IN-STREET PEDESTRIAN CROSSING SIGN (R1-6) SHALL BE PLACED ON PAVEMENT MARKING OR EDGE OF GUTTER PAN AND EACH END OF THE CROSSWALK LOCATION. THE SIGNS SHALL BE PLACED 1.5 FT TO 50 FT IN ADVANCE OF THE CROSSWALK ADJACENT TO THE TRAVEL LANE AND FACING THE DRIVER. REFER TO THE MUTCD ADDITIONAL FOR WARNING SIGNS, TYPE AND LOCATION.		
(C)	ADDITIONAL COUNTERMEASURES FOR IMPROVING PEDESTRIAN SAFETY SUCH AS RAISED CROSSWALKS, RAPID RECTANGULAR FLASHING BEACONS (RRFB), AND CURB EXTENTIONS MAY BE USED (OPTIONAL).		
(D)	REFER TO T-M-4 SERIES FOR SIGN SPACING, CROSSWALK MARKING, AND UNSIGNALIZED MID-BLOCK CROSSING DETAILS		
PAYMENT			
	716-02.03	PLASTIC PAVEMENT MARKING (CROSS-WALK),	PER L.F.,
	713-15.40,	SIGN INSTALLATION (DESCRIPTION),	PER LS,

STATE OF TENNESSEE  
STANDARD DRAWING  
DEPARTMENT OF TRANSPORTATION

PEDESTRIAN GATEWAY TREATMENT

05-01-2022 T-M-4C

NOT TO SCALE