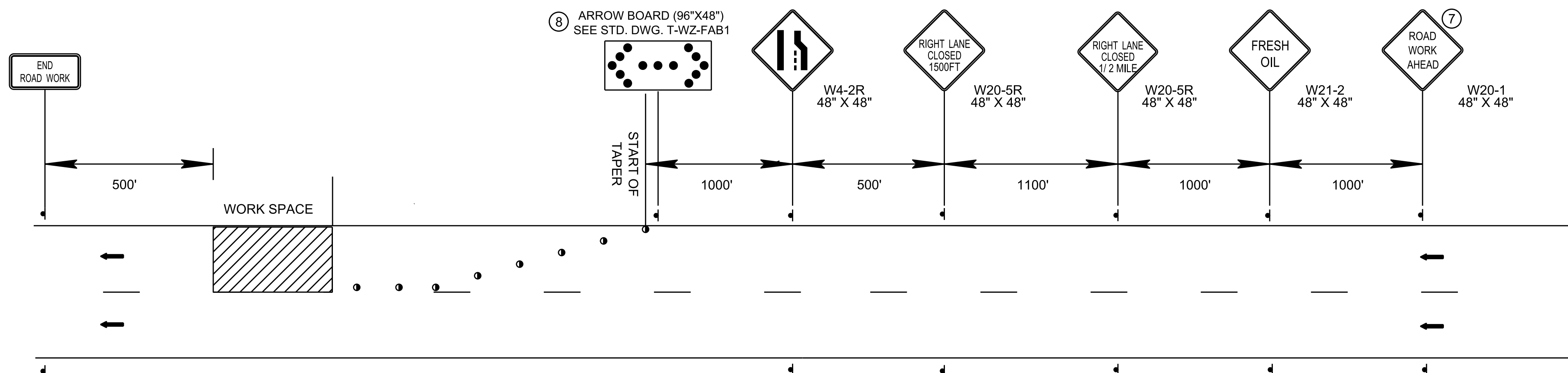
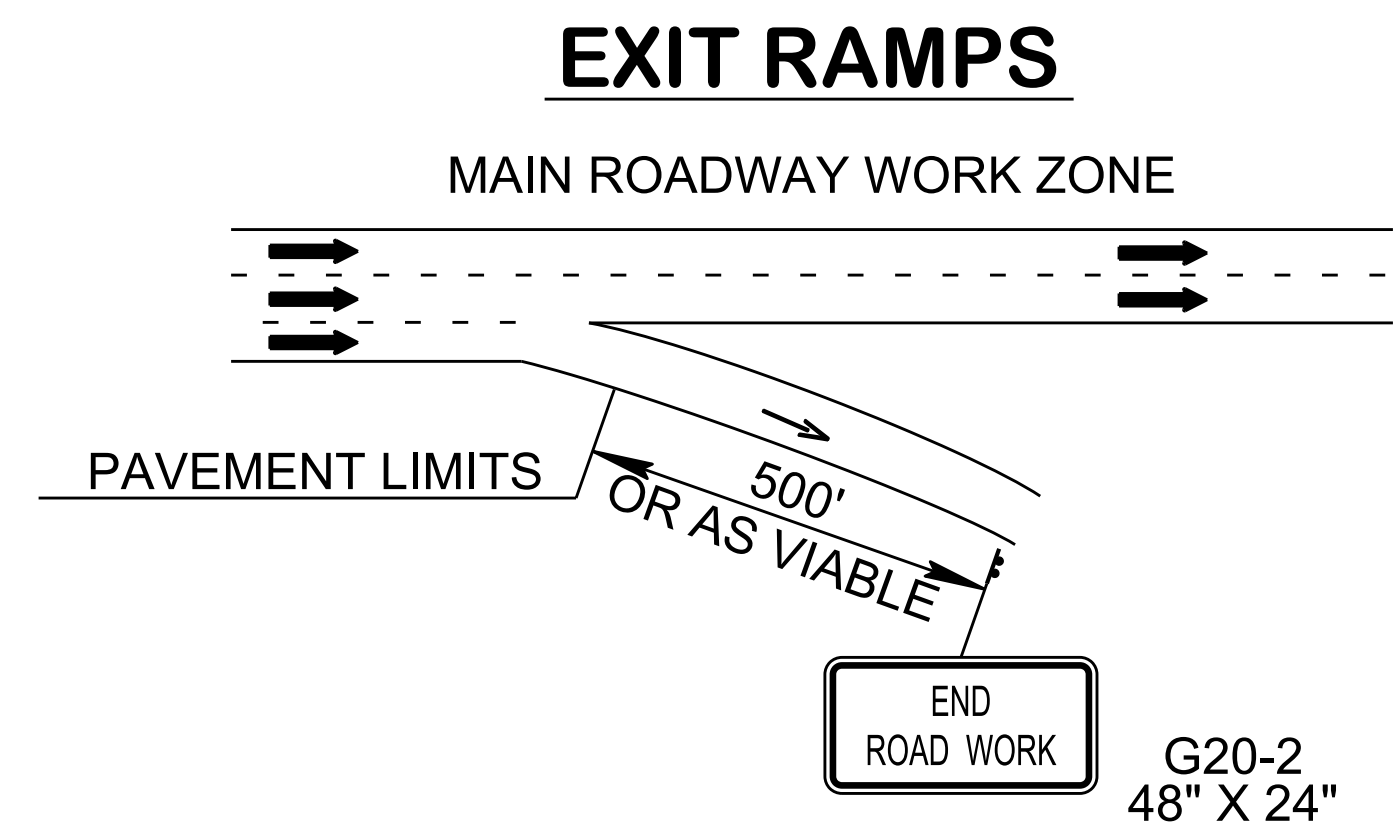
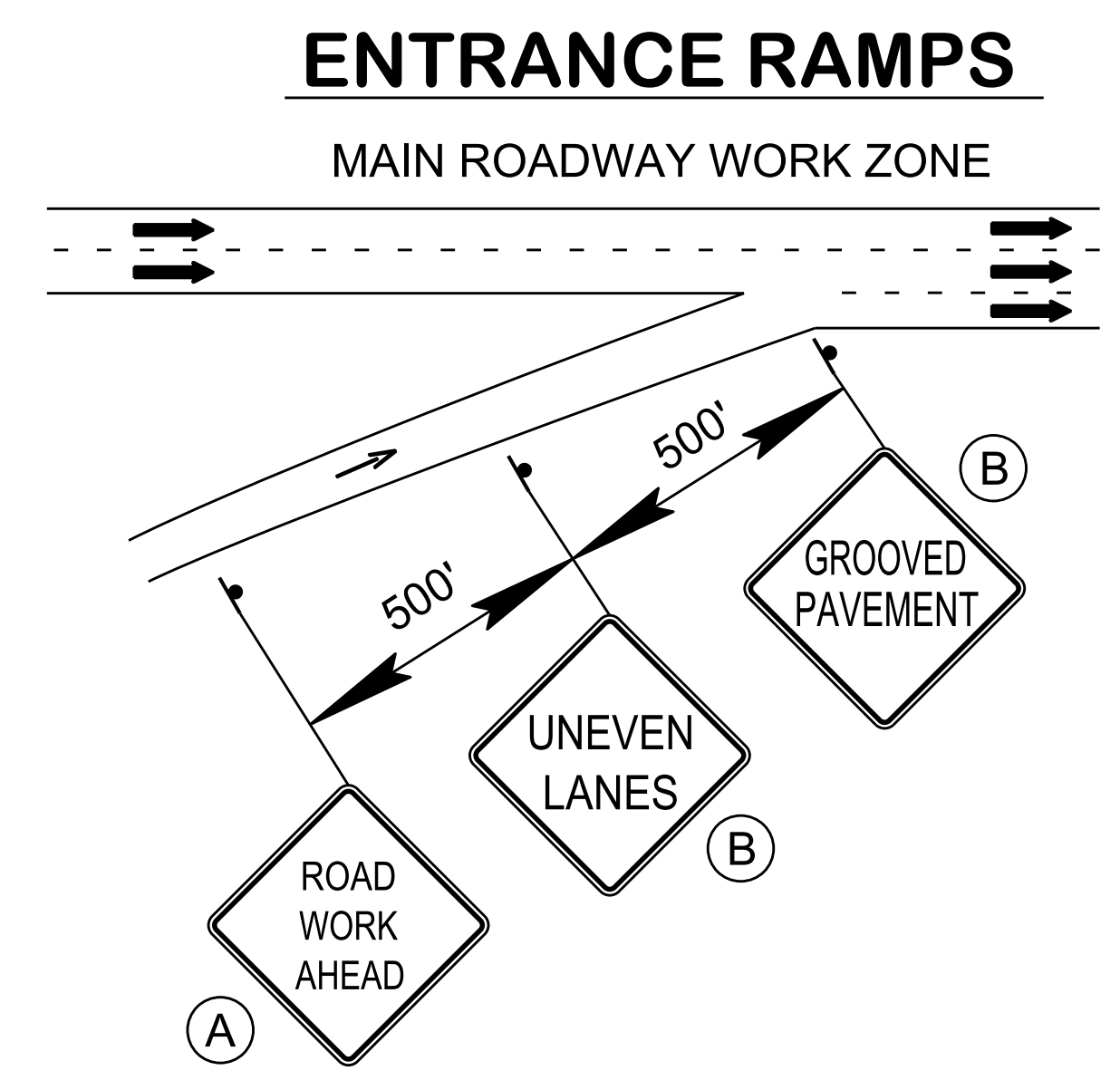


**ADVANCED WARNING SIGNING LAYOUT  
(INSTALLED FOR DURATION OF PROJECT)**



**TRAFFIC CONTROL FOR ONE LANE CLOSURE ON MULTI-LANE DIVIDED HIGHWAY (A)  
(TO BE USED DURING ACTIVE WORK AND LANE CLOSURES)**



**DESIGN NOTES**

- ① SHOULD BE PLACED APPROX. 2 MILES IN ADVANCE OF THE START OF PROJECT LIMITS AND SHALL REFLECT THE DISTANCE FROM THIS SIGN LOCATION UNTIL THE TERMINUS OF THE PAVING LIMITS. DISTANCE SHOWN SHOULD BE ROUNDED OFF TO THE NEAREST MILE.
- ② SHOULD BE INSTALLED AT SUITABLE LOCATION AFTER PREVIOUS SIGN.
- ③ ADDITIONAL DISTANCE TO ALLOW FOR PROPER TAPER AND BUFFER TO BE PROVIDED AHEAD OF PAVING LIMITS.
- ④ SHALL BE COVERED UNTIL CONDITIONS WARRANT - ALSO TO BE PLACED AT 1 MI INCREMENTS THROUGH PROJECT
- ⑤ ONLY TO BE USED WHEN MORE THAN A 2.75 INCH DROP-OFF
- ⑥ SUBSEQUENT SPEED LIMIT SIGNS SHOULD BE POSTED AFTER EACH ENTRANCE RAMP AND PLACED AT INTERVALS THROUGHOUT THE PROJECT LIMITS AT DISTANCES NO GREATER THAN 2 MILES APART.
- ⑦ PLACE 1MI IN ADVANCE OF START OF TAPER. SIGN MAY NOT BE REQUIRED WHEN LANE CLOSURE OCCURS AT START OF PROJECT LIMITS DUE TO PREVIOUSLY INSTALLED ADVANCED WARNING SIGNAGE.
- ⑧ ARROW BOARDS REQUIRED FOR ALL LANE CLOSURES.
- ⑨ FOR FREEWAYS WITH MORE THAN 2 LANES IN ONE DIRECTION, DIFFERENT TRAFFIC CONTROL LAYOUTS MAY BE REQUIRED CONSULT T-WZ SERIES FOR ALTERNATES.

**GENERAL NOTES**

- (A) PLACED AT OR NEAR BEGINNING OF ENTRANCE RAMP
- (B) SIGNS CONCERNING CONDITION OF ROADWAY SHALL REMAIN COVERED UNTIL CONDITIONS WARRANT
- (C) SIGNS TO BE PAID 712-06 SIGNS (CONSTRUCTION) (SF) EXCEPT FOR TN-44 "WORKERS PRESENT" SIGN WHICH IS PAID 712-06.16 SIGNS (CONSTRUCTION) (REDUCED SPEED WARNING), EA