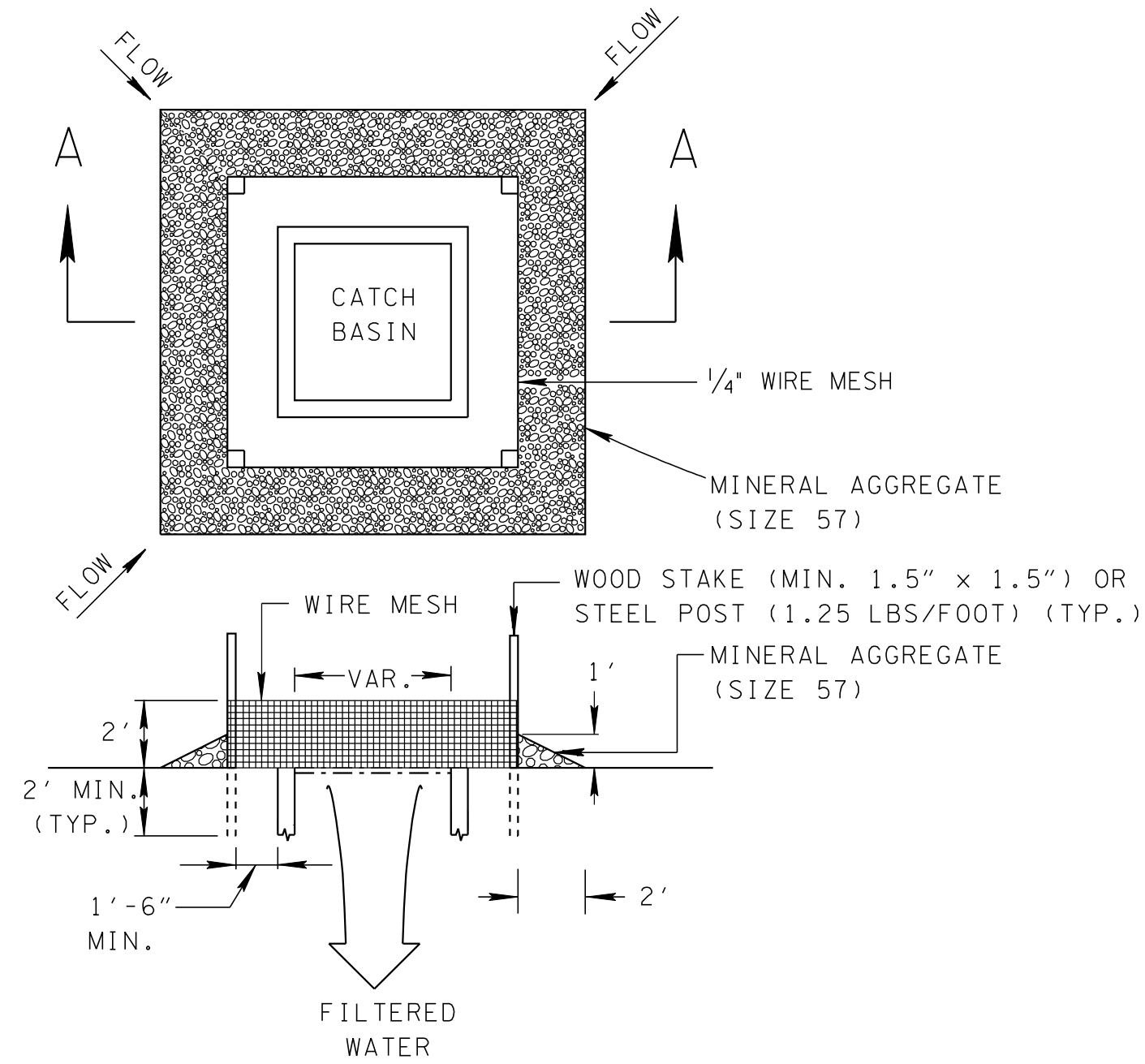


- REV. 12-18-95: CHANGED DRAWING NO. FROM ESC-STR-19 TO EC-STR-19.
- REV. 5-27-01: CHANGED ITEM NO. 303-15.01 TO 303-10.01.
- REV. 12-18-02: IN CATCH BASIN SILT FENCE SILT TRAP CHANGED TYPE OF SILT FENCE FROM SILT FENCE (WITHOUT BACKING) TO SILT FENCE (WITH BACKING) AND PAY ITEM FROM 209-08 TO 209-08.02.
- REV. 3-15-04: CHANGED LEGENDS FOR TEMPORARY ROCK AND SILT FENCE CATCH BASIN PROTECTION.
- REV. 4-15-06: REFORMATTED SHEET, REVISED NOTES, MISC. EDITS TO DRAWING.
- REV. 4-1-08: REPLACED HAY BALE SILT TRAP, REVISED GENERAL NOTES, AND MISC. EDITS TO DRAWING.

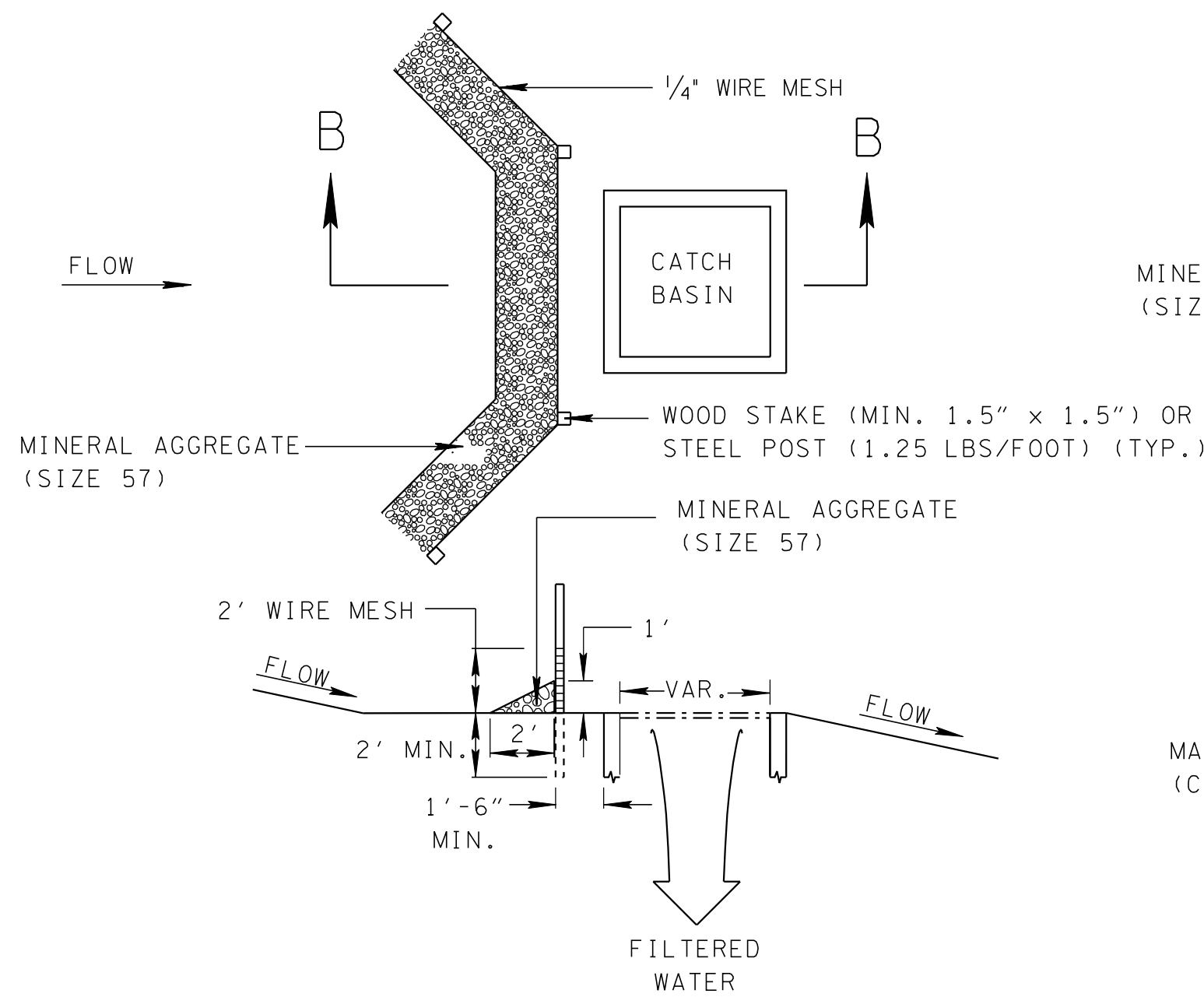
**CATCH BASIN PROTECTION (TYPE B)**



SECTION A-A

EROSION CONTROL PLAN LEGEND:   (B) CATCH BASIN PROTECTION (TYPE B)

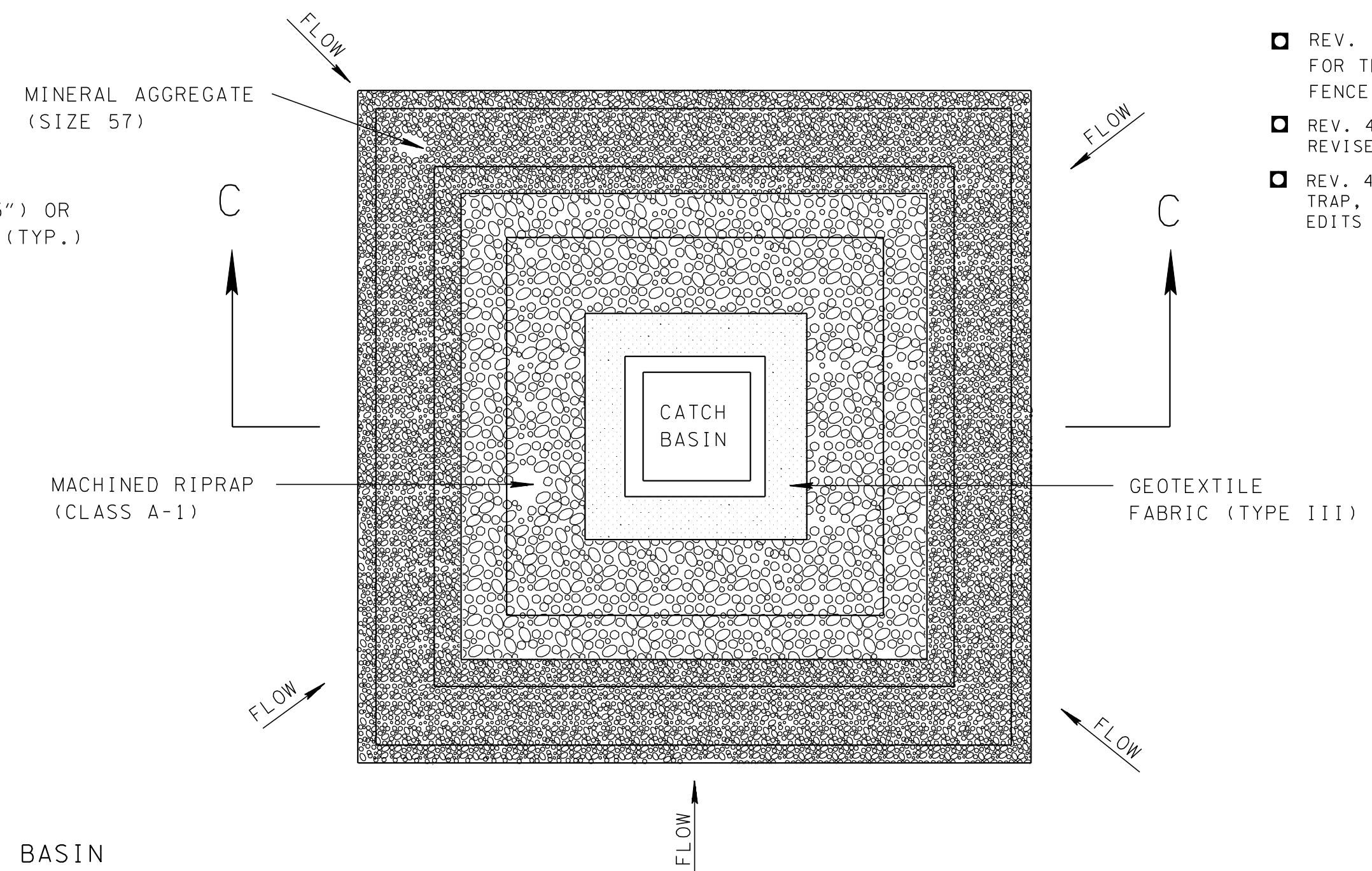
**CATCH BASIN PROTECTION (TYPE C)**



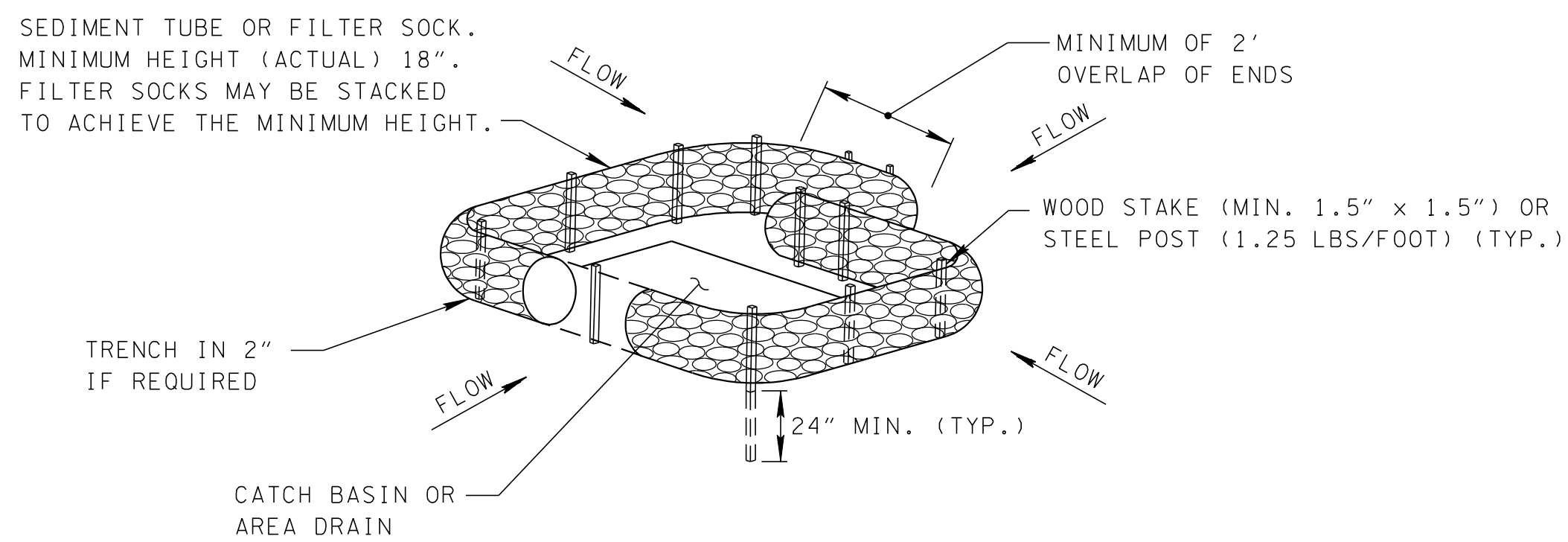
SECTION B-B

EROSION CONTROL PLAN LEGEND:   (C) CATCH BASIN PROTECTION (TYPE C)

**CATCH BASIN PROTECTION (TYPE A)**

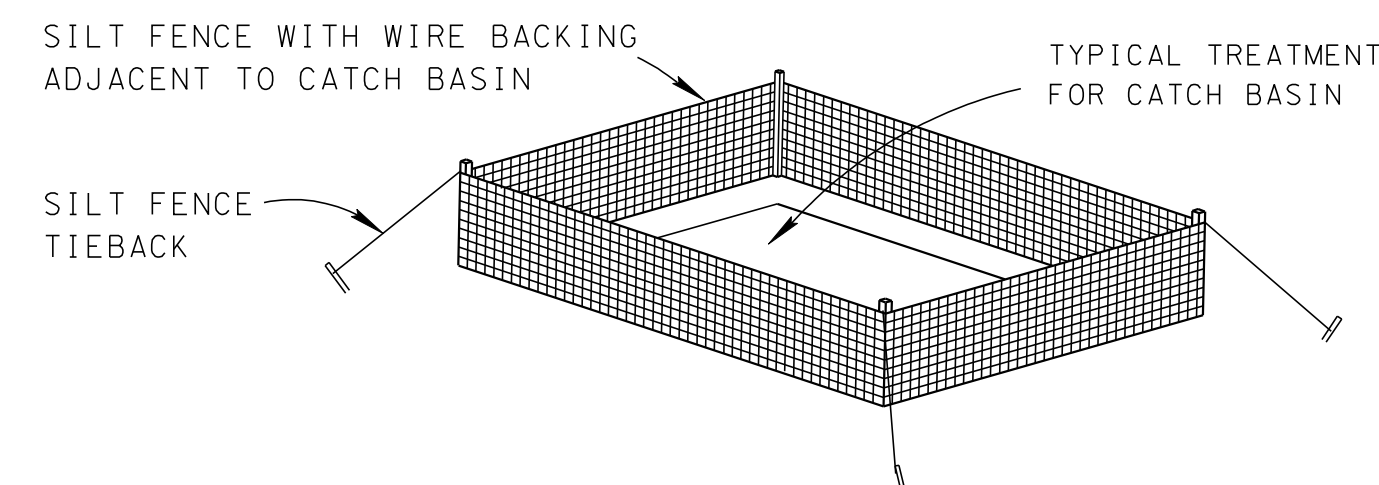


**CATCH BASIN PROTECTION (TYPE D)**

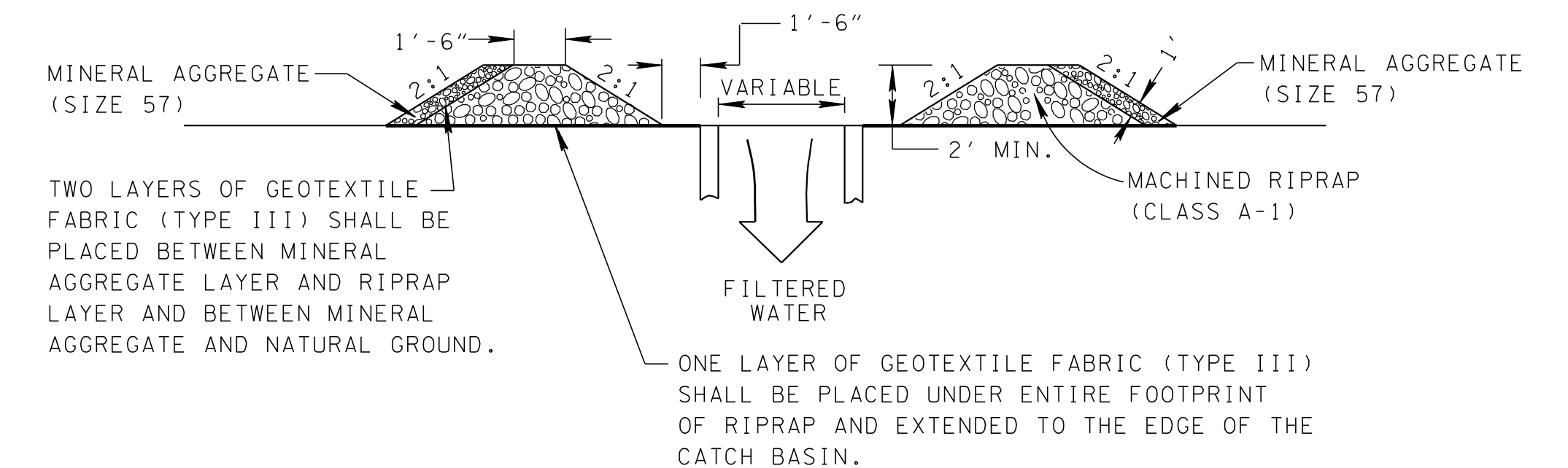


EROSION CONTROL PLAN LEGEND:   (D) CATCH BASIN PROTECTION (TYPE D)

**CATCH BASIN PROTECTION (TYPE E)**



EROSION CONTROL PLAN LEGEND:   (E) CATCH BASIN PROTECTION (TYPE E)



SECTION C-C

EROSION CONTROL PLAN LEGEND:   (A) CATCH BASIN PROTECTION (TYPE A)

**CATCH BASIN PROTECTION GENERAL NOTES**

- |   |  |           |  |           |  |           |  |           |  |           |  |
|---|--|-----------|--|-----------|--|-----------|--|-----------|--|-----------|--|
| <p>(A) CATCH BASIN PROTECTION IS USED TO PREVENT SEDIMENT IN CONSTRUCTION SITE RUNOFF FROM ENTERING A STORM SEWER SYSTEM.</p> <p>(B) TYPE B, TYPE C, TYPE D (SEDIMENT TUBE), AND TYPE E SHOULD ONLY BE USED IN UNPAVED AREAS. TYPE A AND TYPE D (FILTER SOCK) MAY BE USED IN BOTH UNPAVED AND PAVED AREAS.</p> <p>(C) TYPE B, TYPE C, TYPE D, AND TYPE E HAVE A MAXIMUM DRAINAGE AREA OF 1 ACRE. TYPE A HAS A MAXIMUM DRAINAGE AREA OF 2 ACRES.</p> <p>(D) ONLY GEOTEXTILE FABRIC (TYPE III) LISTED ON THE QUALIFIED PRODUCTS LIST SHALL BE USED.</p> <p>(E) THE WIRE MESH USED IN TYPE B AND TYPE C SHALL BE A MINIMUM 19 GAGE HARDWARE CLOTH WITH 1/4 INCH MESH OPENINGS.</p> <p>(F) FOR INSTALLATION DETAILS FOR SILT FENCE WITH WIRE BACKING (EC-STR-3C), FILTER SOCK (EC-STR-8), AND SEDIMENT TUBE (EC-STR-37) REFER TO THEIR RESPECTIVE STANDARD DRAWING. FILTER SOCKS MAY NOT REQUIRE STAKING WHEN APPROVED BY THE ENGINEER.</p> | <p>(G) ANY PRODUCT LISTED ON THE QUALIFIED PRODUCTS LIST AS AN APPROVED ALTERNATE IS ALSO ACCEPTABLE.</p> <p>(H) CATCH BASIN PROTECTION SHALL BE PAID FOR UNDER THE FOLLOWING ITEM NUMBERS:</p> <table style="width: 100%; border: none;"> <tr> <td style="width: 20%;">209-40.30</td> <td>CATCH BASIN PROTECTION (TYPE A) PER EACH</td> </tr> <tr> <td>209-40.31</td> <td>CATCH BASIN PROTECTION (TYPE B) PER EACH</td> </tr> <tr> <td>209-40.32</td> <td>CATCH BASIN PROTECTION (TYPE C) PER EACH</td> </tr> <tr> <td>209-40.33</td> <td>CATCH BASIN PROTECTION (TYPE D) PER EACH</td> </tr> <tr> <td>209-40.34</td> <td>CATCH BASIN PROTECTION (TYPE E) PER EACH</td> </tr> </table> <p>PAYMENT SHALL INCLUDE ALL MATERIALS AND LABOR NECESSARY FOR CONSTRUCTION, MAINTENANCE, AND REMOVAL OF CATCH BASIN PROTECTION.</p> <p>(I) SEDIMENT SHALL BE REMOVED FROM BEHIND THE CATCH BASIN PROTECTION WHEN IT HAS ACCUMULATED TO ONE-HALF THE ORIGINAL HEIGHT OF THE STRUCTURE AND PAID FOR UNDER ITEM NUMBER 209-05, SEDIMENT REMOVAL, PER CUBIC YARD.</p> | 209-40.30 | CATCH BASIN PROTECTION (TYPE A) PER EACH | 209-40.31 | CATCH BASIN PROTECTION (TYPE B) PER EACH | 209-40.32 | CATCH BASIN PROTECTION (TYPE C) PER EACH | 209-40.33 | CATCH BASIN PROTECTION (TYPE D) PER EACH | 209-40.34 | CATCH BASIN PROTECTION (TYPE E) PER EACH |
| 209-40.30   | CATCH BASIN PROTECTION (TYPE A) PER EACH   |           |  |           |  |           |  |           |  |           |  |
| 209-40.31   | CATCH BASIN PROTECTION (TYPE B) PER EACH   |           |  |           |  |           |  |           |  |           |  |
| 209-40.32   | CATCH BASIN PROTECTION (TYPE C) PER EACH   |           |  |           |  |           |  |           |  |           |  |
| 209-40.33   | CATCH BASIN PROTECTION (TYPE D) PER EACH   |           |  |           |  |           |  |           |  |           |  |
| 209-40.34   | CATCH BASIN PROTECTION (TYPE E) PER EACH   |           |  |           |  |           |  |           |  |           |  |

MINOR REVISION -- FHWA APPROVAL NOT REQUIRED.

STATE OF TENNESSEE  
DEPARTMENT OF TRANSPORTATION

CATCH BASIN  
PROTECTION