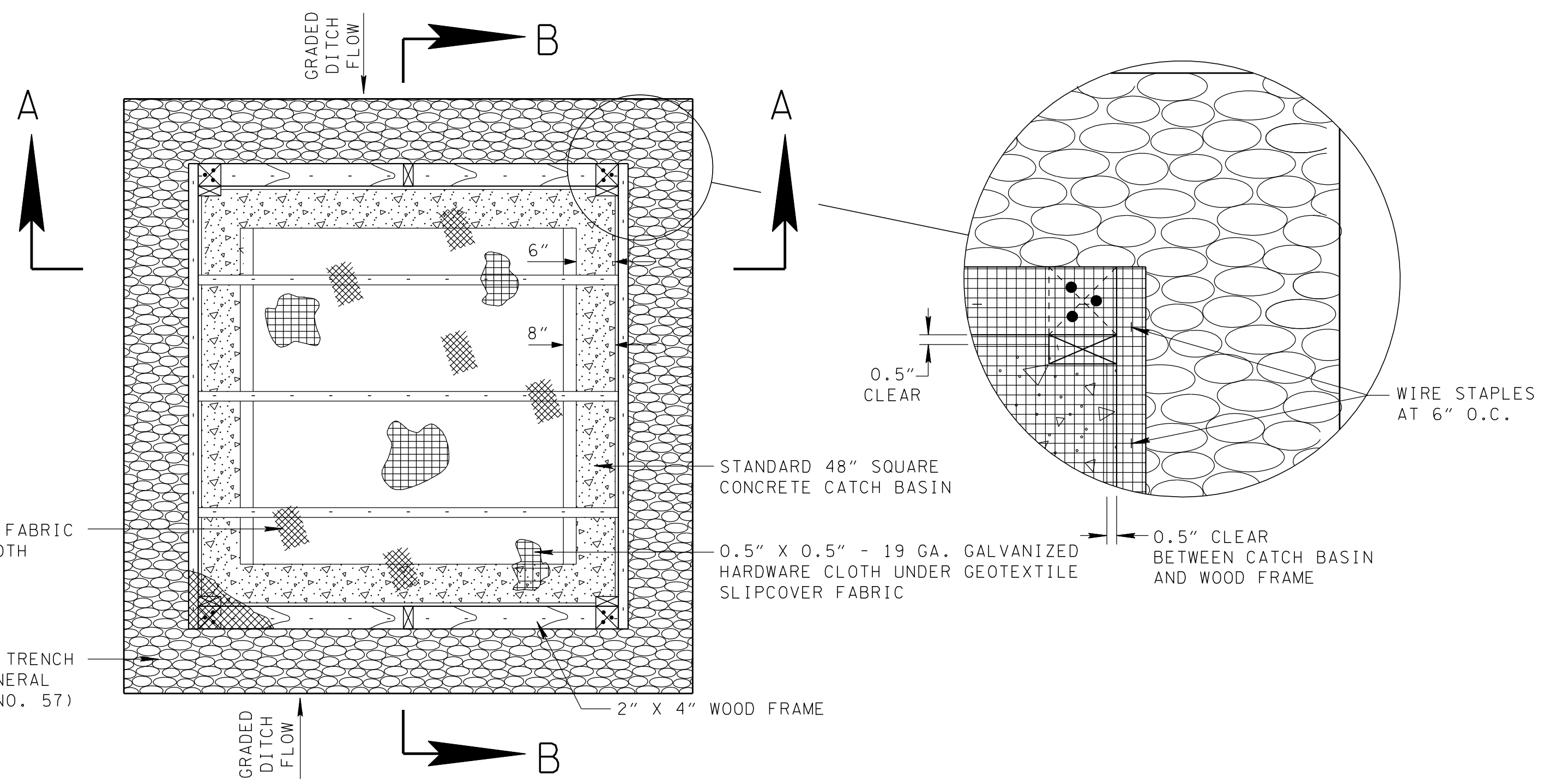


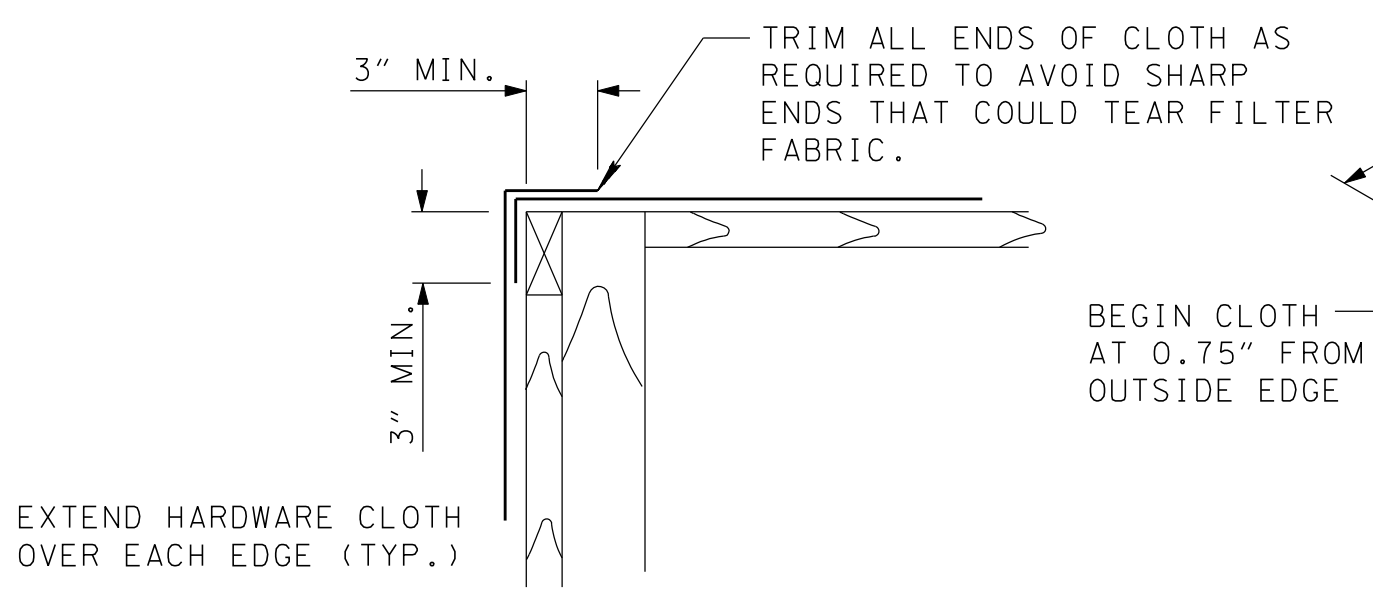
**ISOMETRIC VIEW
CATCH BASIN FILTER ASSEMBLY**
N.T.S.

EROSION CONTROL PLAN LEGEND: 2 CATCH BASIN FILTER ASSEMBLY (TYPE 2)

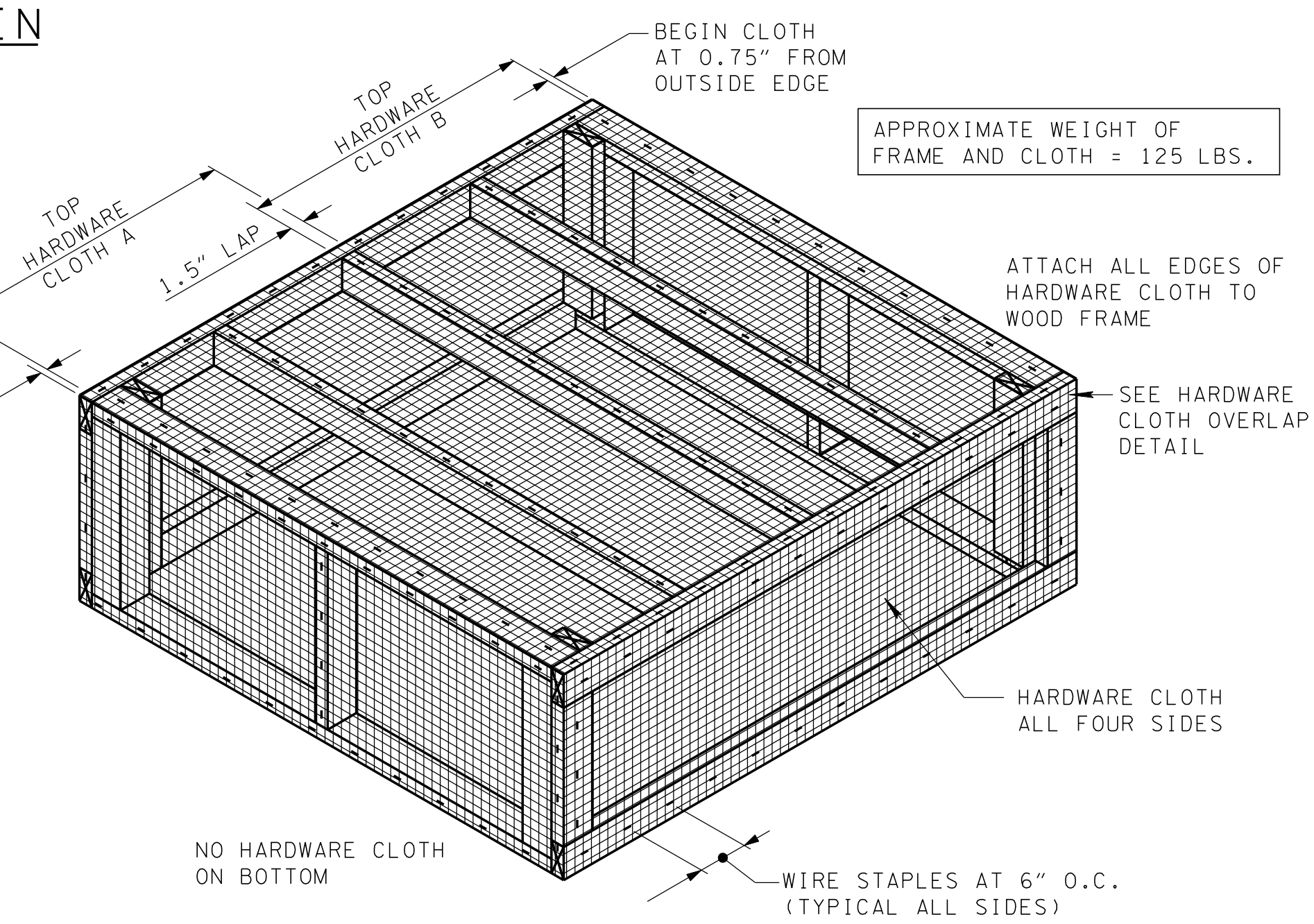


**PLAN VIEW - CATCH BASIN
FILTER ASSEMBLY**
N.T.S.

| CATCH BASIN TYPE | |
|------------------|------|
| 39S | 38SB |
| 10SB | 41SB |
| 12SB | 42SB |
| 25SB | |



**HARDWARE CLOTH
OVERLAP DETAIL**
N.T.S.



**ISOMETRIC VIEW
FRAME WITH HARDWARE CLOTH**
N.T.S.

INSTALLATION SEQUENCE FOR HARDWARE CLOTH

- INSTALL TOP HARDWARE CLOTH A. PULL MATERIAL TIGHT, LAP AND STAPLE AS SHOWN. CUT TO LENGTH AND TRIM SHARP EDGES.
- INSTALL TOP HARDWARE CLOTH B - OVERLAPPING CLOTH A AT CENTER TOP BRACE. PULL CLOTH TIGHT, LAP, AND STAPLE AS SHOWN. CUT TO LENGTH AND TRIM ALL SHARP EDGES.
- INSTALL HARDWARE CLOTH AROUND EXTERIOR OF WOOD FRAME USING ONE CONTINUOUS PIECE BEGINNING AT A CORNER, ENDING AT SAME CORNER, AND OVERLAPPING AS REQUIRED. PULL TIGHT AND STAPLE EACH SIDE BEFORE PROCEEDING WITH SUBSEQUENT SIDES.
- TRIM EXCESS ALONG BOTTOM AS NECESSARY.

CATCH BASIN FILTER ASSEMBLY GENERAL NOTES

- (A) DRAWING TO BE USED WITH STANDARD TYPE 39S AND D-CB-SERIES SB CATCH BASINS. SEE STANDARD DRAWINGS FOR CATCH BASIN DIMENSIONS AND DETAILS.
- (B) THE CATCH BASIN FILTER ASSEMBLY IS TO BE USED WHERE INTERCEPTION OF CONCENTRATED FLOWS (e.g. DITCHES AND SWALES) IS REQUIRED AFTER STRUCTURES ARE CONSTRUCTED BUT PRIOR TO ESTABLISHING VEGETATION.
- (C) 2 x 4 AND 4 x 4 PRESSURE TREATED MEMBERS SHOWN ARE NOMINAL DIMENSIONS. TYPICAL ACTUAL DIMENSIONS ARE 1.5 x 3.5 INCH AND 3.5 x 3.5 INCH RESPECTIVELY. ACTUAL DIMENSIONS OF WOOD MAY VARY EVEN GREATER DEPENDING ON MOISTURE CONTENT. ALL WOOD SHALL BE NO. 2 PRESSURE TREATED SOUTHERN YELLOW PINE.
- (D) PERIODIC MAINTENANCE AND CLEANING OF THE STRUCTURE SHALL BE PERFORMED AS NECESSARY TO PREVENT CLOGGING OF THE FILTER FABRIC. FILTER ASSEMBLY MAY BE CLEANED AT AN ACCEPTABLE LOCATION WITH WATER OR BY BRUSHING AND BLOWING CLEAN WITH COMPRESSED AIR. MAINTENANCE AND CLEANING OF STRUCTURES WILL NOT BE MEASURED AND PAID FOR DIRECTLY BUT SHALL BE INCLUDED IN THE PRICE BID FOR THE STRUCTURE.

CATCH BASIN FILTER ASSEMBLY GENERAL NOTES (CONT.)

- (E) DEFECTIVE WOOD, HARDWARE CLOTH OR FILTER FABRIC SHALL BE REPLACED AS NECESSARY TO INSURE PROPER FUNCTIONING OF FILTER ASSEMBLY. REUSE OF ASSEMBLIES IS ACCEPTABLE PROVIDED THE UNIT IS IN PROPER WORKING CONDITION. APPROVAL MUST BE GIVEN BY TDOT ENGINEER.
- (F) ASSEMBLY AND STONE SHALL BE REMOVED AFTER UPSTREAM VEGETATION HAS BEEN ESTABLISHED OR OTHER SEDIMENT CONTROL STRUCTURES ARE IN PLACE. BACKFILL AND COMPACT ANCHOR TRENCH TO FINAL GRADE AS REQUIRED AFTER REMOVAL.
- (G) IF NECESSARY, AT DIRECTION OF TDOT ENGINEER, SLIPCOVER MAY BE SECURED IN PLACE AT THE LOWEST PRACTICAL POINT WITH NYLON STRING, TWINE, WIRE OR OTHER SUITABLE MATERIAL.
- (H) WHERE LARGE QUANTITIES OF SEDIMENT OR HIGH VELOCITIES OF APPROACHING WATER ARE ANTICIPATED DUE TO SPACING OF CATCH BASINS, DITCH GRADE, ETC... OTHER EROSION PREVENTION AND SEDIMENT CONTROL DEVICES MAY BE NECESSARY UPSTREAM OF FILTER ASSEMBLY.
- (I) ALL LABOR AND MATERIALS NECESSARY TO CONSTRUCT AND INSTALL TEMPORARY CATCH BASIN FILTER ASSEMBLY INCLUDING TRENCHING, BACKFILLING, STONE, AND SLIPCOVER SHALL BE PAID FOR UNDER ITEM NUMBER 209-40.42, CATCH BASIN FILTER ASSEMBLY (TYPE 2), PER EACH.