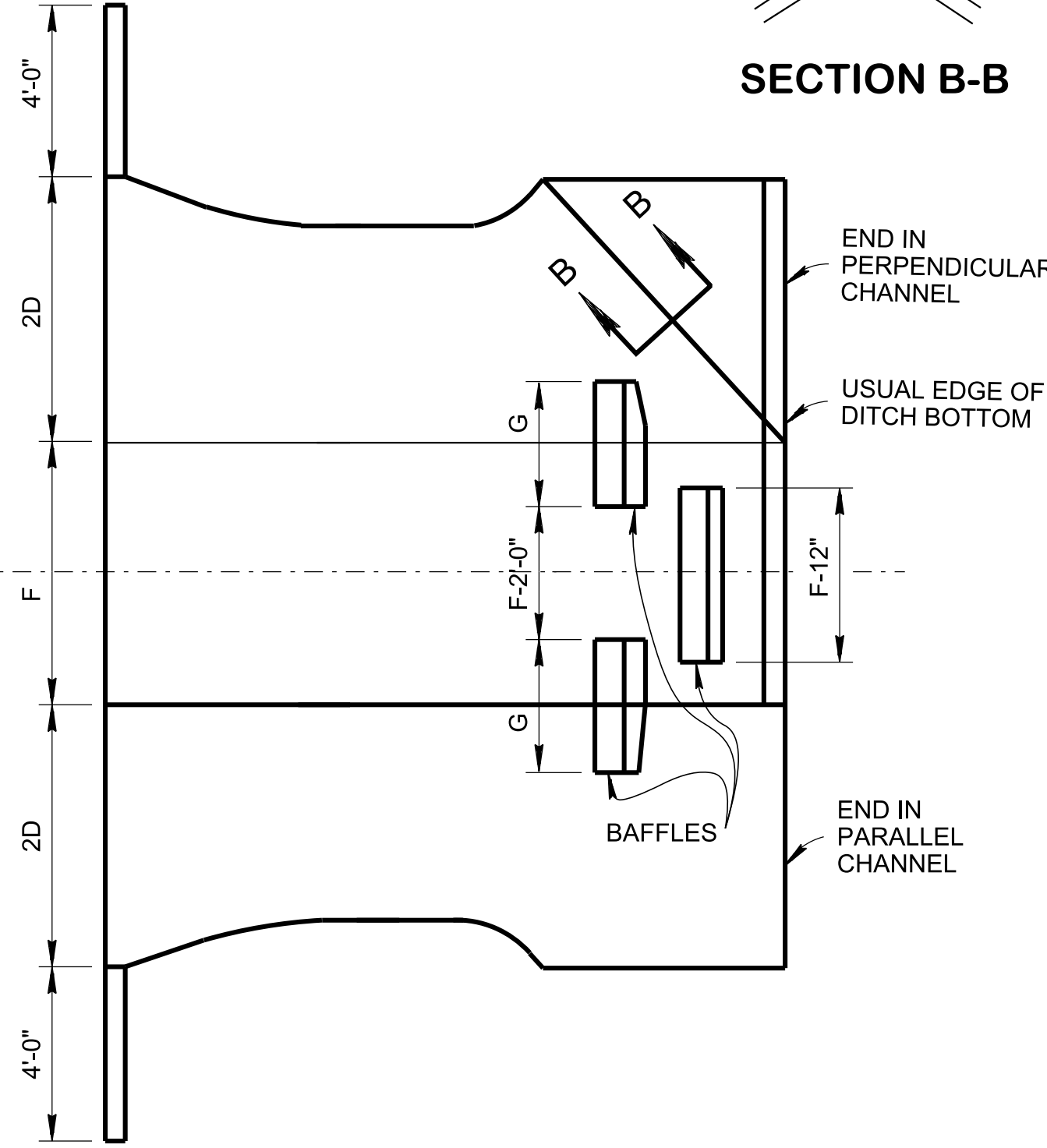
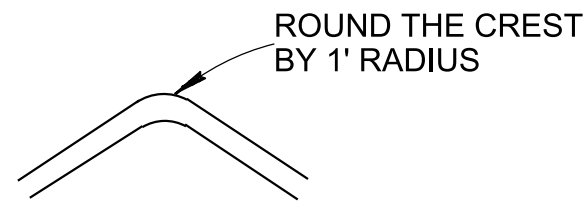


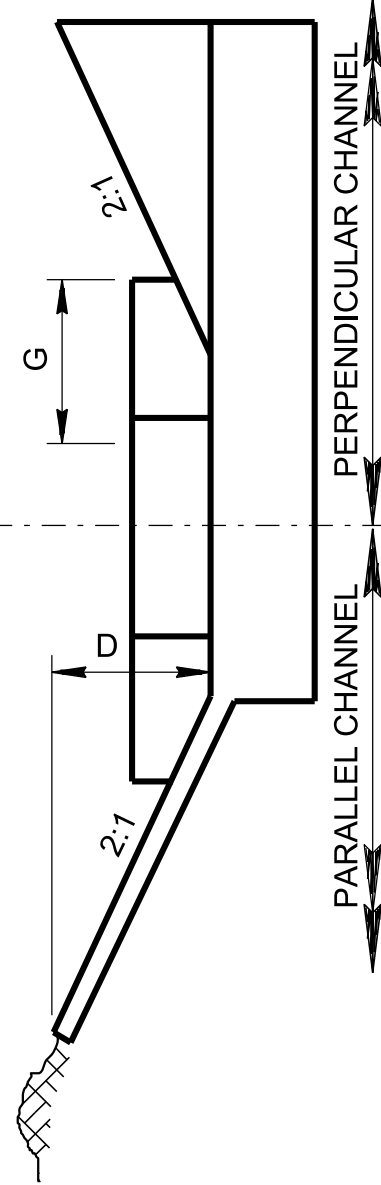
UPPER END ELEVATION VIEW



SECTION B-B

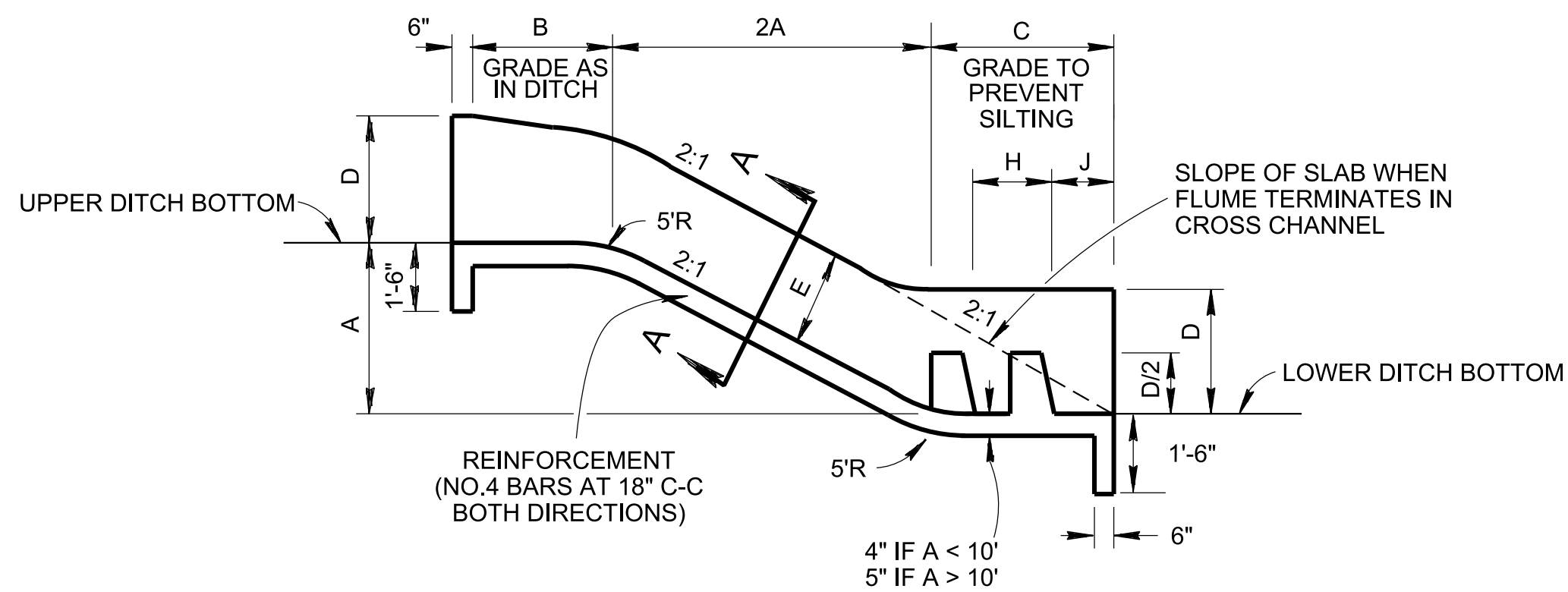


LOWER END HALF ELEVATION VIEW

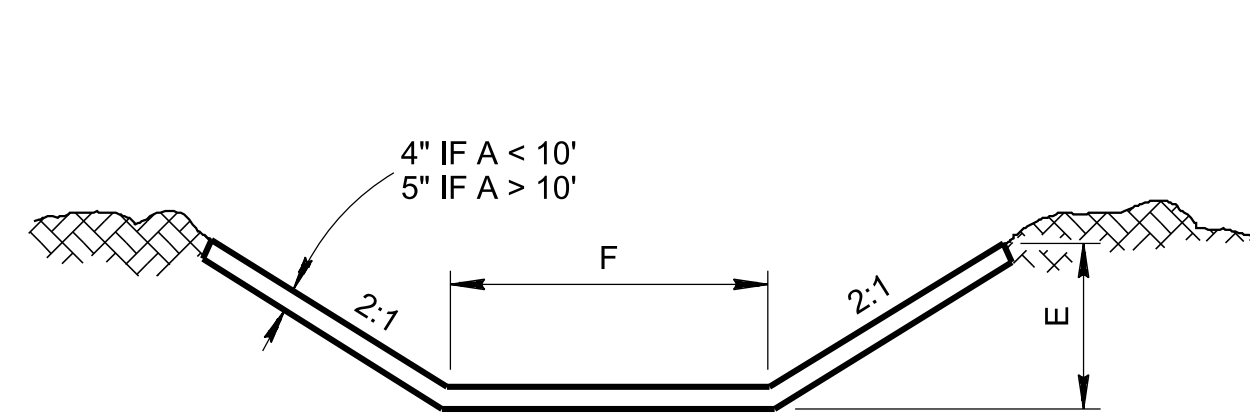


VARIABLE QUANTITIES		FLUME QUANTITIES (CONC. C.Y.)															
		TYPE A CAPACITY 17.8 CFS		TYPE B CAPACITY 29.5 CFS		TYPE C CAPACITY 40.6 CFS		TYPE D CAPACITY 61.0 CFS		TYPE E CAPACITY 81.3 CFS		TYPE F CAPACITY 135 CFS		TYPE G CAPACITY 172 CFS			
A	2A	PERP.	PAR.	PERP.	PAR.	PERP.	PAR.	PERP.	PAR.	PERP.	PAR.	PERP.	PAR.	PERP.	PAR.		
2'-0"	4'-0"	2.491	2.324	3.061	2.839	3.596	3.373	4.453	4.120	4.998	4.665	6.249	5.804	7.049	6.604		
2'-6"	5'-0"	2.615	2.449	3.208	2.987	3.771	3.546	4.647	4.314	5.220	4.886	6.517	6.072	7.344	6.900		
3'-0"	6'-0"	2.740	2.573	3.356	3.135	3.946	3.724	4.842	4.508	5.441	5.108	6.785	6.340	7.640	7.196		
3'-6"	7'-0"	2.865	2.698	3.504	3.282	4.122	3.900	5.036	4.702	5.663	5.330	7.053	6.608	7.936	7.491		
4'-0"	8'-0"	2.989	2.823	3.652	3.430	4.297	4.075	5.230	4.896	5.885	5.552	7.321	6.876	8.231	7.787		
4'-6"	9'-0"	3.114	2.947	3.799	3.578	4.473	4.251	5.424	5.091	6.107	5.773	7.589	7.144	8.527	8.083		
5'-0"	10'-0"	3.239	3.072	3.947	3.726	4.648	4.426	5.618	5.285	6.328	5.995	7.857	7.412	8.823	8.378		
5'-6"	11'-0"	3.363	3.197	4.095	3.874	4.824	4.602	5.812	5.479	6.550	6.217	8.125	7.680	9.118	8.674		
6'-0"	12'-0"	3.488	3.321	4.243	4.022	4.999	4.777	6.006	5.673	6.772	6.439	8.394	7.949	9.414	8.970		
6'-6"	13'-0"	3.613	3.446	4.391	4.169	5.175	4.952	6.201	5.867	6.994	6.660	8.662	8.217	9.710	9.265		
7'-0"	14'-0"	3.737	3.571	4.538	4.317	5.350	5.128	6.395	6.061	7.215	6.882	8.930	8.485	10.006	9.561		
7'-6"	15'-0"	3.862	3.695	4.686	4.465	5.526	5.303	6.589	6.255	7.437	7.104	9.198	8.753	10.301	9.857		
8'-0"	16'-0"	3.987	3.820	4.834	4.613	5.701	5.479	6.783	6.450	7.659	7.326	9.466	9.020	10.597	10.152		
8'-6"	17'-0"	4.111	3.945	4.982	4.761	5.876	5.654	6.977	6.644	7.881	7.547	9.734	9.289	10.893	10.448		
9'-0"	18'-0"	4.236	4.070	5.129	4.909	6.052	5.830	7.171	6.838	8.103	7.769	10.002	9.557	11.188	10.744		
9'-6"	19'-0"	4.361	4.194	5.278	5.057	6.227	6.005	7.366	7.032	8.324	7.991	10.270	9.825	11.484	11.040		
10'-0"	20'-0"	4.486	4.319	5.426	5.204	6.403	6.181	7.560	7.226	8.546	8.213	10.538	10.093	11.780	11.335		

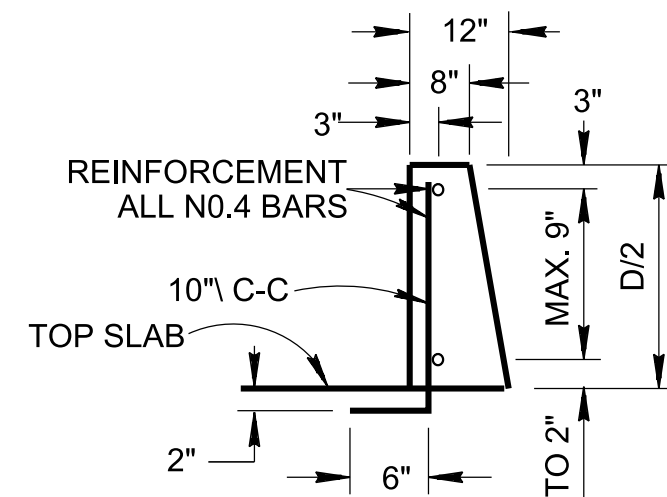
PLAN VIEW



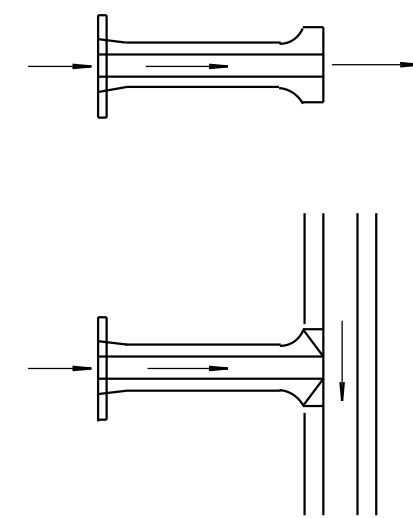
{ ELEVATION VIEW



SECTION A-A



BAFFLE DETAIL



DIMEN- SION	FLUME TYPE						
	TYPE A	TYPE B	TYPE C	TYPE D	TYPE E	TYPE F	TYPE G
B	2'-6"	2'-6"	3'-0"	3'-0"	3'-6"	4'-0"	4'-6"
C	4'-6"	4'-9"	5'-0"	5'-6"	5'-6"	6'-0"	6'-0"
D	1'-6"	2'-0"	2'-0"	3'-0"	3'-0"	4'-0"	4'-0"
E	1'-1 1/2"	1'-6"	1'-6"	2'-3"	2'-3"	3'-0"	3'-0"
F	4'-0"	4'-0"	4'-0"	6'-0"	6'-0"	6'-0"	8'-0"
G	2'-6"	2'-6"	3'-0"	3'-0"	3'-0"	3'-0"	3'-0"
H	2'-0"	2'-3"	2'-6"	2'-6"	2'-6"	3'-0"	3'-0"
J	1'-6"	1'-6"	1'-6"	2'-0"	2'-0"	2'-0"	2'-0"

FIXED DIMENSIONS

BAFFLE QUANTITIES	
FLUME	CONC. C.Y.
TYPE A	0.15
TYPE B	0.21
TYPE C	0.27
TYPE D	0.33
TYPE E	0.44
TYPE F	0.61
TYPE G	0.73

SUMMARY OF FLUMES

LOCATION	FLUME		CONCRETE		
	HEIGHT A	BAFFLES C.Y.	FLUME C.Y.	TOTAL C.Y.	
STATION TO STATION					

MATERIAL SPECIFICATIONS	
①	FOR SPECIFICATIONS SEE "STANDARD SPECIFICATION FOR ROAD AND BRIDGE CONSTRUCTION" OF THE TENNESSEE DEPARTMENT OF TRANSPORTATION.
②	ALL CONCRETE TO BE CLASS "A" F _c = 3,000 POUNDS PER SQUARE INCH AT 28 DAYS.
③	ALL REINFORCING STEEL TO MEET ASTM A615 SPECIFICATION, F _y = 60,000 POUNDS PER SQUARE INCH.

GENERAL NOTE	
(A)	FOR QUANTITIES OF FLUME FOR A HEIGHT NOT SHOWN HERE, INTERPOLATE THE NEAREST TWO QUANTITIES. USE BAFFLES ONLY FOR FLUMES HIGHER THAN 3'-6" OR WHEN PROVEN NECESSARY.
(B)	PAYMENT FOR CONCRETE FLUMES WILL BE MADE UNDER ITEM NO. 703-02, CEMENT CONCRETE DITCH PAVING (REINFORCED) PER CUBIC YARD.

MINOR REVISION -- FHWA APPROVAL NOT REQUIRED

STATE OF TENNESSEE
STANDARD DRAWING
DEPARTMENT OF TRANSPORTATION

**FLUME
DETAILS**