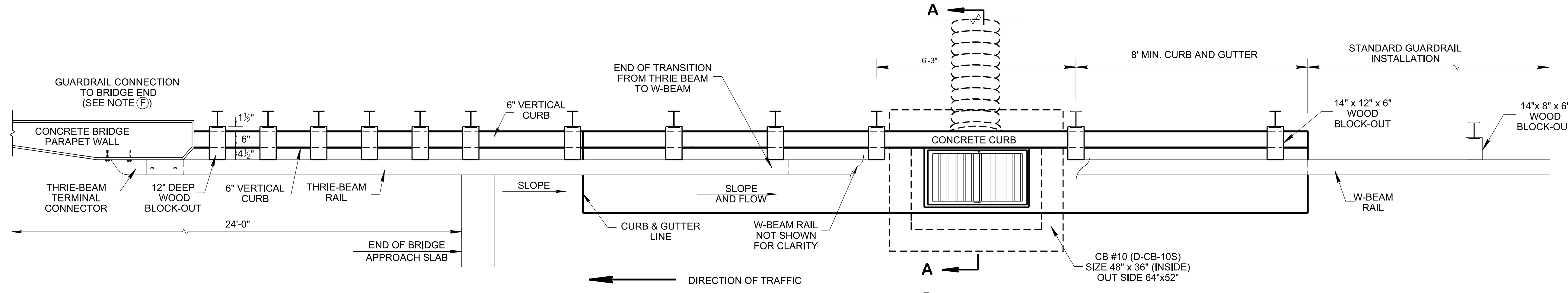
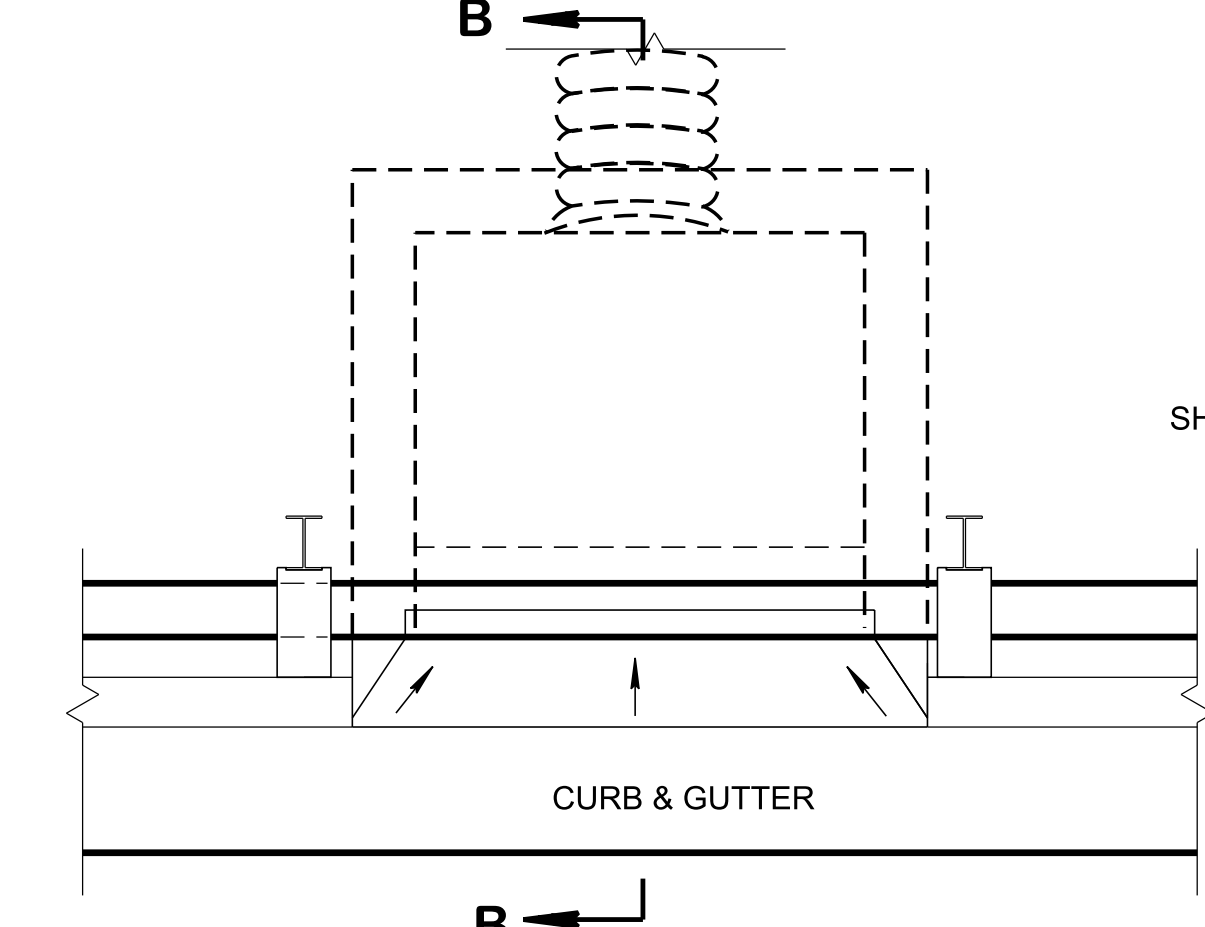


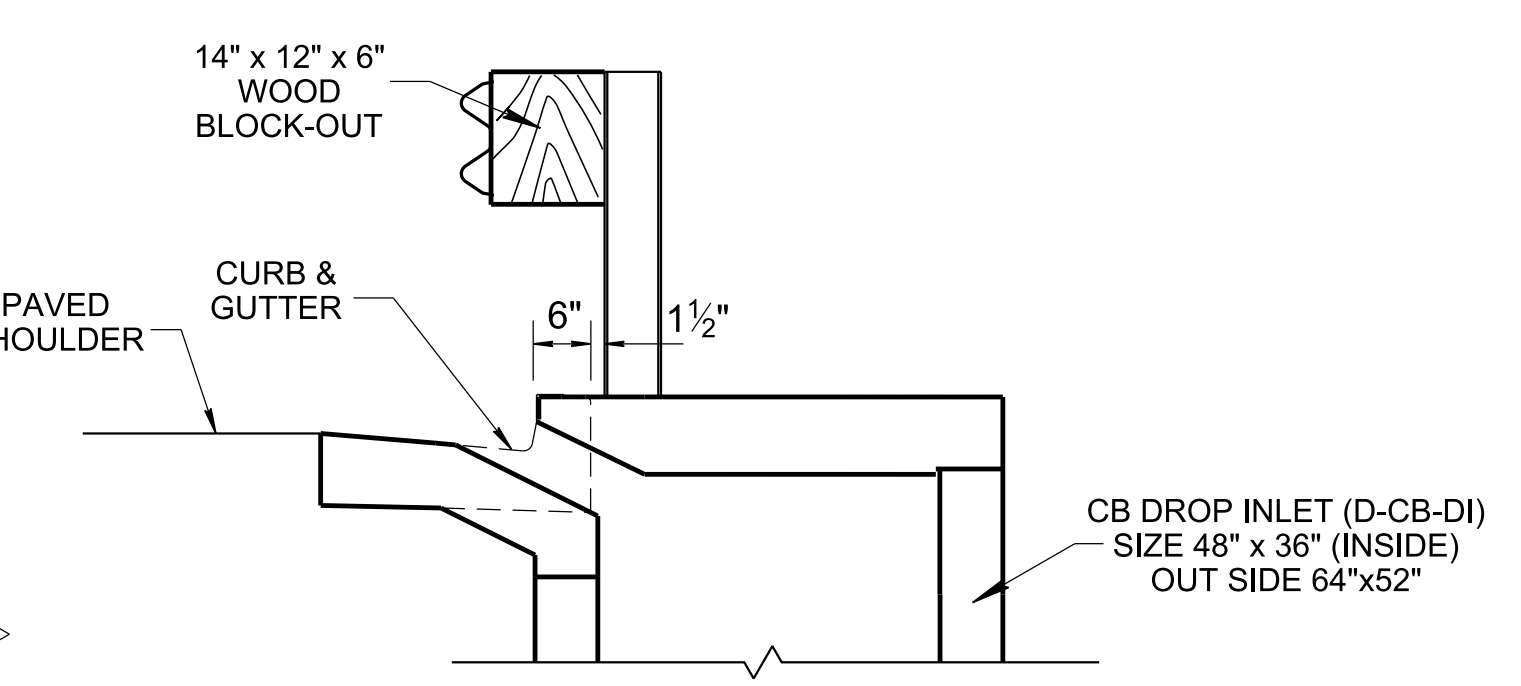
7/6/2023 2:36:01 PM P:\StandDraw\DESIGN STANDARDS\Standards Drawings\Standard Roadway Drawings - CURRENT\In Progress\10-101.00 Pipe Culverts and Endwalls IP\101.01 Pipe Culverts and Flumes IP\DFLU2-202301



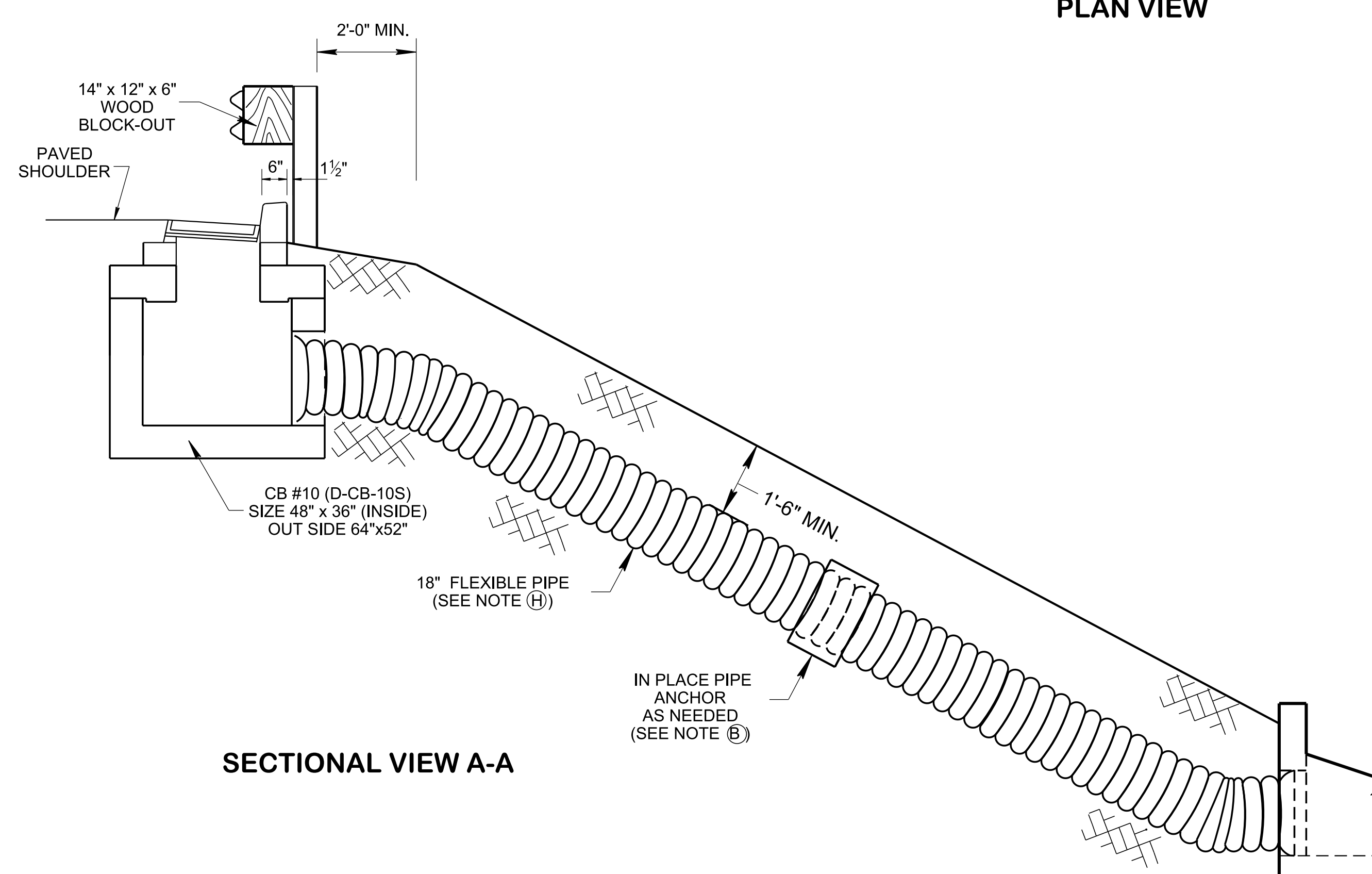
**PLAN VIEW**



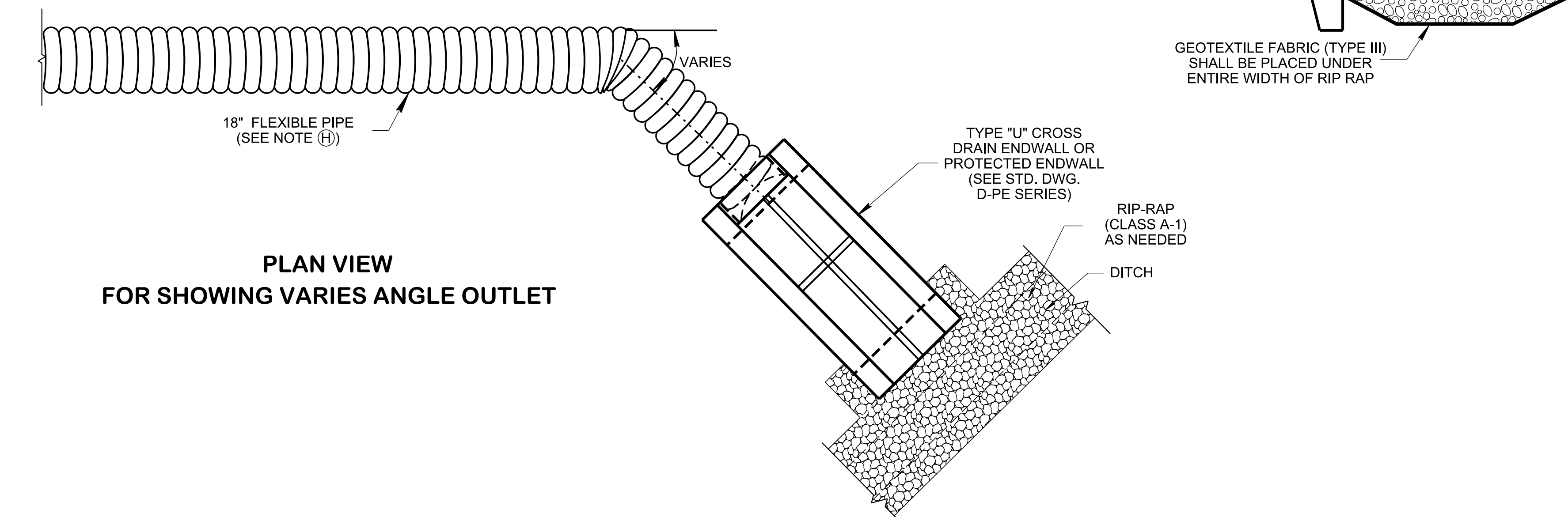
**PLAN VIEW  
ALTERNATIVE CATCH BASIN  
DROP INLET (STD. DWG. D-CB-DI)**



**SECTION B-B**



**SECTIONAL VIEW A-A**



**PLAN VIEW  
FOR SHOWING VARIES ANGLE OUTLET**

**NOTE TO DESIGNER**  
USE AND PLACEMENT OF FLUMES TO BE COORDINATED WITH HYDRAULIC DESIGN SECTION OF STRUCTURES DIVISION.

- GENERAL NOTES**
- (A) THIS DRAWING SHALL BE USED FOR BRIDGE ENDS DRAINAGE ONLY. SEE STANDARD DRAWING D-FLU-2A FOR BRIDGE END DRAIN ALTERNATIVE DESIGN. SEE STANDARD DRAWINGS D-CB-10S AND D-CB-DI FOR ADDITIONAL CONSTRUCTION NOTES AND DETAILS. FOR SPECIFICATION SEE "STANDARD SPECIFICATION FOR ROAD AND BRIDGE CONSTRUCTION" OF THE TENNESSEE DEPARTMENT OF TRANSPORTATION.
  - (B) FLEXIBLE PIPES USED FOR BRIDGE END DRAIN ARE TO BE ATTACHED TO THE GROUND WITH CONCRETE COLLARS OR OTHER METHODS AS APPROVED BY THE ENGINEER TO ASSURE PROPER ANCHORAGE AND PREVENT THE PIPE FROM SLIPPING DOWN THE SLOPE.
  - (C) PIPE ELBOWS AND BENDS SHALL BE DETERMINED IN THE FIELD PRIOR TO FABRICATION.
  - (D) PREFABRICATED HEADWALLS MAY BE USED WITH APPROVAL BY THE ENGINEER.
  - (E) REFER TO STANDARD DRAWINGS S-GR31 SERIES FOR POSTS, RAIL, AND HARDWARE STANDARDS FOR CONSTRUCTION.
  - (F) REFER TO STANDARD DRAWINGS S-GRC SERIES FOR CONNECTING TO BRIDGE RAIL OR OTHER CONCRETE BARRIER FOR DETAILS.
  - (G) REFER TO STANDARD DRAWING RP-VC-10 FOR CURB AND CURB AND GUTTER DETAILS.
  - (H) REFER TO STANDARD DRAWINGS D-PB-1 OR D-PB-2 FOR PIPE INSTALLATION STANDARD DETAILS.
  - (I) GEOTEXTILE REINFORCEMENT BETWEEN THE EXCAVATED EMBANKMENT AND RIP-RAP STONE. ONLY GEOTEXTILE FABRIC (TYPE III) LISTED ON THE QUALIFIED PRODUCTS LIST SHALL BE USED.
  - (J) ALL COST OF INSTALLATION BRIDGE END DRAIN INCLUDING ALL COMPONENTS SUCH AS CURB AND GUTTER, 12" DEEP BLOCK-OUT, FLEXIBLE PIPE, PIPE ENDWALL, CATCH BASIN, RIP-RAP AND GEOTEXTILE SHALL BE INCLUDED IN THE COST OF BRIDGE.