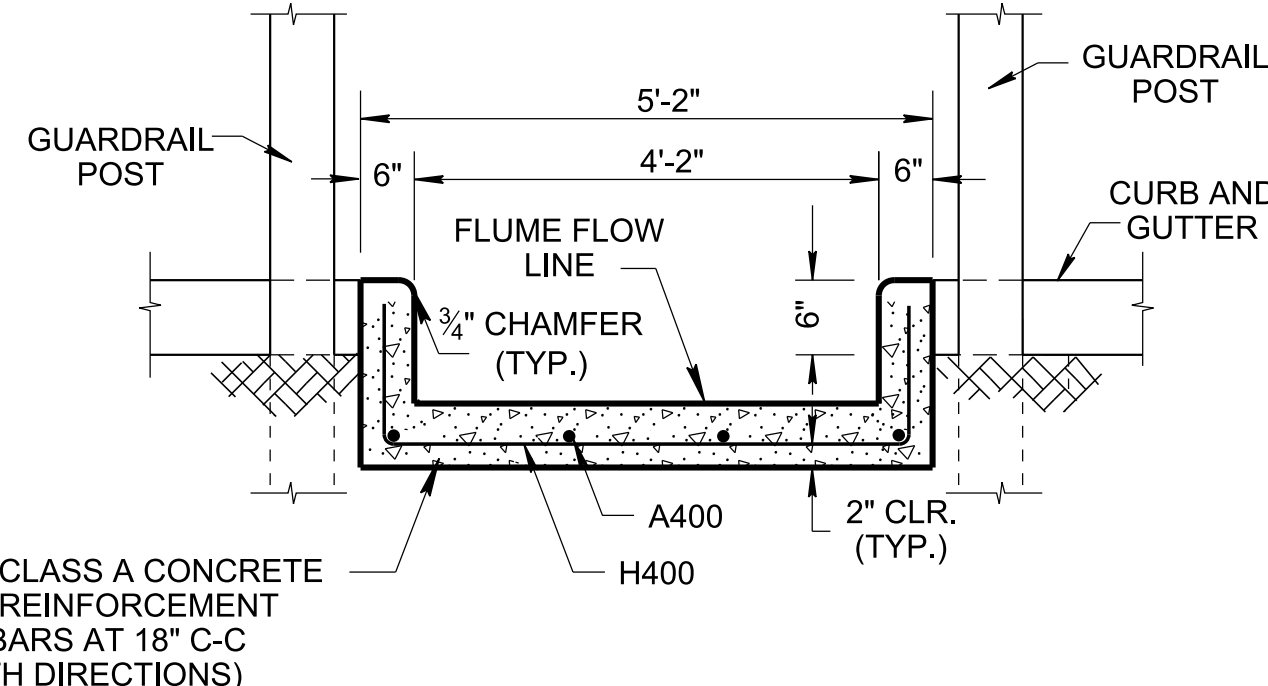
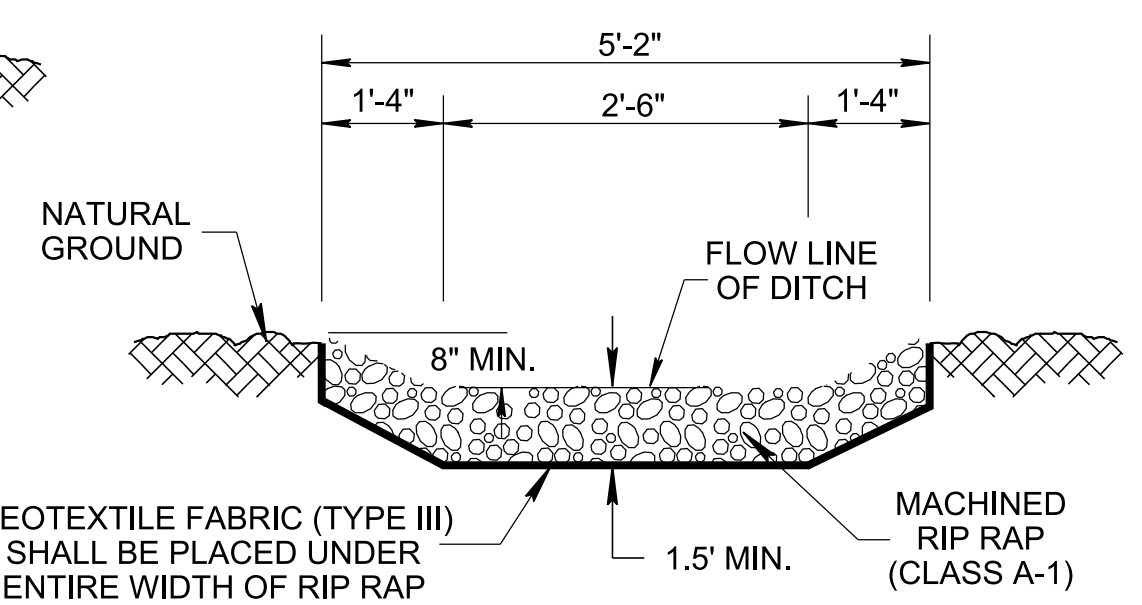


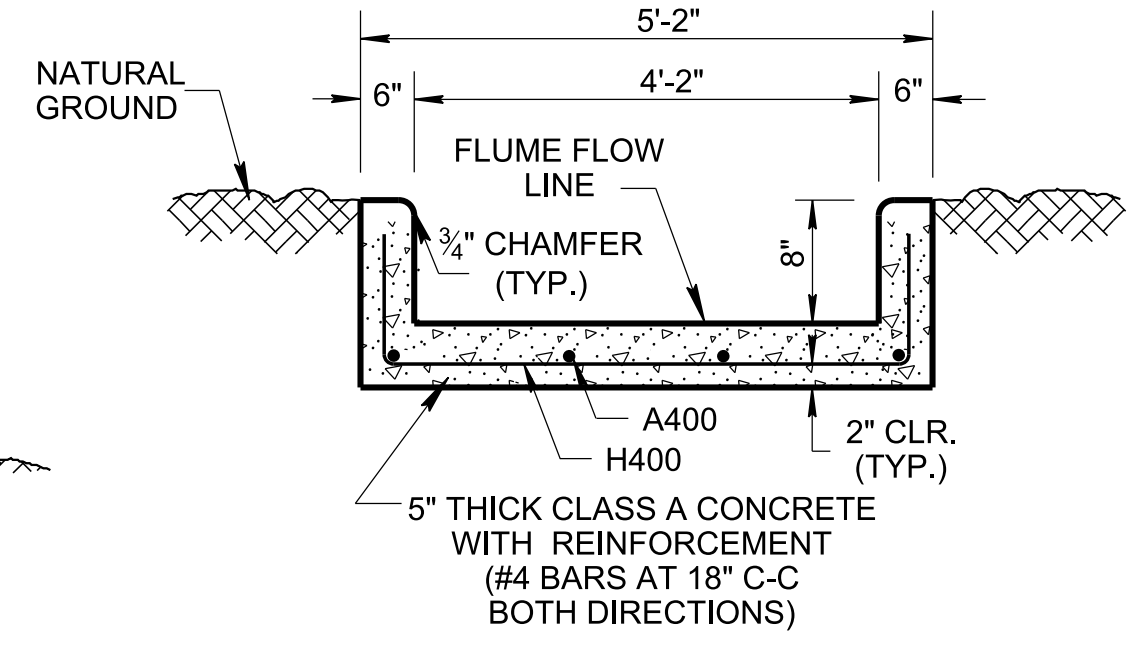
PLAN VIEW



SECTION B-B



SECTION C-C



SECTION D-D

NOTE TO DESIGNER

USE AND PLACEMENT OF FLUMES TO BE COORDINATED WITH HYDRAULIC DESIGN SECTION OF STRUCTURES DIVISION.

- GENERAL NOTES**
- (A) THIS DRAWING SHALL BE USED FOR BRIDGE ENDS DRAINAGE ONLY. SEE STANDARD DRAWING D-FLU-2 FOR BRIDGE END DRAIN ALTERNATIVE DESIGN. FOR SPECIFICATION SEE "STANDARD SPECIFICATION FOR ROAD AND BRIDGE CONSTRUCTION" OF THE TENNESSEE DEPARTMENT OF TRANSPORTATION.
 - (B) ALL CONCRETE TO BE CLASS "A" $F_c = 3,000$ POUNDS PER SQUARE INCH AT 28 DAYS. ALL REINFORCING STEEL TO MEET ASTM A615 SPECIFICATION, $F_y = 60,000$ POUNDS PER SQUARE INCH.
 - (C) EXTEND FLUME TO TOE OF BACKSLOPE. IF NO BACKSLOPE EXISTS, EXTEND FLUME A MINIMUM OF 4 FEET BEYOND THE TOE OF FORESLOPE.
 - (D) REFER TO STANDARD DRAWINGS S-GR31 SERIES FOR POSTS, RAIL, AND HARDWARE STANDARDS FOR CONSTRUCTION.
 - (E) REFER TO STANDARD DRAWINGS S-GRC SERIES FOR CONNECTING TO BRIDGE RAIL OR OTHER CONCRETE BARRIER FOR DETAILS.
 - (F) REFER TO STANDARD DRAWING RP-VC-10 FOR CURB AND CURB AND GUTTER DETAILS.
 - (G) GEOTEXTILE REINFORCEMENT BETWEEN THE EXCAVATED EMBANKMENT AND RIP-RAP STONE. ONLY GEOTEXTILE FABRIC (TYPE III) FROM TDOT QPL SHALL BE USED.
 - (H) FORM DEPRESSION INTO CONCRETE OR ASPHALT PAVEMENT SHOULDER.
 - (J) ALL COST OF INSTALLATION BRIDGE END DRAIN INCLUDING ALL COMPONENTS SUCH AS CURB AND GUTTER, 12" DEEP BLOCK-OUT, ROCK FLUME OR CONCRETE FLUME, RIP-RAP AND GEOTEXTILE SHALL BE INCLUDED IN THE COST OF BRIDGE.