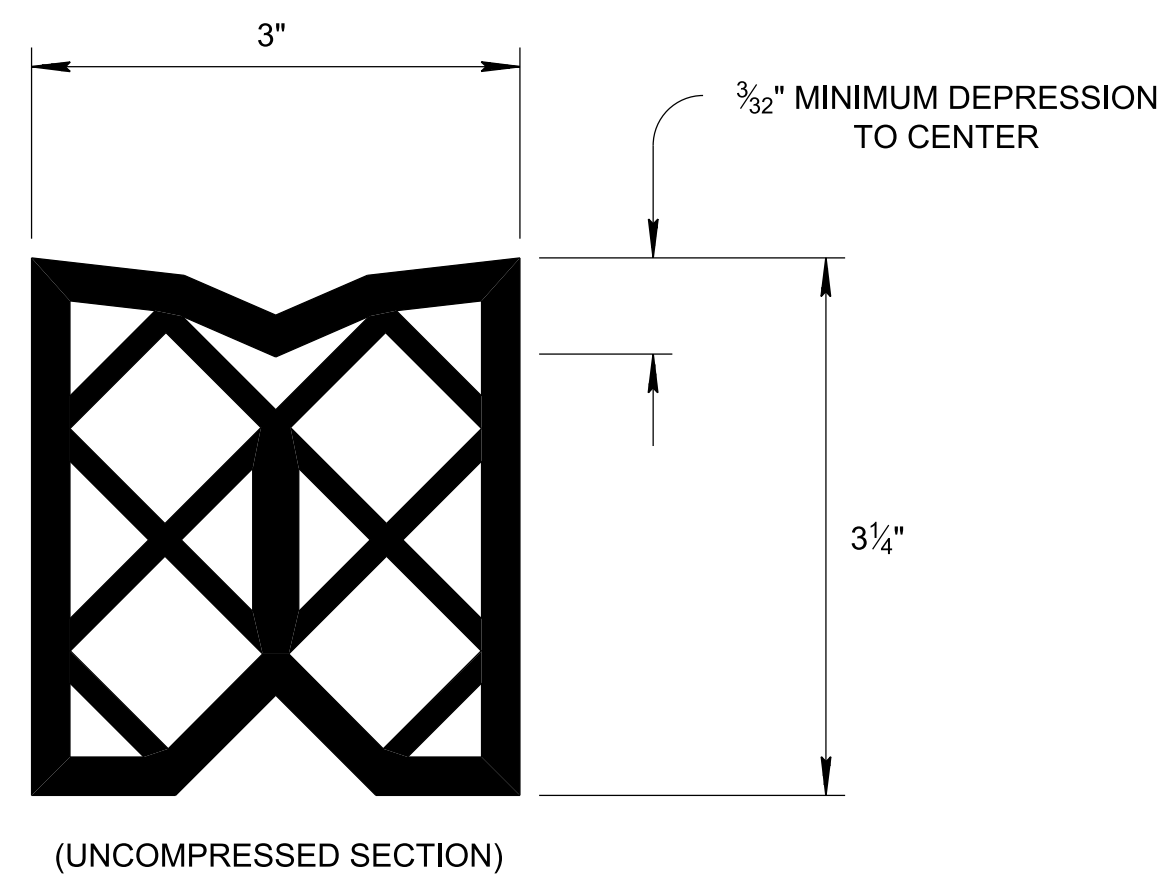
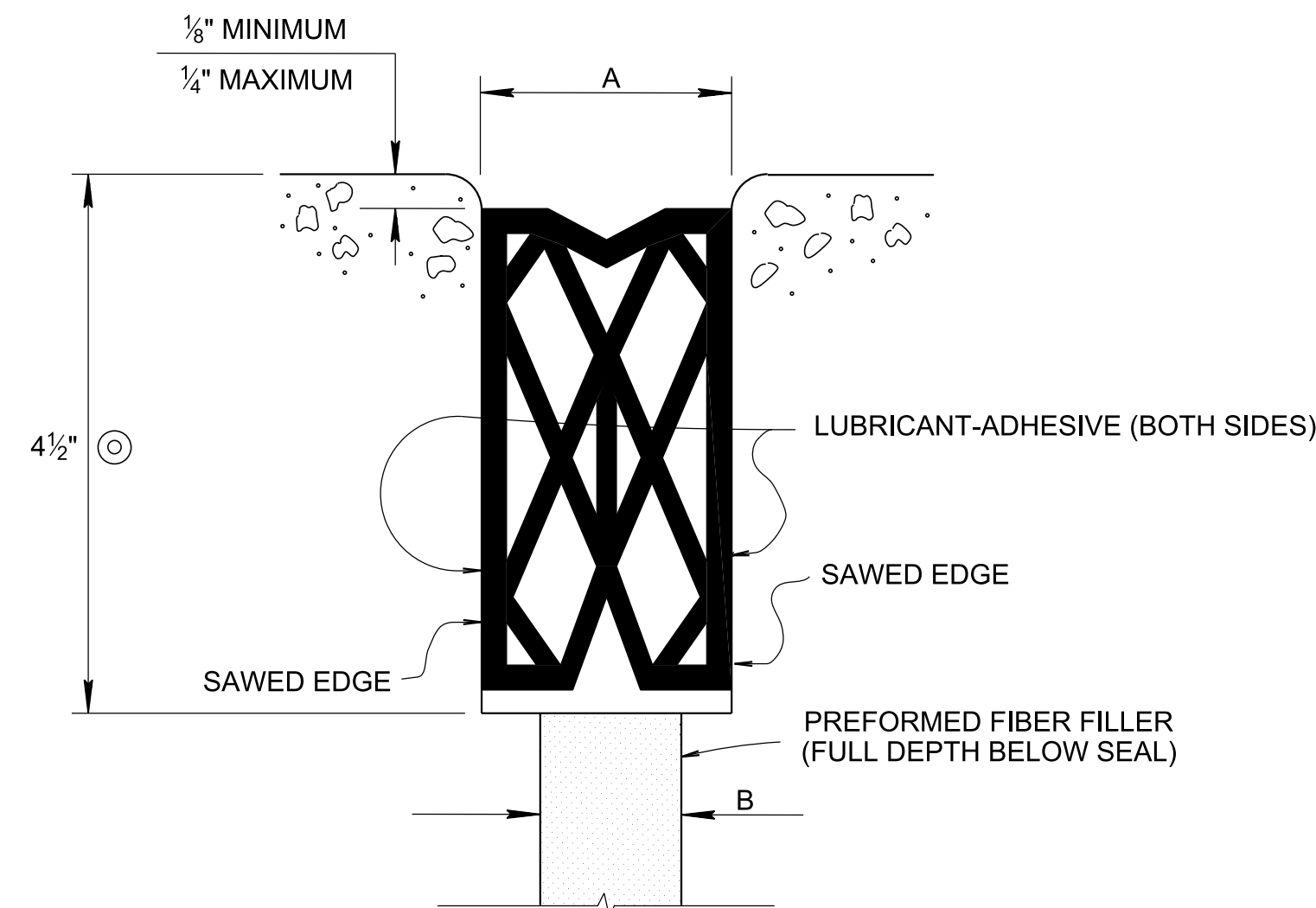


4/15/2020 2:50:05 PM P:\StandDraw\DESIGN STANDARDS\Standards Drawings\Standard Roadway Drawings - CURRENT\In Progress\10-104.00 Roadway, Pavement Appurtenances and Fence IP\104.01 Concrete Pavement IP\RP

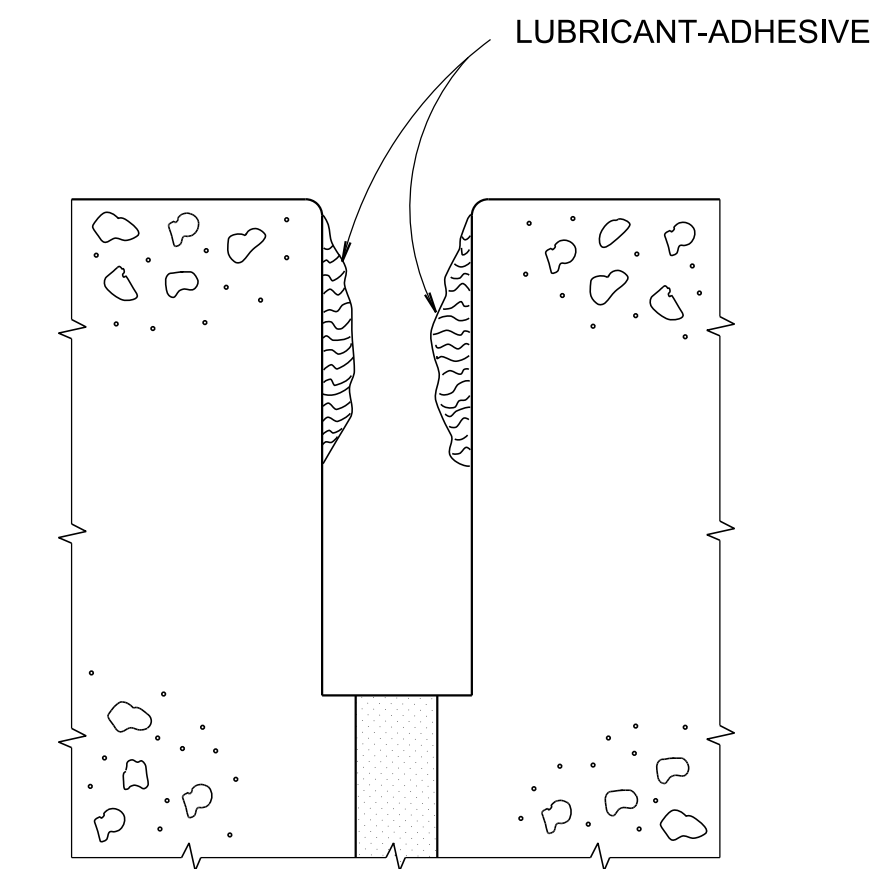


**TYPE I PREFORMED ELASTOMERIC COMPRESSION**  
JOINT SEAL FOR 1 3/4" EXPANSION JOINTS



**DETAIL SHOWING EXPANSION CHARACTERISTICS FOR TYPE I PREFORMED ELASTOMERIC COMPRESSION JOINT SEAL AS APPLIED TO 1 3/4" EXPANSION JOINTS**

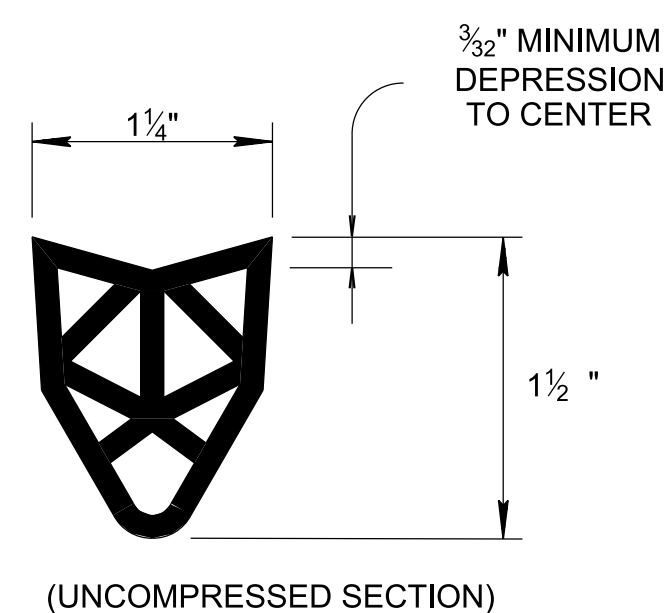
Ⓢ IF THERE IS A VERTICAL SPACE PROBLEM USING THIS JOINT SEAL DUE TO PAVEMENT DEPTH, THE CONTRACTOR WILL REDUCE THIS DEPTH AND SELECT A LOWER PROFILE JOINT SEAL THAT WILL BE CLEAR OF THE DOWEL BARS.



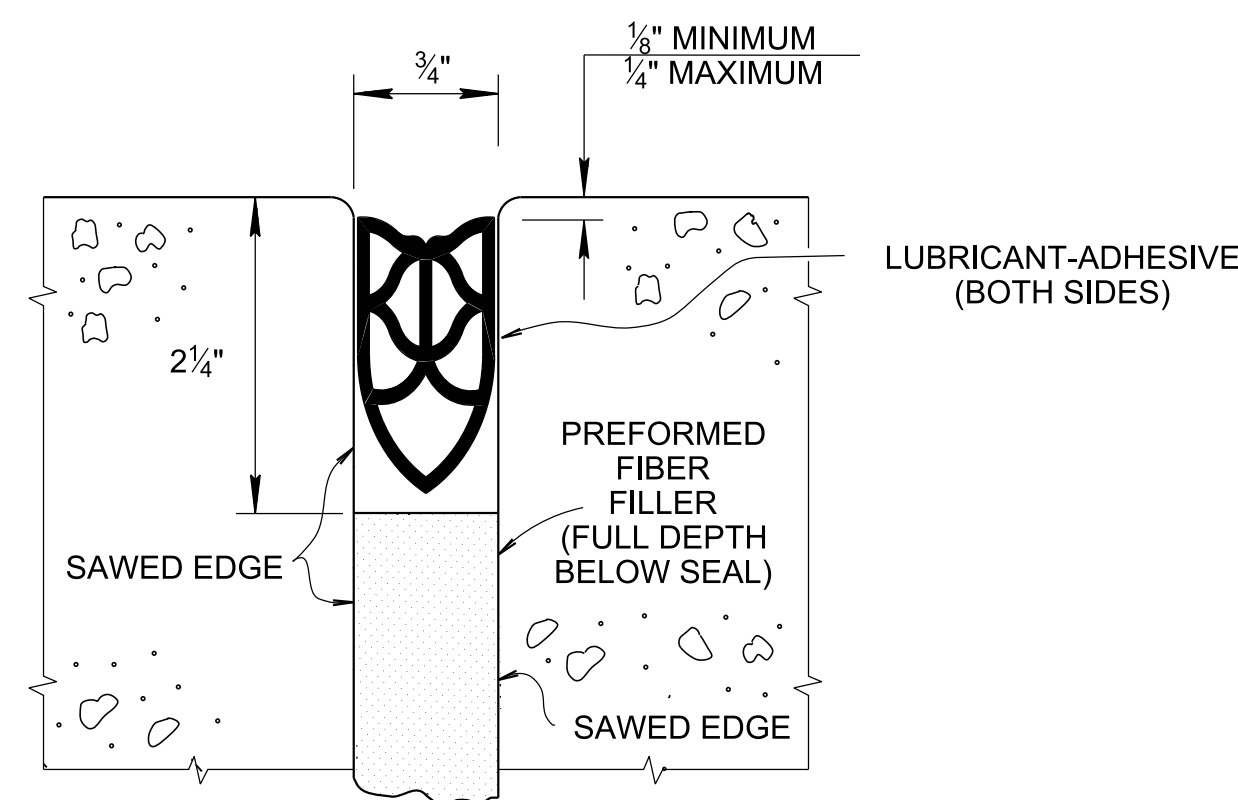
**DETAIL SHOWING LUBRICANT-ADHESIVE**  
(APPLIED TO JOINT PRIOR TO PLACING SEAL)

TABLE OF VARIABLE DIMENSIONS FOR TYPE I PREFORMED ELASTOMERIC 1 3/4" EXPANSION JOINTS IN INCHES		CONCRETE PAVEMENT TEMPERATURE (F°)				
TYPE	DIMENSION	25°	42°	60°	78°	95°
I	A	2 1/2"	2 1/8"	1 3/4"	1 3/8"	1"
	B	1 3/4"	1 3/8"	1"	5/8"	1/4"

SEE STANDARD DRAWINGS RP-J-1, RP-J-5, RP-J-7, AND RP-J-11



**TYPE I PREFORMED ELASTOMERIC COMPRESSION**  
JOINT SEAL FOR 3/4" EXPANSION JOINTS



**3/4" EXPANSION JOINT WITH TYPE I PREFORMED ELASTOMERIC COMPRESSION JOINT SEAL**

SEE DRAWING RP-J-11 FOR JOINT DETAIL  
SEE DRAWING RP-I-5 FOR JOINT LOCATIONS

**GENERAL NOTES**

- (A) THE ELASTOMERIC JOINT SEALS SHALL BE THE OPEN-CELL COMPRESSION TYPE INTENDED FOR USE IN SEALING JOINTS IN CONCRETE PAVEMENT.
- (B) THE CONTRACTOR WILL BE REQUIRED TO FURNISH THE ENGINEER A CERTIFIED COPY OF THE TEST RESULTS INDICATING THAT THE MATERIAL TO BE USED COMPLIES WITH THE SPECIFICATION REQUIREMENTS.
- (C) THE CONTRACTOR SHALL ALSO FURNISH A CERTIFICATION FROM THE MANUFACTURER STATING THE LUBRICATING ADHESIVE MATERIAL MEETS THE SPECIFICATION REQUIREMENTS.
- (D) THE SEAL CONFIGURATION SHOWN IS GENERAL AND MAY VARY WITH JOINT TYPE AND MANUFACTURER.
- (E) THE ELASTOMERIC COMPRESSION SEALS AND LUBRICANT-ADHESIVE SHALL CONFORM TO AASHTO M220 SPECIFICATIONS.
- (F) THE CONTRACTOR SHALL SUBMIT DETAILS OF ELASTOMERIC COMPRESSION JOINT SEALS FOR 1 3/4" EXPANSION JOINT TO MATERIALS AND TEST DIVISION FOR APPROVAL.
- (G) THE JOINTS SHOULD BE FORMED AND CONSTRUCTED TO A TRUE LINE AND HAVE VERTICAL FACES THAT ARE PLUMB.

REV. 6-6-86: CHANGED GENERAL NOTE (C). ADDED GENERAL NOTE (F). DELETED HEIGHT REQUIREMENTS FOR 3/4" JOINT.

REV. 3-20-91: REDREW AND RENAMED SHEET. ELIMINATED DETAIL FOR ELASTOMERIC SEALER FOR 3/4" CONTRACTION AND CONSTRUCTION JOINTS.

REV. 05-01-20: REDREW SHEET.

CROSS-REFERENCE DRAWINGS FOR THIS DRAWING: RP-I-5, RP-J-1, RP-J-5, RP-J-7, RP-J-9, AND RP-J-11.

APPROVED BY FHWA (ALL OTHERS APPROVED BY TDOT)

STATE OF TENNESSEE  
STANDARD DRAWING  
DEPARTMENT OF TRANSPORTATION

3/4" AND 1 3/4" ELASTOMERIC COMPRESSION JOINT SEALS

RP-J-13