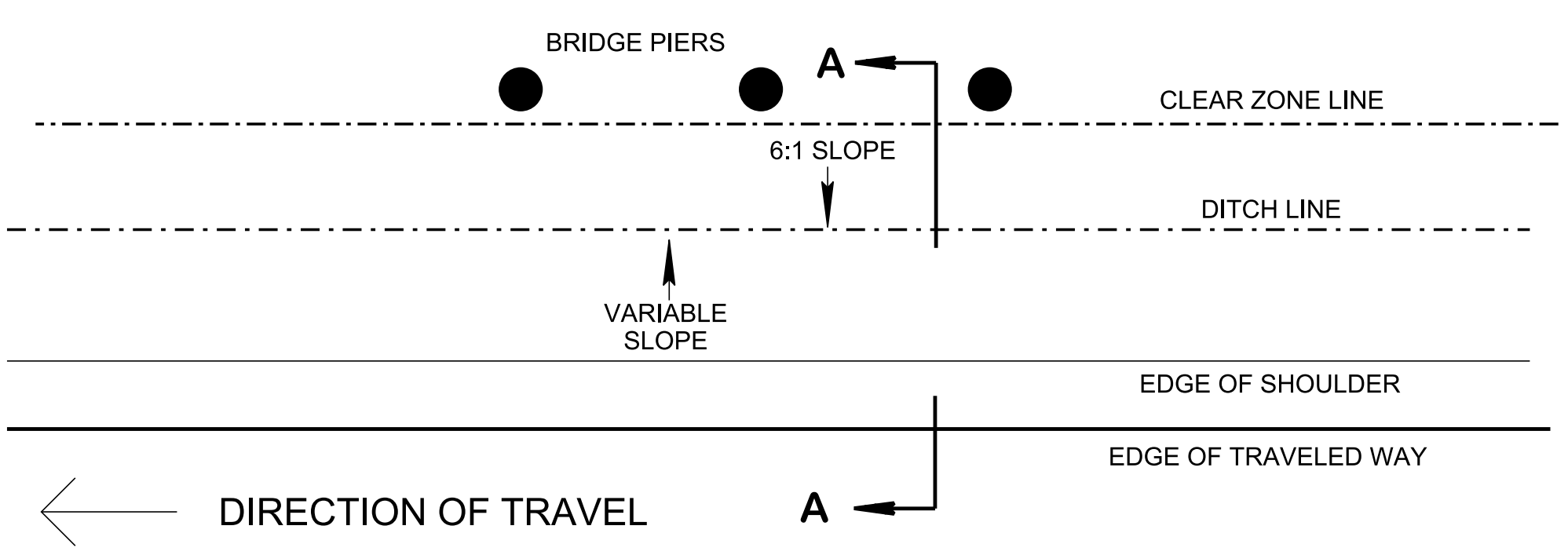
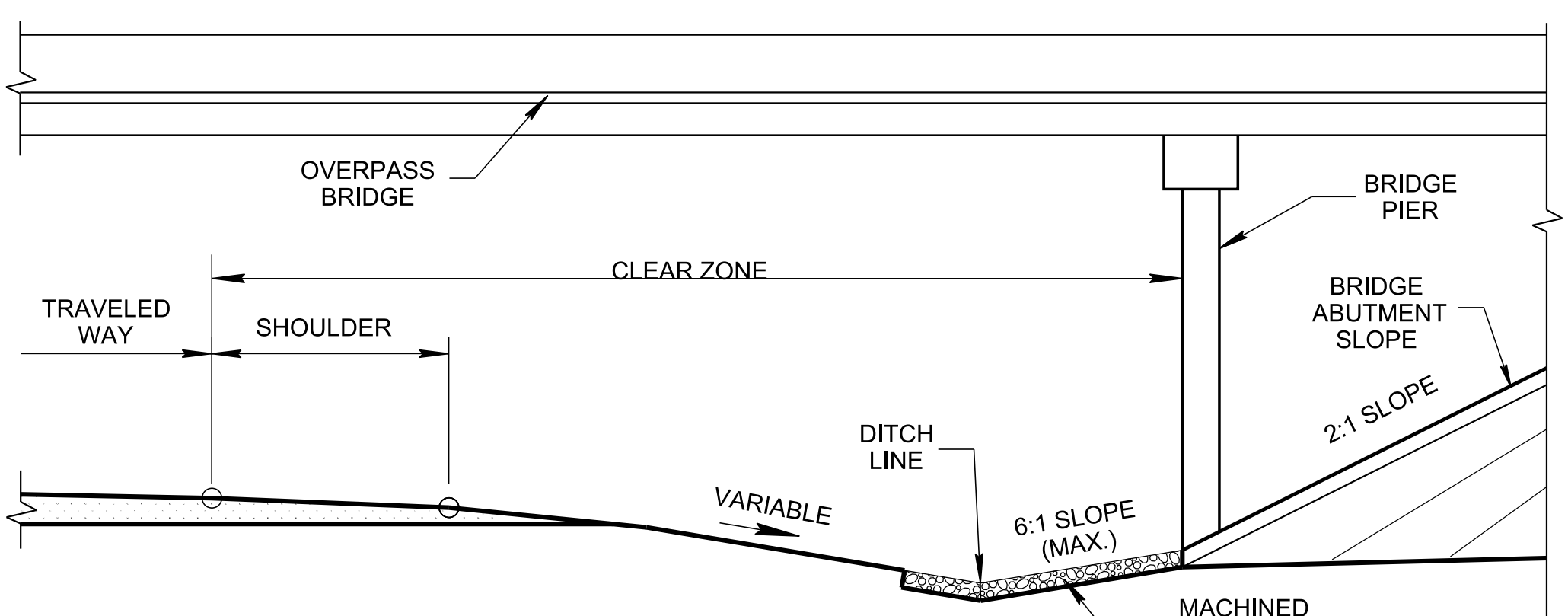


2/6/2024 1:54:58 PM P:\StandDraw\DESIGN STANDARDS\Standards Drawings\Standard Roadway Drawings - CURRENT\In Progress\10-107.00 Safety Design and Guardrails IP\107.01 Clear Zone & Safety Plans IP\SP\4A-2023

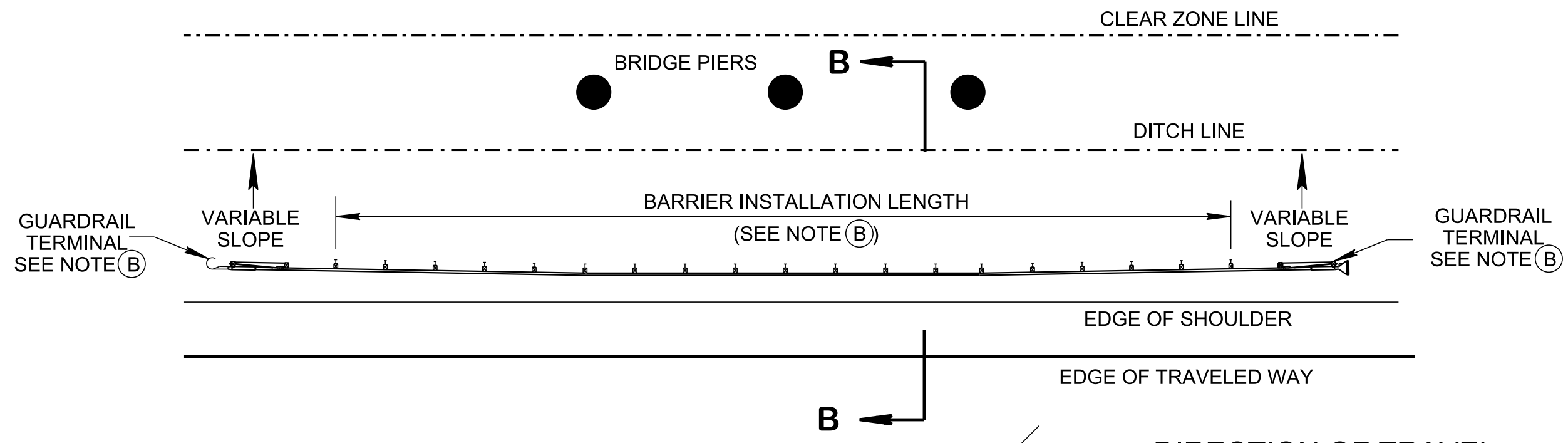
REV. 01-09-2024: ADDED PLAN VIEW FOR BRIDGE PIERS PROTECTED BY CONCRETE BARRIER WALL, AND GENERAL NOTE (E). REVISED SECTION C-C AND GENERAL NOTES. DELETED NOTE TO DESIGNED NOTES.



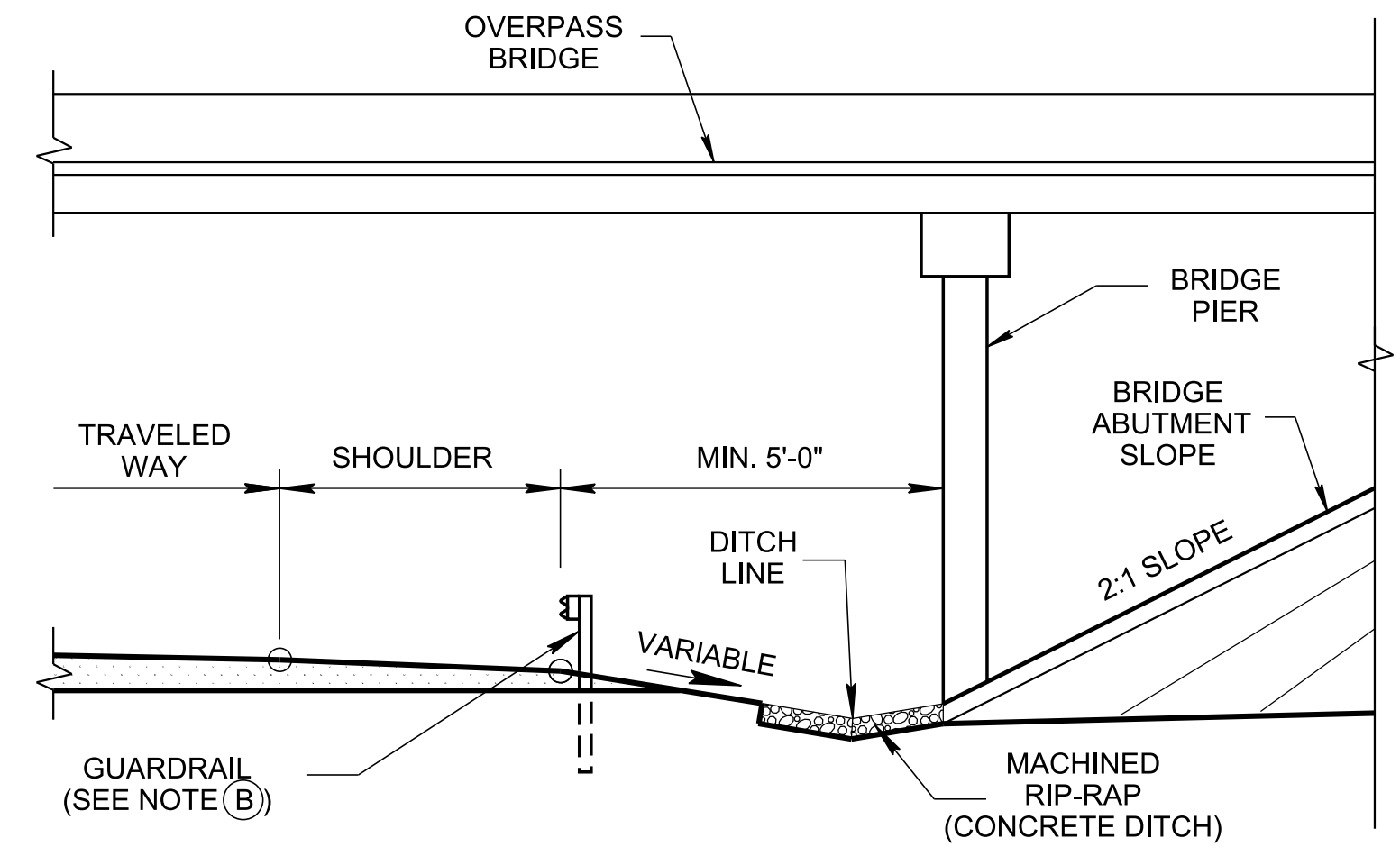
PLAN VIEW
WHEN BRIDGE PIERS OR ABUTMENT SLOPE OUTSIDE CLEAR ZONE



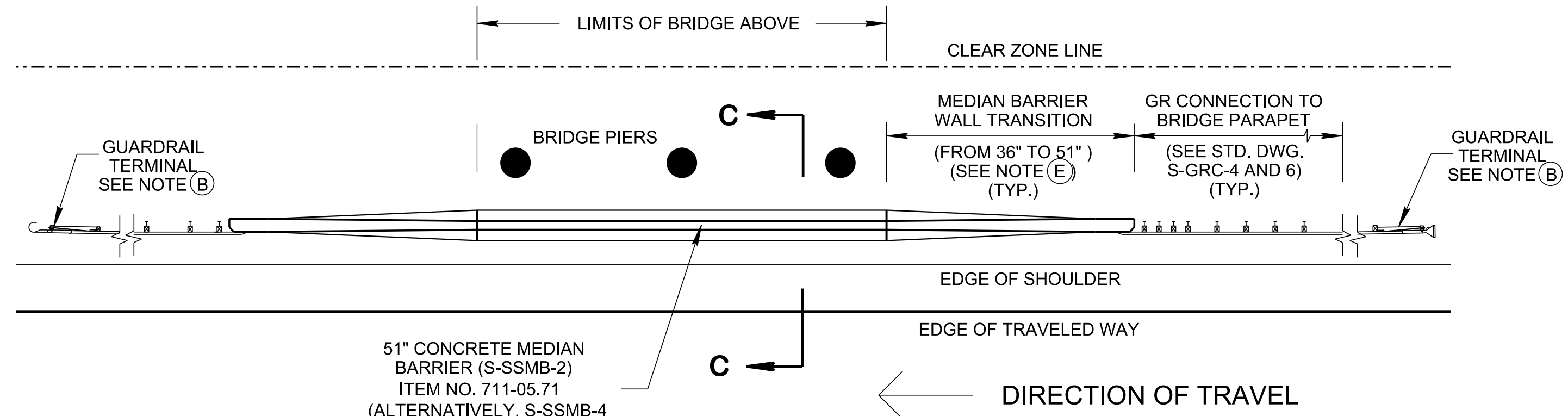
SECTION A-A



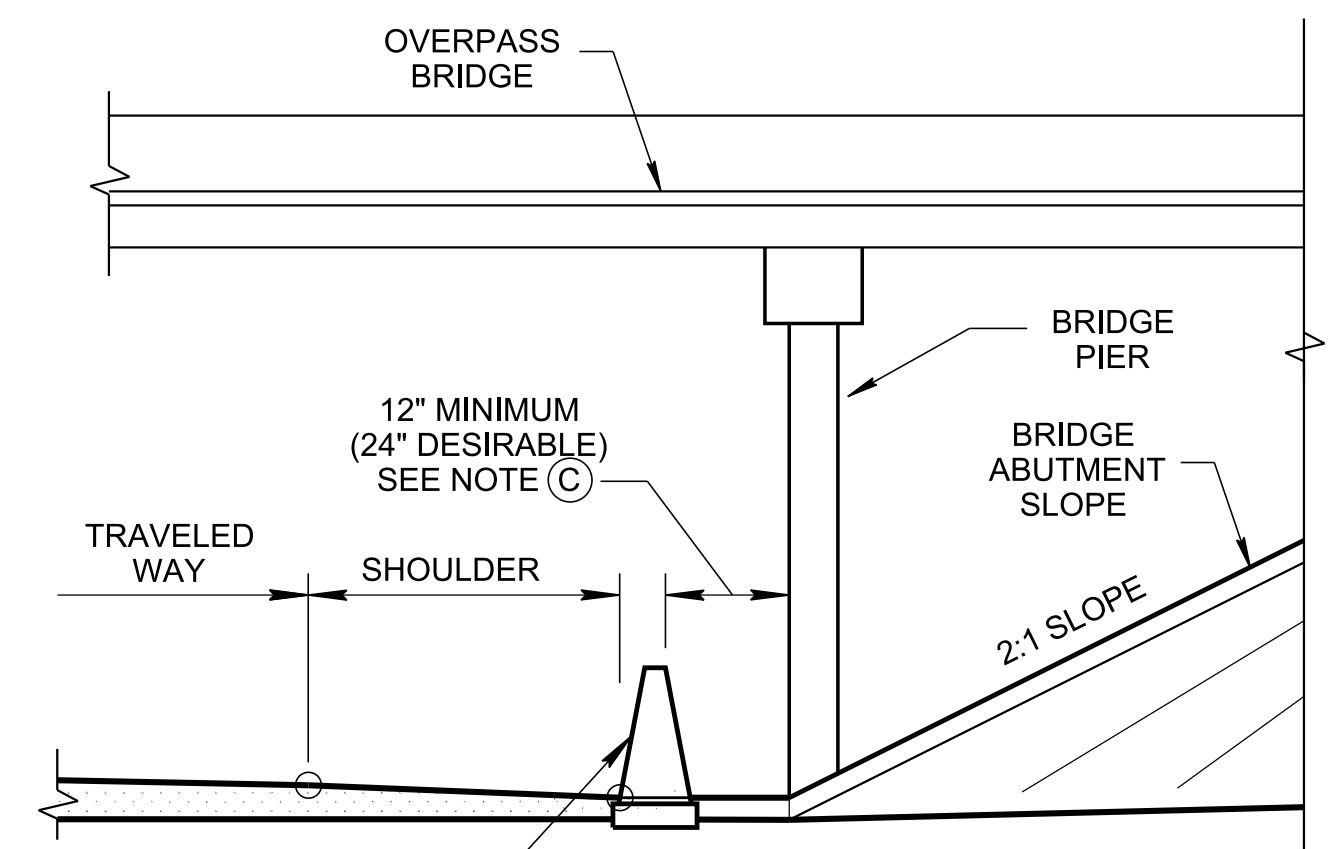
PLAN VIEW
WHEN BRIDGE PIERS OR ABUTMENT SLOPE PROTECTED BY GUARDRAIL



SECTION B-B



PLAN VIEW
WHEN BRIDGE PIERS OR ABUTMENT SLOPE PROTECTED BY CONCRETE BARRIER WALL



SECTION C-C

GENERAL NOTES

- (A) THIS STANDARD DRAWING PROVIDES DIFFERENT OPTIONS FOR INSTALLING ROADSIDE SAFETY HARDWARE TO PROTECT BRIDGE PIERS OR ABUTMENTS.
- (B) SEE THE FOLLOWING TO STANDARD DRAWINGS:
S-PL-1 SERIES FOR SAFETY PLAN FOR BARRIER LENGTH OF NEED,
S-PL-6 FOR SAFETY HARDWARE PLACEMENT ON OUTSIDE EDGE,
S-GRT-2P OR S-GRT-2R FOR ADDITIONAL GRADING REQUIREMENTS AT END TERMINAL,
S-SSMB-2 AND S-SSMB-4 FOR SINGLE SLOPE CONCRETE BARRIER WALL,
S-SSMB-10 FOR ADDITIONAL MEDIAN BARRIER WALL TRANSITION AND
S-PL-4 FOR SAFETY PLAN FOR BRIDGE PIERS/ABUTMENTS IN DEPRESSED MEDIAN.
- (C) DUE TO EXTREME SITE LIMITATIONS WHEN 1 FOOT OFFSET CANNOT BE PROVIDED, DESIGNER SHALL COORDINATE WITH THE STRUCTURES ENGINEER TO ASSURE THE PIER IS DESIGNED TO WITHSTAND IMPACT FORCE MEETING LRFD REQUIREMENTS.
- (D) PAYMENT FOR ALL ITEMS DIRECTLY INDICATED OR IMPLIED ON THIS DRAWING WILL BE MADE UNDER APPROPRIATE ITEM NUMBER(S) AND DESCRIPTION(S) RECORDED ELSEWHERE IN THE PLANS.
- (E) SEE STANDARD DRAWING S-SSMB-6D FOR MEDIAN BARRIER WALL TRANSITION. PAYMENT FOR MEDIAN BARRIER TRANSITION WALL WILL BE INCLUDED IN THE PRICE BID FOR 51" SINGLE SLOPE MEDIAN BARRIER WALL.

STATE OF TENNESSEE
STANDARD DRAWING
DEPARTMENT OF TRANSPORTATION

**SAFETY PLAN TO
FOR BRIDGE
PIERS/ ABUTMENTS
OUTSIDE
THE SHOULDER**