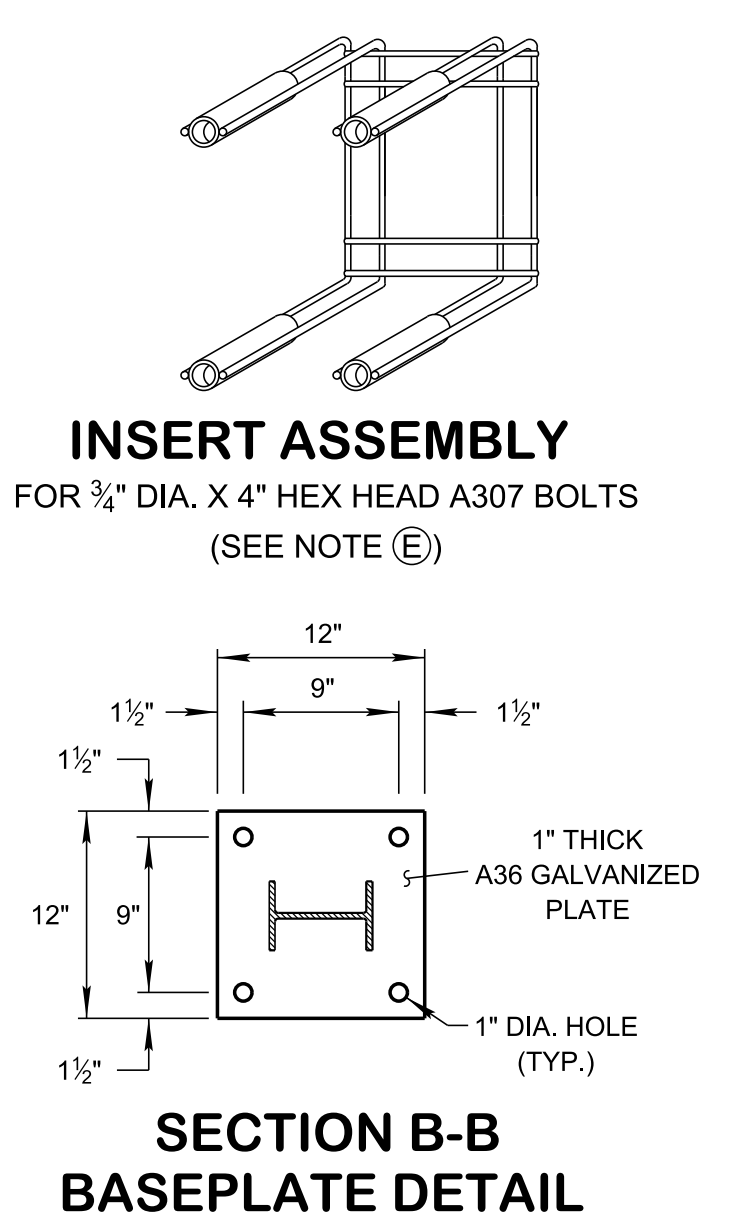
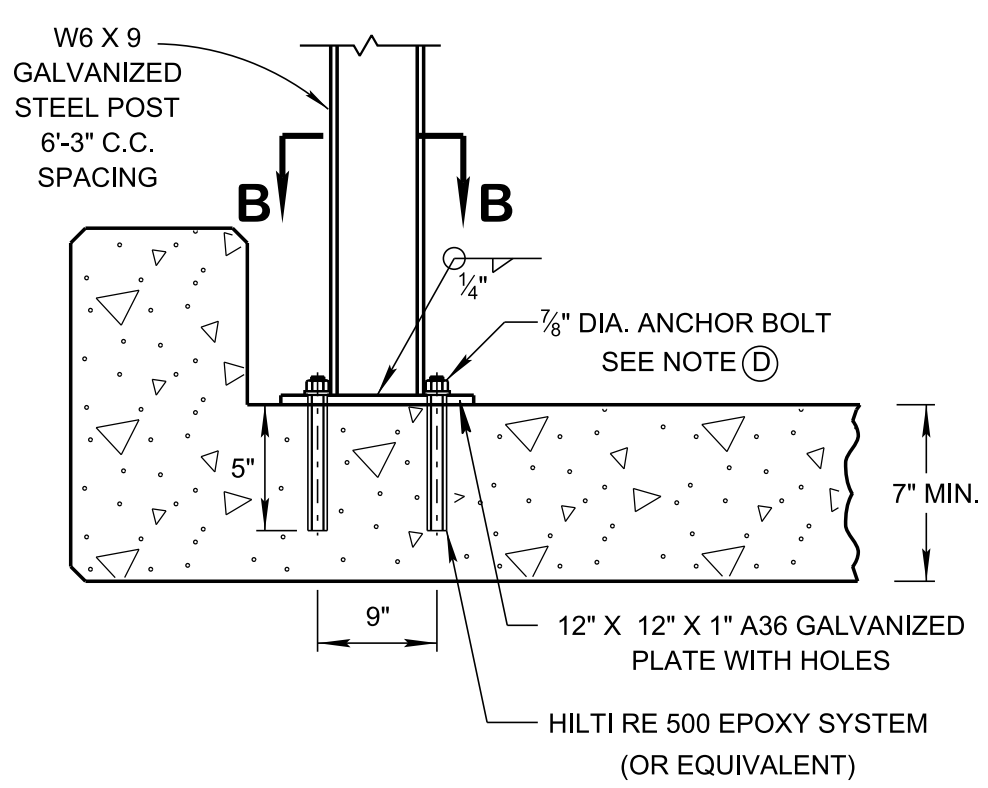
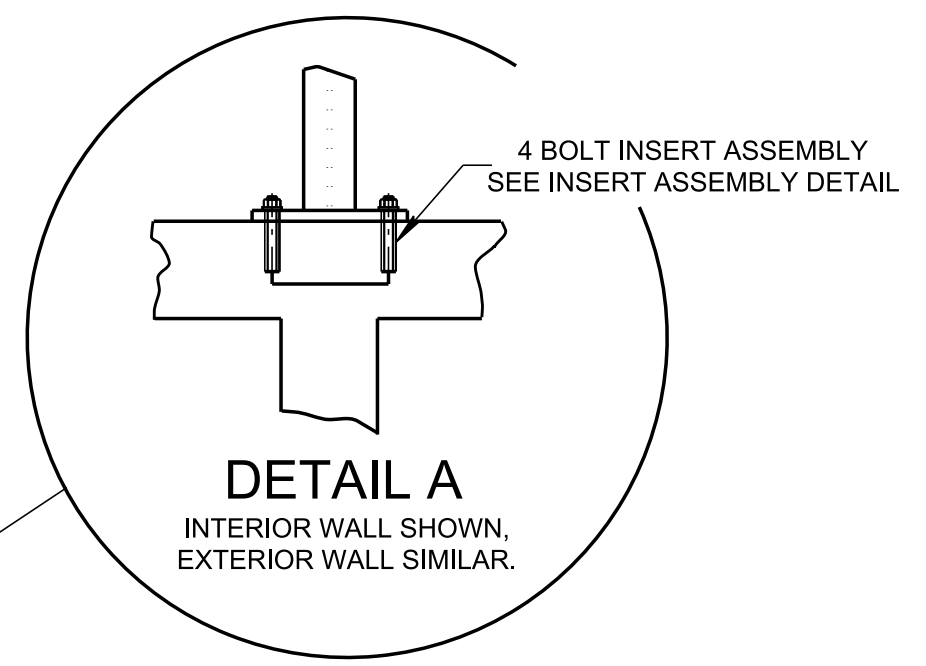
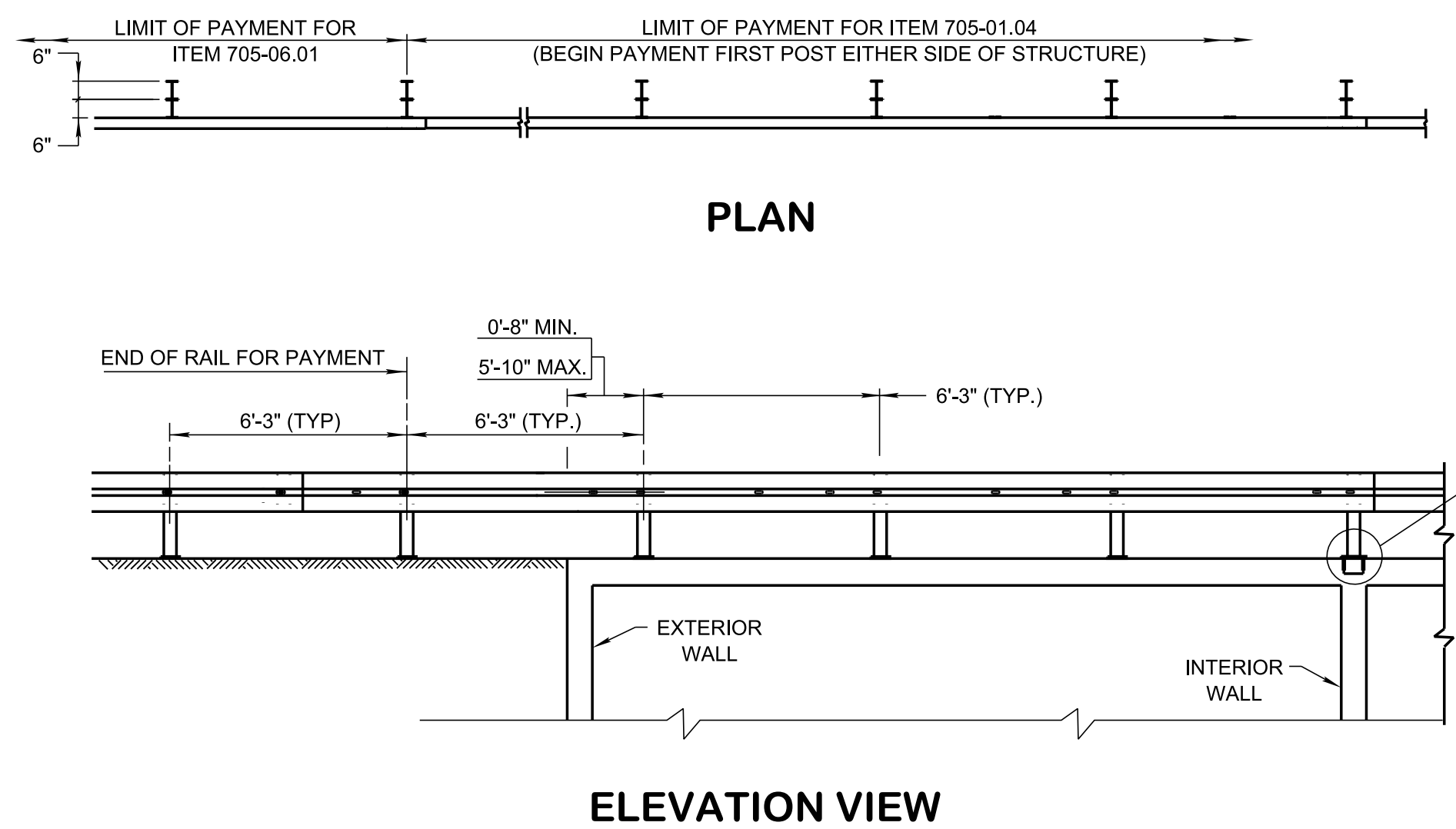
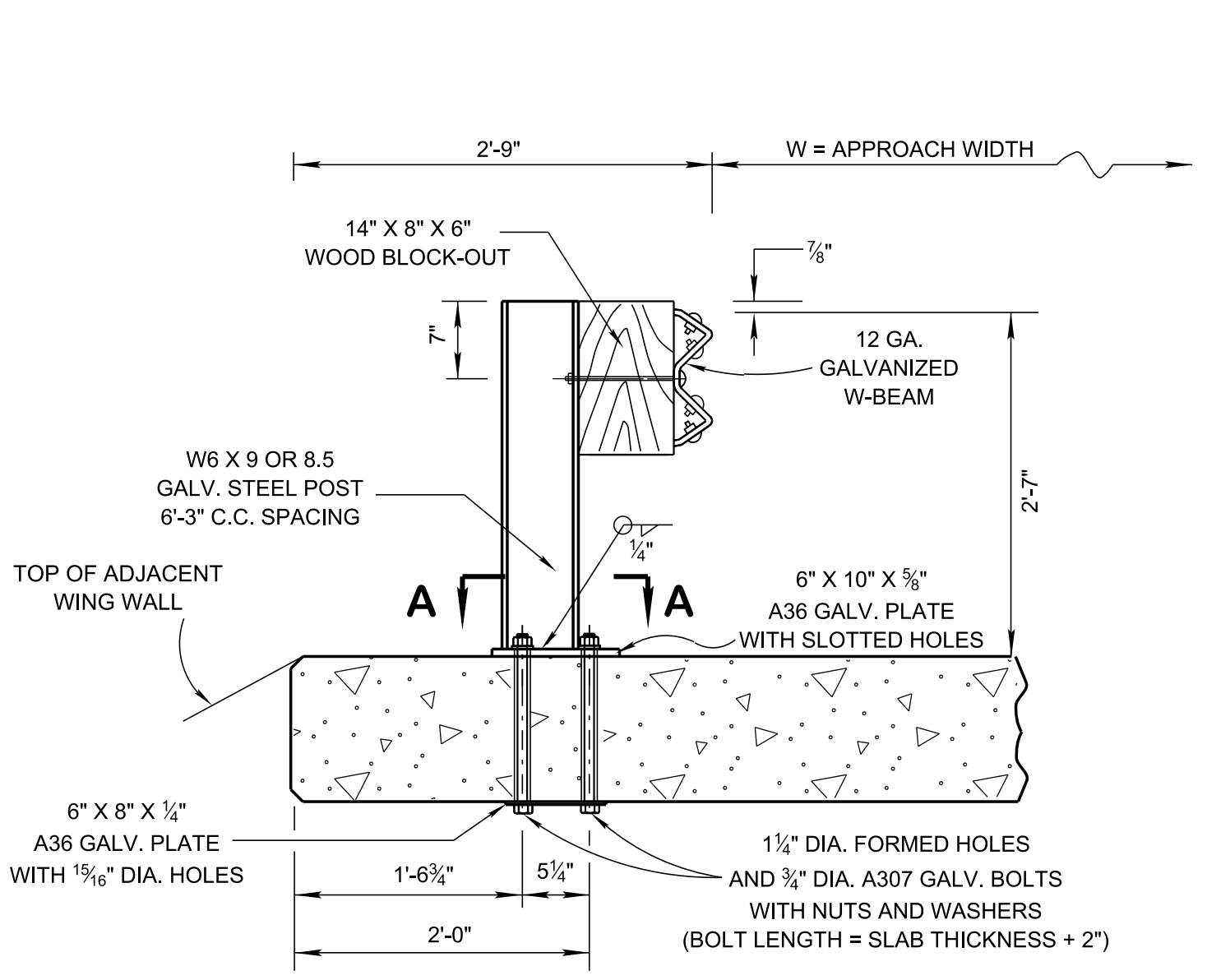


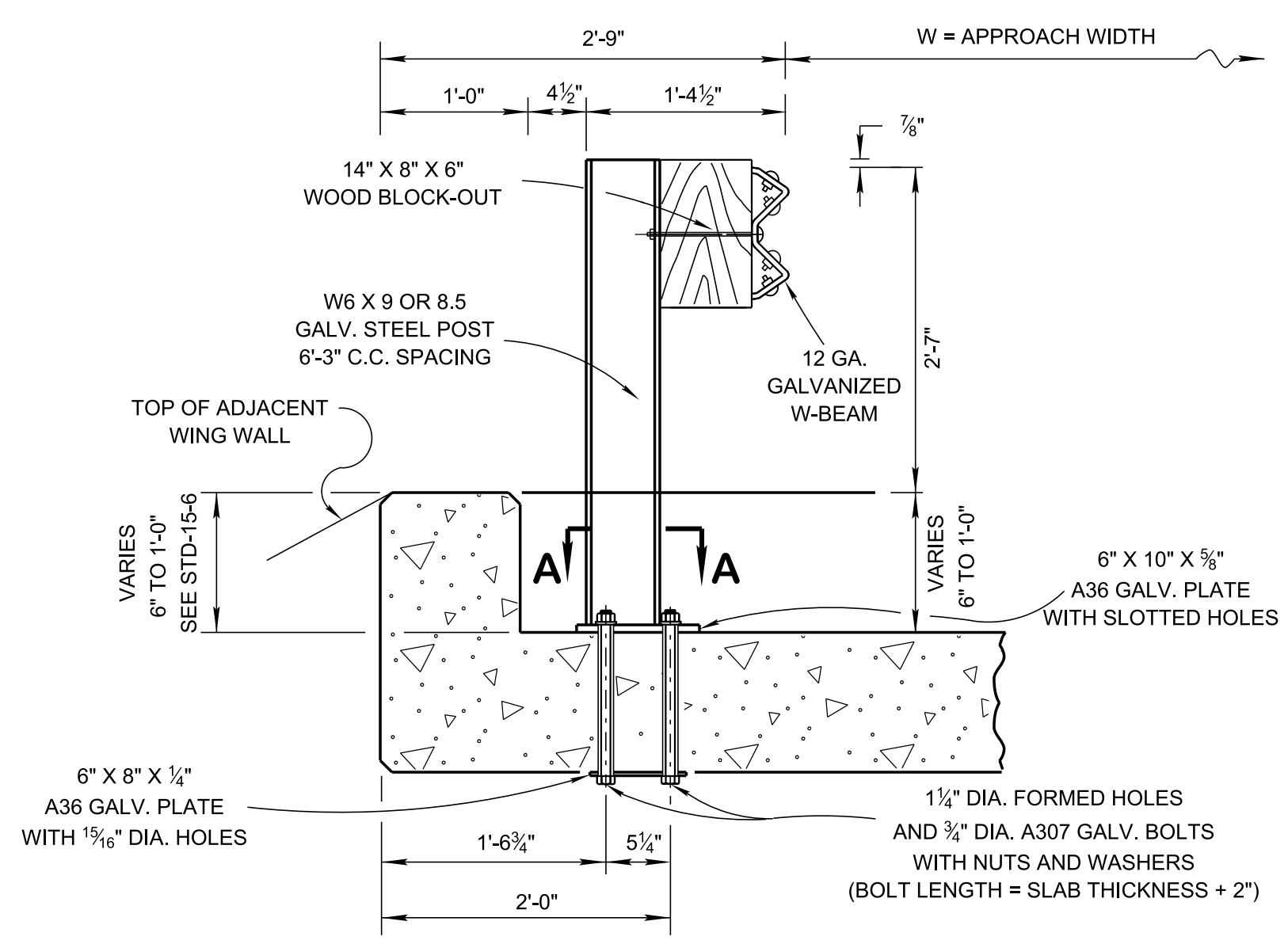
1/24/2022 1:14:24 PM P:\StandDraw\DESIGN STANDARDS\Standards Drawings\Standard Roadway Drawings - CURRENT\In Progress\10-106.00 Safety Design and Guardrails IP\106.06 Guardrail (Special Cases) IP\ISGRS2-2022



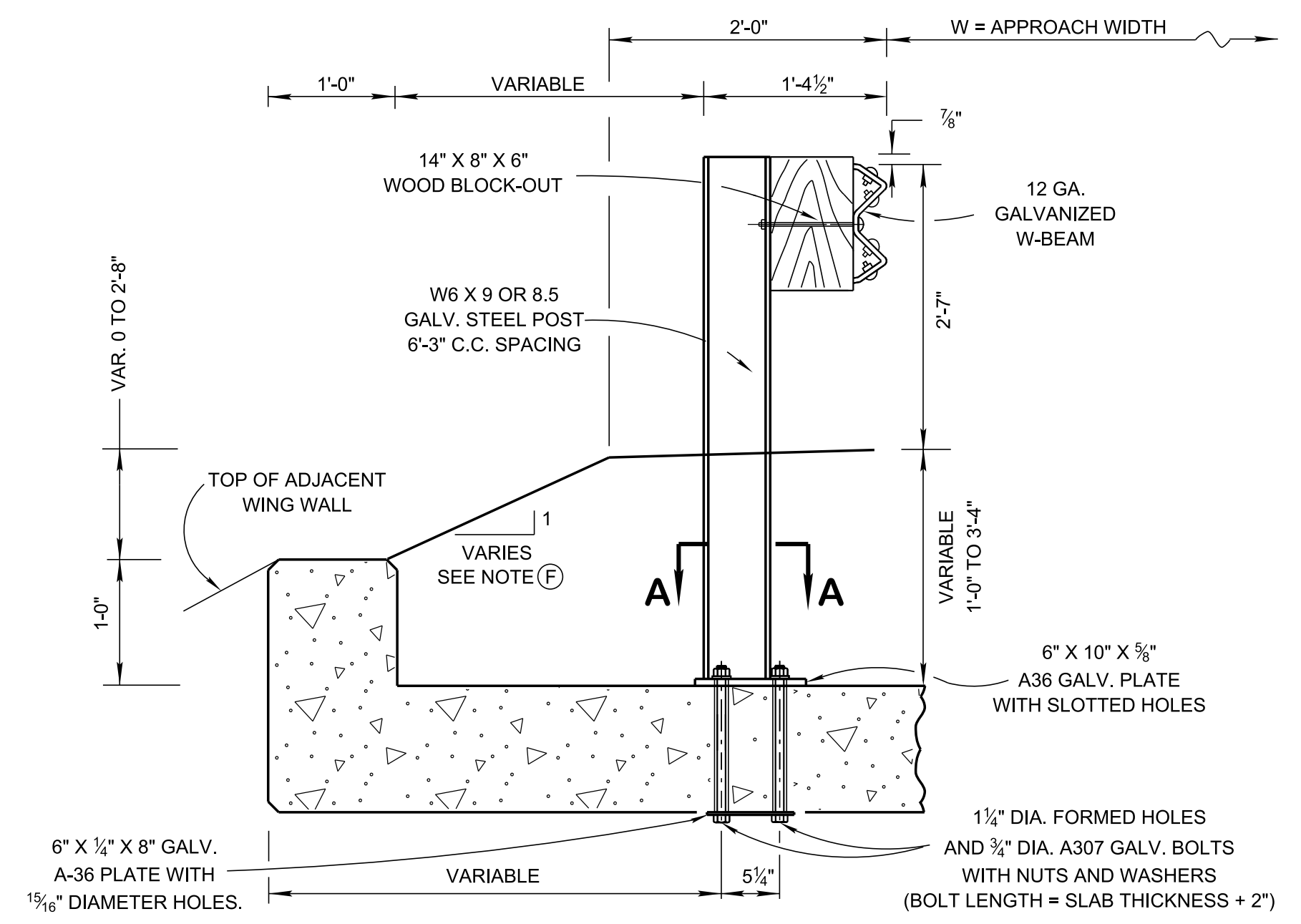
- REV. 5-25-16: CORRECTED WELD DETAIL.
- REV. 7-5-17: CORRECTED STD. DWG. NO'S. ON GENERAL NOTE (B). ADDED GENERAL NOTES (D), (E) AND (F). CHANGED PAY ITEM NUMBER IN DESIGN NOTE (1).
- REV. 06-28-19: REDREW SHEET.
- REV. 06-15-21: REVISED DETAIL A. SWITCHED LABELS ON ALTERNATE DETAIL A.
- REV. 01-28-2022: GENERAL NOTE (C) WAS ADDED.



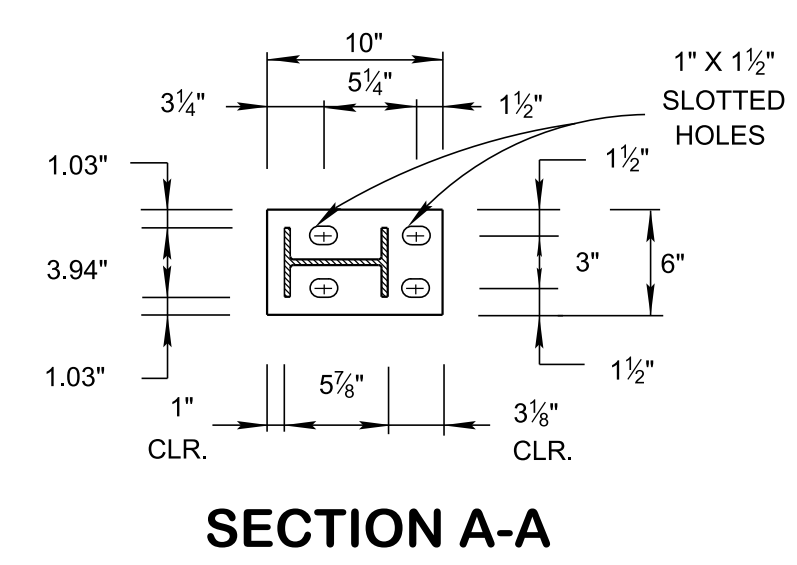
**DETAIL FOR CONCRETE DECK
USED AS A RIDING SURFACE**



**DETAIL FOR CONCRETE DECK
WITH 6" TO 1'-0" OF ROADWAY FILL COVER**



**DETAIL FOR CONCRETE DECK
WITH 1'-0" TO 3'-4" OF ROADWAY FILL COVER**



SECTION A-A

- DESIGN NOTES**
- (1) WHEN DEPTH OF FILL AT FACE OF GUARDRAIL EXCEEDS 3'-4", USE ITEM NUMBER 705-06.01 AS SHOWN ON S-GR31-1 SERIES.
 - (2) DO NOT USE ON PRECAST CONCRETE STRUCTURE WITHOUT PRIOR APPROVAL FROM MANUFACTURERS.
 - (3) THIS RAIL SYSTEM HAS BEEN TESTED AND PASSED BY THE CRITERIA SET FORTH BY AASHTO MASH TEST LEVEL 3, AS DOCUMENTED IN ROADSIDE SAFETY RESEARCH PROGRAM POOLED FUND STUDY NO. TPF-5(114) DATED NOV. 11, 2011.
 - (4) ANY REINFORCING STEEL THAT INTERFERES WITH THE 1 1/4" DIAMETER FORMED HOLES SHALL BE MOVED HORIZONTALLY TO PROVIDE A 1" MINIMUM CLEARANCE TO THE HOLE.

- GENERAL NOTES**
- (A) IN ORDER TO EXPEDITE INSTALLATION, GUARDRAIL POST MAY BE FIELD CUT TO ADJUST THE LENGTH REQUIRED. ALL CUT SURFACES MUST RECEIVE GALVANIZE COATING.
 - (B) FOR DIMENSIONS AND DETAILS NOT SHOWN SEE STANDARD STRUCTURES DRAWING NOS. STD-17-7 AND STD-17-8, AND STANDARD ROADWAY DRAWING S-GR31-1 SERIES.
 - (C) TO BE PAID FOR UNDER ITEM NO: 705-01.04, METAL BEAM GUARD FENCE, PER LF.
 - (D) ANCHOR BOLTS TO BE 7/8" DIA., ASTM A193, GRADE B7. NUTS AND WASHERS TO BE GALVANIZED.
 - (E) INSERT ASSEMBLY TO BE USED FOR CONNECTION OF POSTS OVER WALLS ONLY AND MAY NOT BE USED AS A SUBSTITUTE FOR PLATE ASSEMBLY ELSEWHERE.
 - (F) SLOPE TO MATCH ADJOINING ROADWAY SIDE SLOPE.
 - (G) LOCATIONS WHERE GUARDRAIL ATTACHMENT TO CONCRETE SLAB CANNOT BE ACCOMPLISHED DUE TO SITE CONDITIONS, REFER TO WEAK-POST STANDARD DRAWINGS S-GRS-5 SERIES FOR ALTERNATE ATTACHMENTS.

■ MINOR REVISION -- FHWA APPROVAL NOT REQUIRED

STATE OF TENNESSEE
 STANDARD DRAWING
DEPARTMENT OF TRANSPORTATION

SPECIAL CASE
GUARDRAIL
ATTACHMENT
TO CONCRETE
DECKS