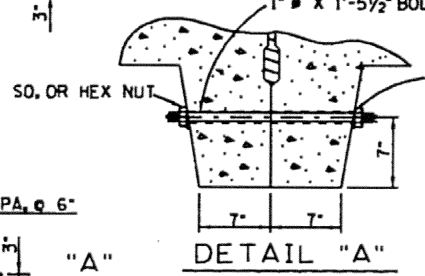
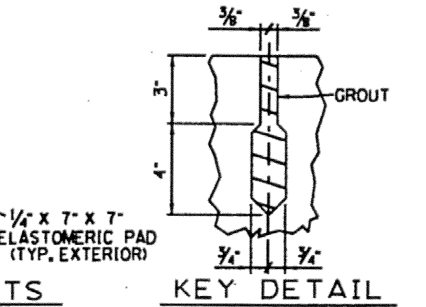
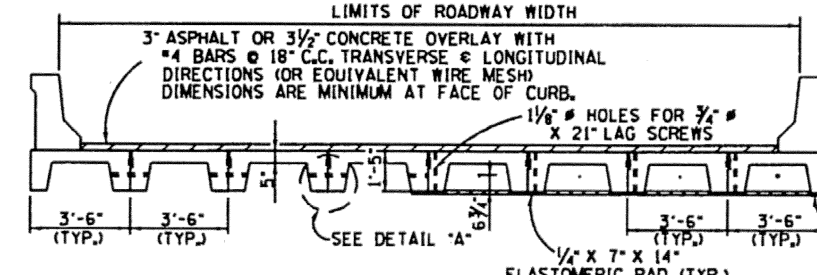
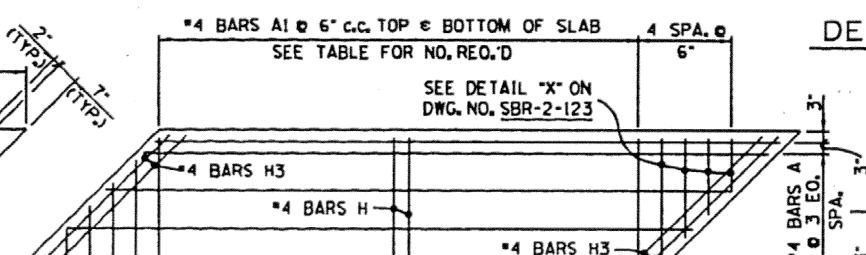
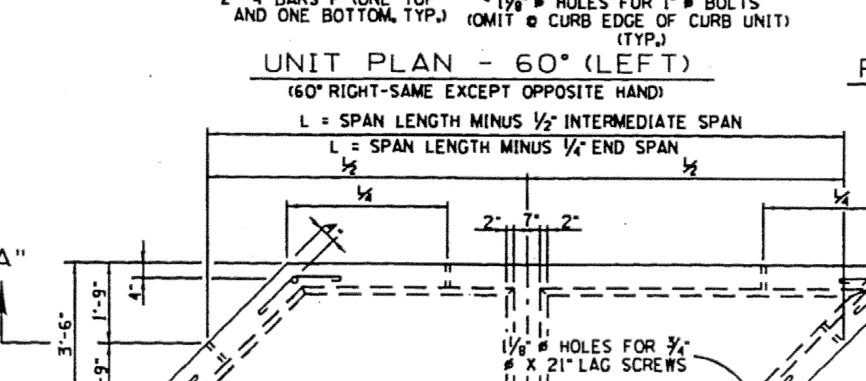
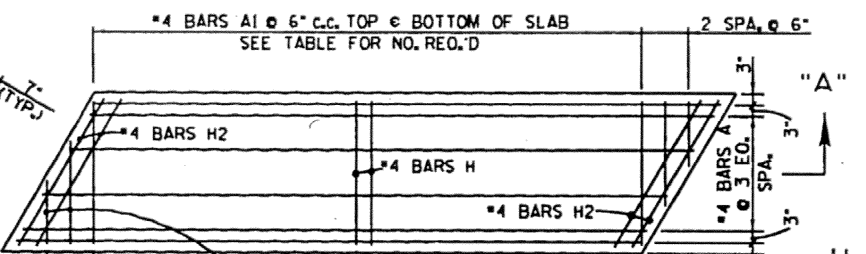
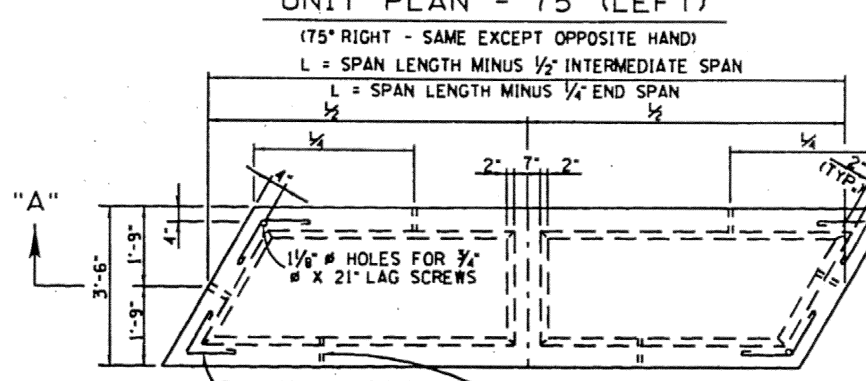
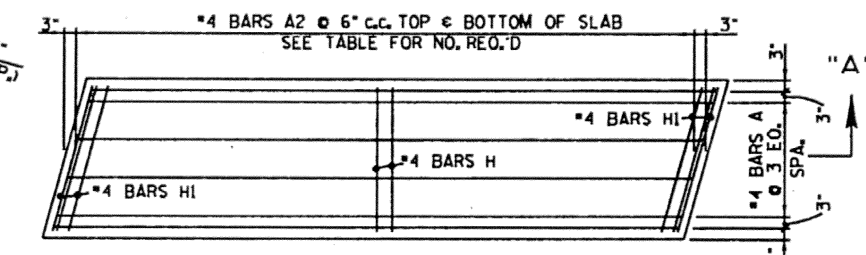
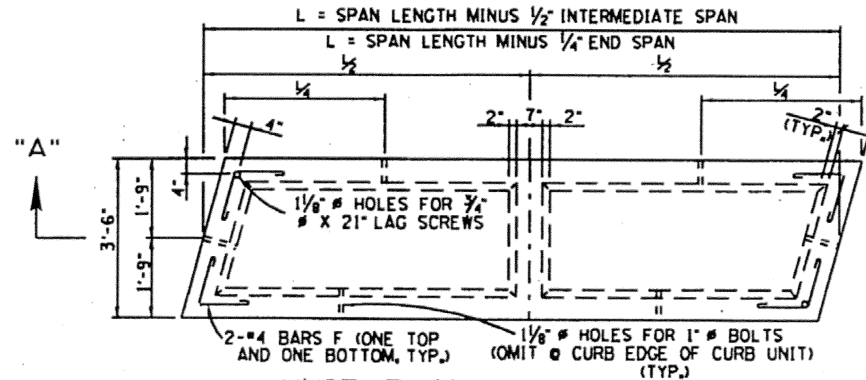
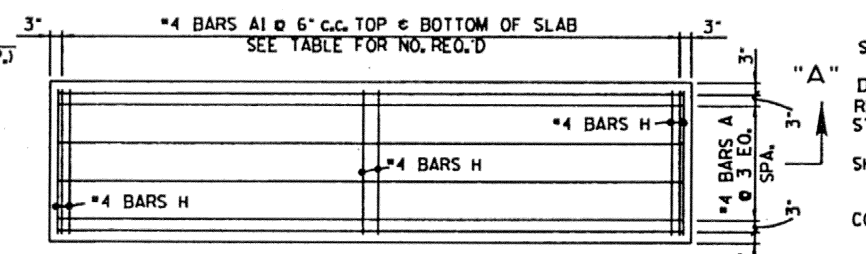
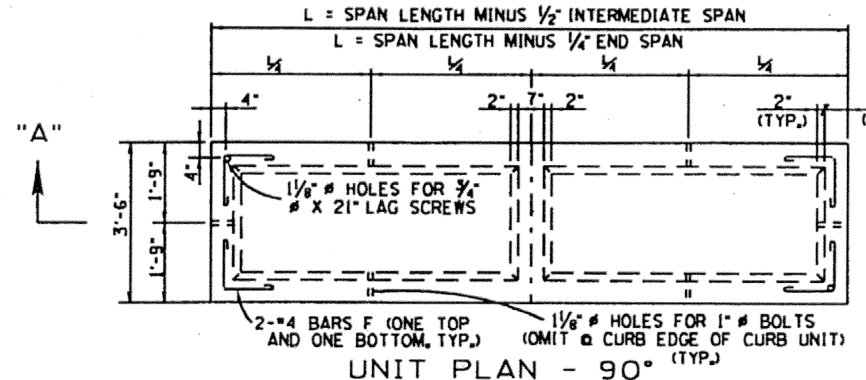


PROJECT NO.	YEAR	SHEET NO.
	1992	

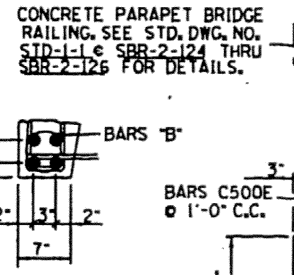
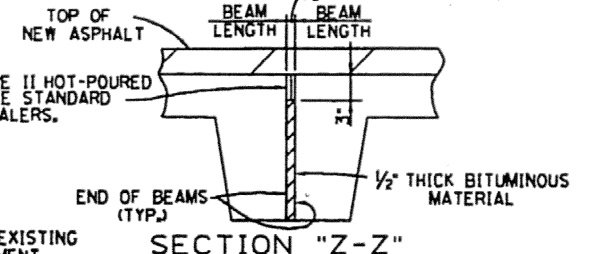
REVISIONS			
NO.	DATE	BY	BRIEF DESCRIPTION
1	2-23-95		REVISED GENERAL NOTES & REMOVED SIGNATURES
2	1-4-96		REVISED BR DRAWING NO. TO SBR DRAWING NO. AND REVISED STD-2-1 TO STD-1-1

GENERAL NOTES

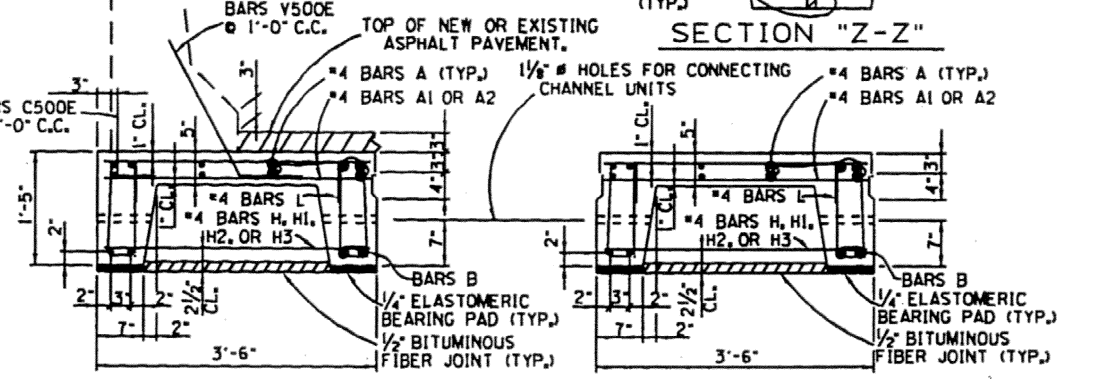
SPECIFICATIONS: STANDARD ROAD AND BRIDGE SPECIFICATIONS OF THE TENNESSEE DEPARTMENT OF TRANSPORTATION. (CURRENT EDITION)
 DESIGN SPECIFICATIONS: AASHTO 1992 EDITION WITH ADDENDA.
 REINFORCING STEEL: SEE THE STANDARD SPECIFICATIONS.
 STRUCTURAL STEEL: SHALL CONFORM TO AASHTO M270 GRADE 36 (ASTM A709 GRADE 36) UNLESS OTHERWISE NOTED.
 SHOP DRAWINGS SHALL BE SUBMITTED ACCORDING TO SPECIAL PROVISION NO. 105A, EXCEPT SHOP DRAWINGS SHALL BE SUBMITTED TO THE HEADQUARTERS BRIDGE INSPECTION AND REPAIR OFFICE IN LIEU OF THE DIVISION OF STRUCTURES.
 CONCRETE: TO BE CLASS "A" (CAST-IN-PLACE), *f'c=3,000 P.S.I. MIN. CONCRETE SHALL BE PLACED IN ACCORDANCE WITH SECTION 604-CONCRETE STRUCTURES OF THE STANDARD SPECIFICATIONS.
 *NOTE: SEE STRENGTH OF CONCRETE TABLES ON DWG. NO. SBR-2-123.



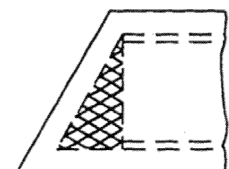
NOTE: IF RECESSED SLOT IS USED, EITHER SQUARE WASHERS 2" X 2" X 3/16" OR STD. STEEL ROUND PLATE WASHER 2 1/2" O.D. X 1/4" MAY BE USED.



TOP 3" OF JOINT TO BE FILLED WITH A TYPE II HOT-POURED ELASTIC TYPE CONCRETE JOINT SEALER, SEE STANDARD SPECIFICATIONS SECTION 905.05, JOINT SEALERS.



NOTE: SEE DETAIL "Y" WHEN (4) FOUR BARS "B" ARE REQUIRED PER STEM OF CHANNEL UNIT.



NOTE: THE FABRICATOR MAY POUR THE ADDITIONAL SECTION OF CONCRETE SHOWN CROSSHATCHED BUT NO ADDITIONAL PAYMENT WILL BE MADE.

B, MINOR REVISION - FHWA APPROVAL NOT REQUIRED

SPECIAL NOTE: ALL 1/8" HOLES FOR 3/4" X 21" LAG SCREWS WITH SQUARE HEAD TO BE CORED 2 1/4" FOR A DEPTH OF 1/4" FOR COUNTERSINKING. COUNTERSUNK HOLES TO BE SEALED OVER, ALL HARDWARE, EXCEPT LAG SCREWS TO BE GALVANIZED.

DESIGNED BY P.B.G. - HMM, DATE 11-91
 DRAWN BY GEORGE CORNIADEL, DATE 12-91
 SUPERVISED BY P.B.G., DATE 12-91
 CHECKED BY MONTY RUFF, DATE 2-92

STATE OF TENNESSEE
 DEPARTMENT OF TRANSPORTATION
 BUREAU OF HIGHWAYS
 DETAILS FOR PRECAST
 SLAB BRIDGE CHANNELS
 SPANS 16'-0" THRU 34'-0"
 SKEWS 90°-75°-60°-45°
 1992