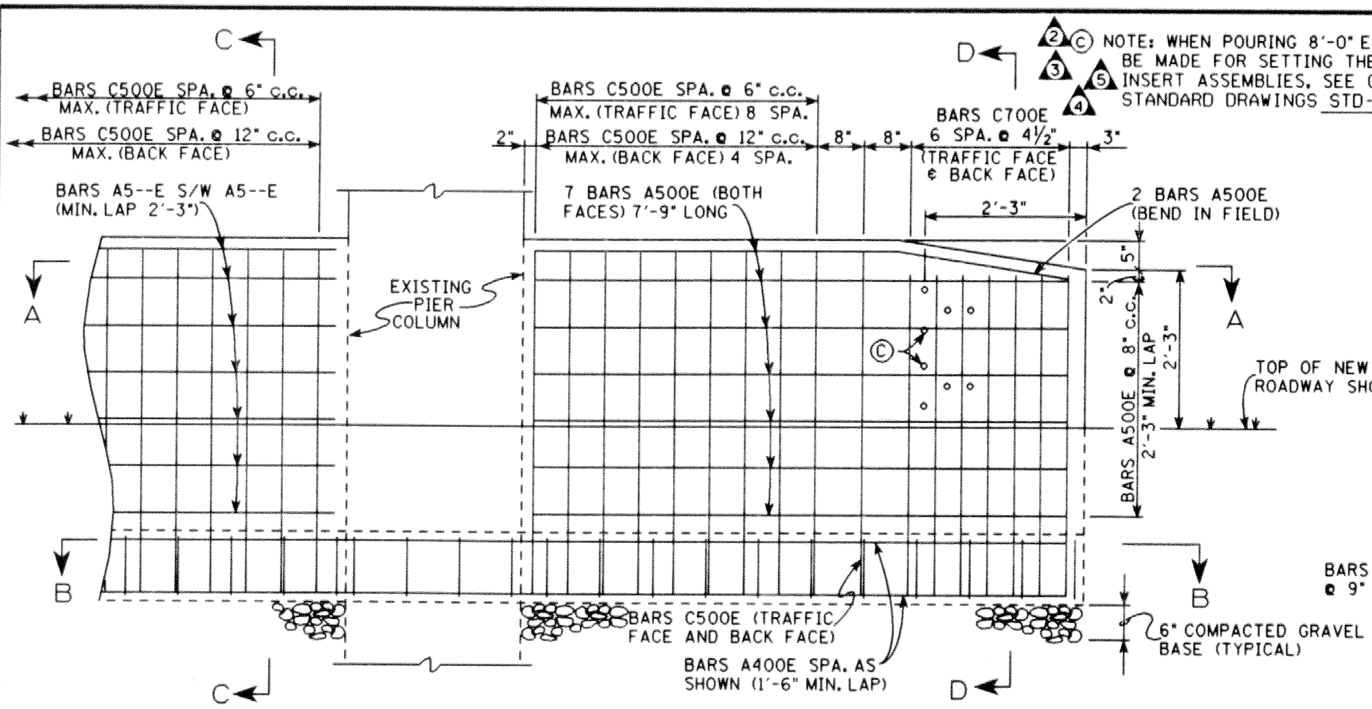
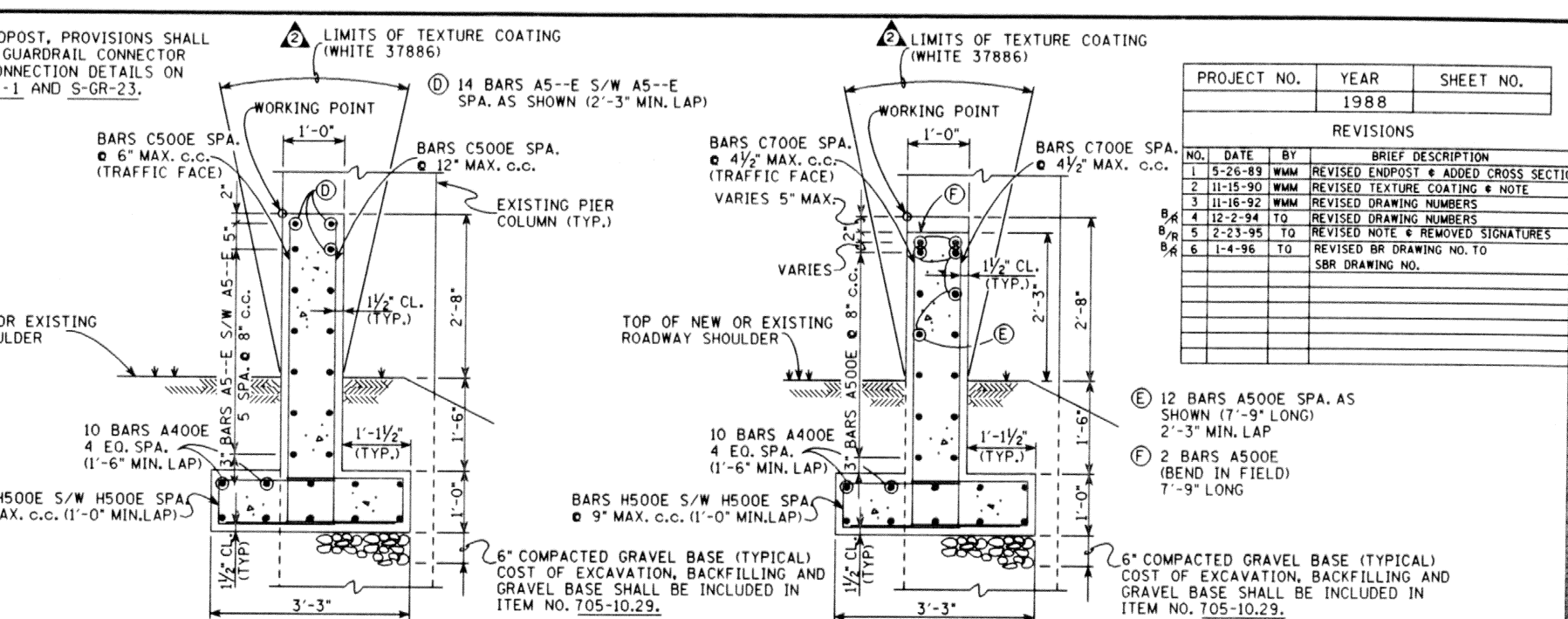


PROJECT NO.	YEAR	SHEET NO.
	1988	

REVISIONS			
NO.	DATE	BY	BRIEF DESCRIPTION
1	5-26-89	WMM	REVISED ENDPOST & ADDED CROSS SECTION
2	11-15-90	WMM	REVISED TEXTURE COATING & NOTE
3	11-16-92	WMM	REVISED DRAWING NUMBERS
4	12-2-94	TO	REVISED DRAWING NUMBERS
5	2-23-95	TO	REVISED NOTE & REMOVED SIGNATURES
6	1-4-96	TO	REVISED BR DRAWING NO. TO SBR DRAWING NO.



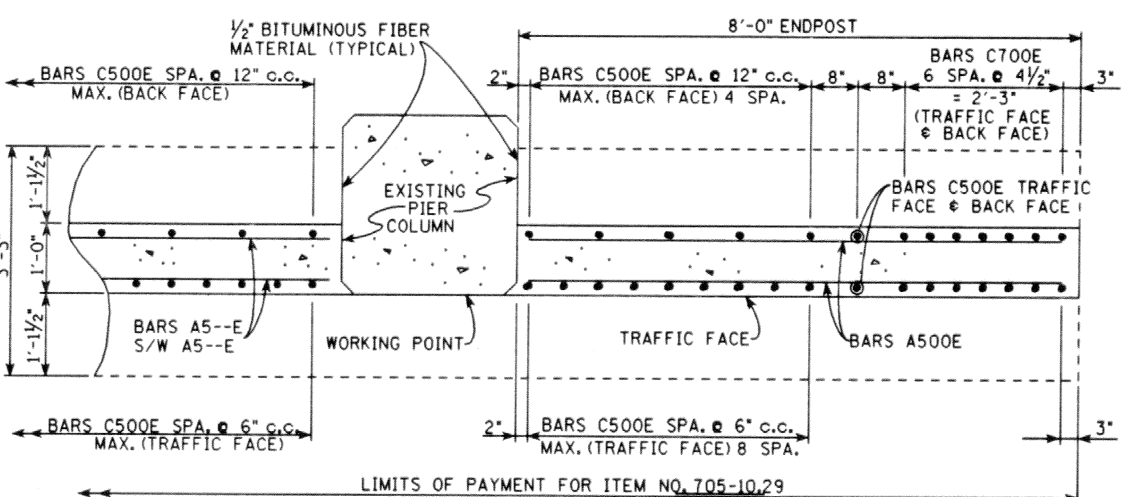
1 TYPICAL ELEVATION SHOWING REINFORCEMENT



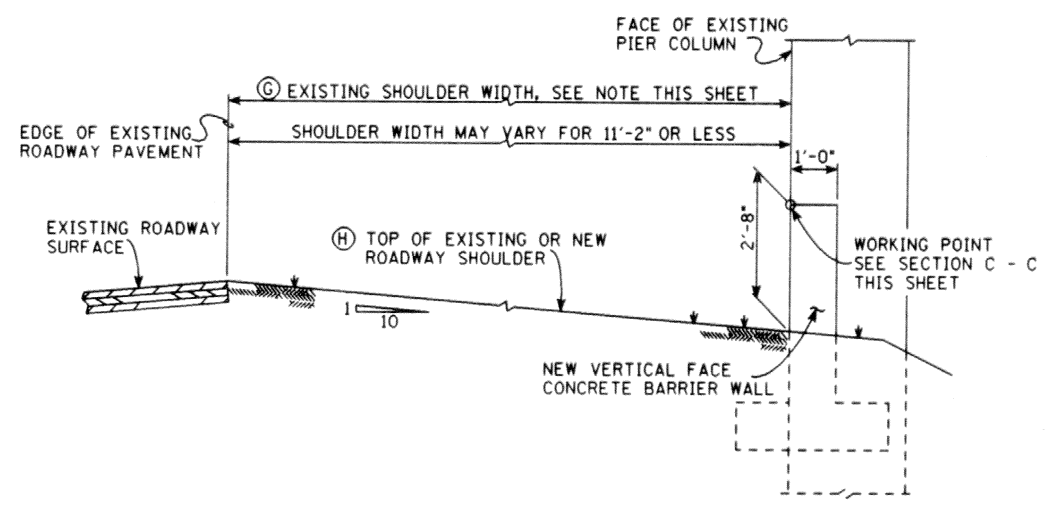
1 SECTION C - C

1 SECTION D - D

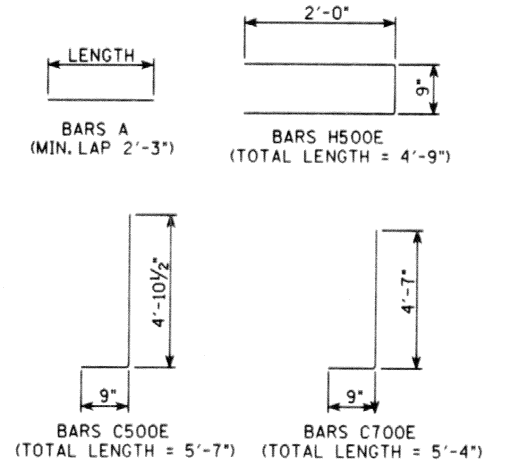
- E 12 BARS A500E SPA. AS SHOWN (7'-9\"/>



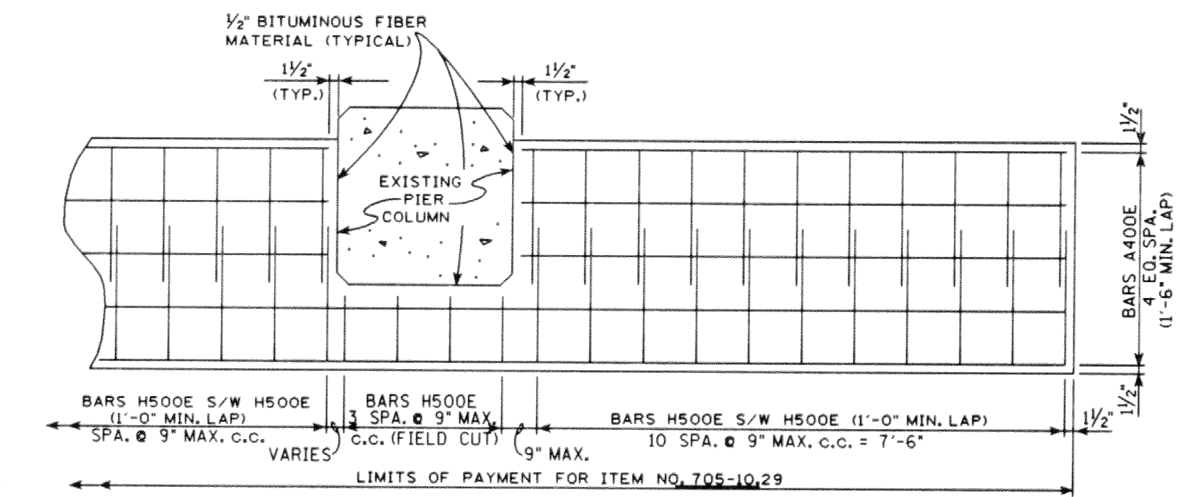
1 SECTION A - A



1 CROSS SECTION SHOWING ROADWAY SHOULDER CLEARANCES FOR NEW VERTICAL FACE CONCRETE BARRIER WALL PIER PROTECTION



BAR BENDS



1 SECTION B - B (SHOWING FOOTING REINFORCING)

- 3 NOTE: DETAILS SHOWN ARE FOR NEW VERTICAL FACE CONCRETE BARRIER WALL PIER PROTECTION WITH EXISTING ROADWAY SHOULDER WIDTHS FROM 11'-2\"/>

MINOR REVISION - FHWA APPROVAL NOT REQUIRED

STATE OF TENNESSEE
DEPARTMENT OF TRANSPORTATION
DETAILS SHOWING
PIER PROTECTION
WITH NEW
VERTICAL CONCRETE
BARRIER
1988

DESIGNED BY _____ DATE _____
DRAWN BY KIM FRANKENFIELD DATE 9-92
SUPERVISED BY GENTRY & McINTURFF DATE 9-92
CHECKED BY McINTURFF DATE _____

DETAILS GRA-29
ITEM NO. 705-10.29
LINEAR FEET