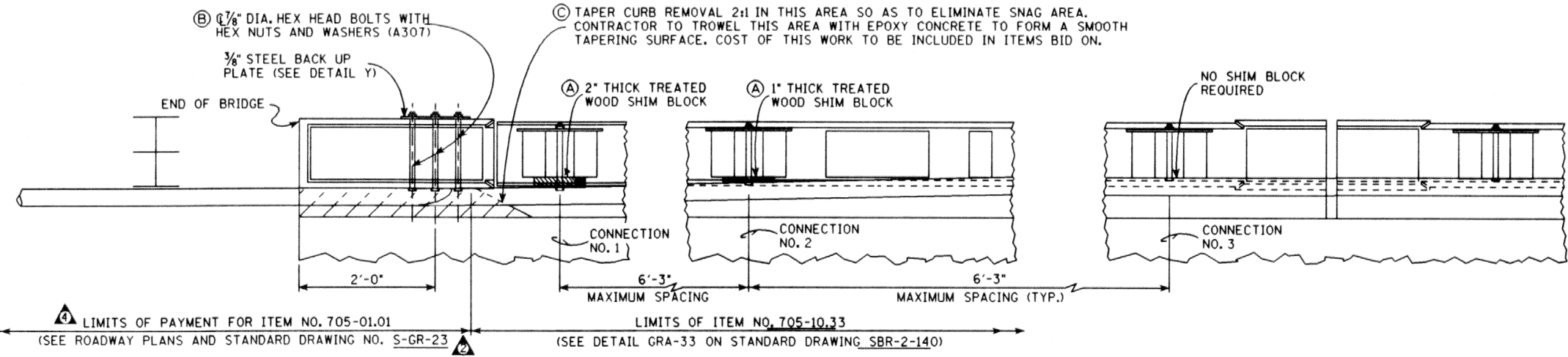


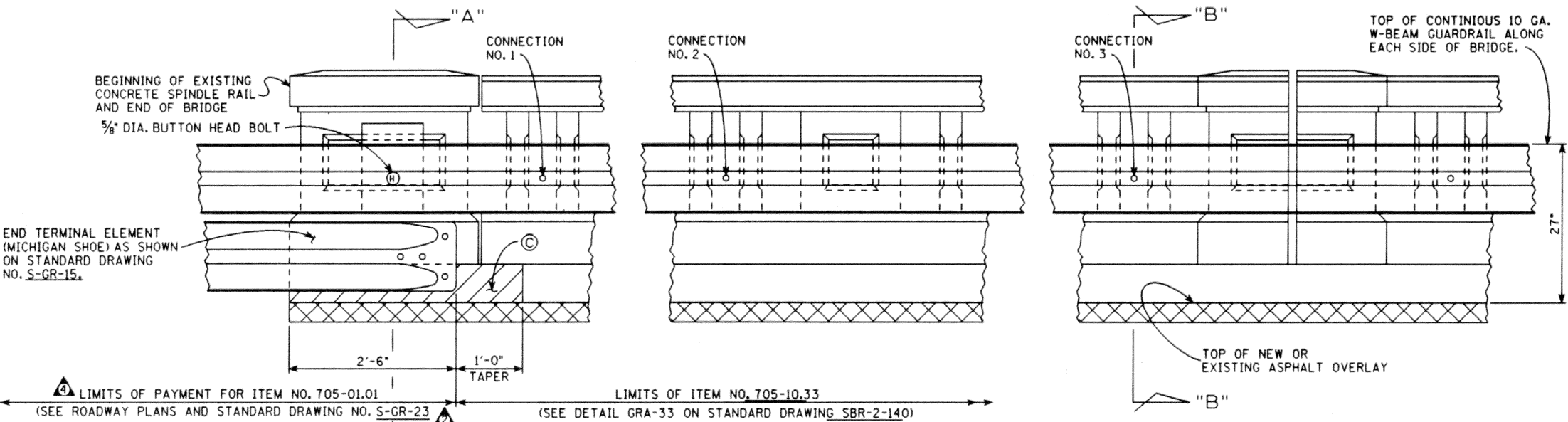
PROJECT NO.	YEAR	SHEET NO.	
	1992		
REVISIONS			
NO.	DATE	BY	BRIEF DESCRIPTION
B/R 1	2-21-95	T.O.	REMOVED SIGNATURES
B/R 2	4-4-95	T.O.	CHANGED STANDARD DRAWING NO.
B/R 3	1-4-96	T.O.	REVISED BR DRAWING NO. TO SBR DRAWING NO.
B/R 4	11-05-01	WS	REVISED ITEM NO.S

GENERAL NOTES

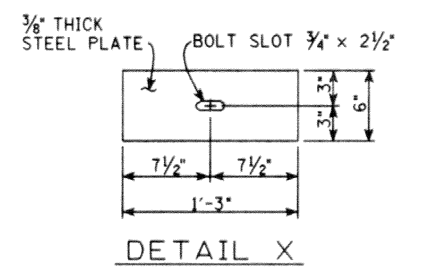
- SPECIFICATIONS:** STANDARD ROAD AND BRIDGE SPECIFICATIONS OF THE TENNESSEE DEPARTMENT OF TRANSPORTATION. (CURRENT EDITION)
- CONCRETE:** TO BE EPOXY, THE CONTRACTOR MAY OBTAIN A LIST OF ACCEPTABLE BRANDS OF EPOXY CONCRETE FROM THE TENNESSEE DEPARTMENT OF TRANSPORTATION, DIVISION OF MATERIALS AND TEST.
- NON-PAY ITEMS:** ONLY ITEMS SHOWN ON THE PROPOSAL AS PAY ITEMS WILL BE PAID FOR. COMPENSATION FOR ALL LABOR, MATERIALS, TOOLS, EQUIPMENT, AND INCIDENTALS FOR THE ENTIRE CONTRACT SHALL BE INCLUDED IN THE PRICE FOR PAY ITEMS.
- (A) DENOTES:** A 2" THICK TREATED TIMBER SHIM BLOCK SHALL BE USED AT CONNECTION NO. 1, WITH A 1" THICK TREATED TIMBER SHIM BLOCK AT CONNECTION NO. 2. STARTING WITH CONNECTION NO. 3, NO TIMBER SHIM BLOCKS WILL BE REQUIRED ON FRONT FACE OF GUARDRAIL. TYPICAL AT EACH END OF BRIDGE. SEE PLAN THIS SHEET SHOWING WOOD SHIM BLOCKS.
- (B) NOTE:** HOLES FOR 3/8" DIA. BOLTS TO BE DRILLED WITH A HIGH SPEED DRILL. THE DRILL BIT SHALL BE CAPABLE OF DRILLING THROUGH EXISTING REINFORCING BARS AND CONCRETE. THE DIAMETER OF THE HOLES SHALL BE 1/4" (+) LARGER THAN THE BOLTS. COST OF DRILLING TO BE INCLUDED IN ITEMS BID ON.
- NOTE:** DETAILS FOR GUARDRAIL SHALL CONFORM TO STANDARD DRAWING S-GR-SERIES, EXCEPT FOR DETAILS SHOWN ON THIS SHEET.
- NOTE:** THE COST OF ALL NEW GUARDRAIL, BOLTS, WOOD SHIM BLOCKS, STEEL PLATES, DRILLING, AND ALL LABOR AND MATERIALS NECESSARY TO COMPLETE THE NEW GUARDRAIL CONNECTIONS AS SHOWN IN THESE DETAILS SHALL BE INCLUDED IN GUARDRAIL ITEMS BID ON.
- NOTE:** ALL WOOD SHIM BLOCKS SHALL BE CUT FROM PRESSURE TREATED TIMBER. SEE TENNESSEE STANDARD SPECIFICATIONS SECTION 911 - TIMBER AND TIMBER PILES.
- (C) NOTE:** COST OF CHIPPING AND REMOVING PORTIONS OF THE EXISTING 6" CURBING AND TROWELING OF EPOXY CONCRETE TO BE INCLUDED IN ITEMS BID ON. ALL WORK MUST MEET WITH THE FULL APPROVAL OF THE ENGINEER.
- NOTE:** PROFILE OF NEW GUARDRAIL SHALL CONFORM TO THE EXISTING ROADWAY GRADE.
- NOTE:** ALL DETAILS SHOWN ARE TYPICAL AT EACH CORNER AND ALONG THE EXISTING CONCRETE SPINDLE BRIDGE RAIL.
- NOTE:** THE CONTRACTOR MAY OBTAIN A LIST OF ACCEPTABLE BRANDS OF EPOXY CONCRETE FROM THE TENNESSEE DEPARTMENT OF TRANSPORTATION, DIVISION OF MATERIALS AND TESTS.



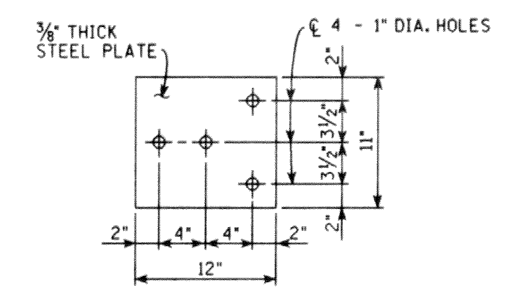
PLAN OF EXISTING CONCRETE SPINDLE RAIL



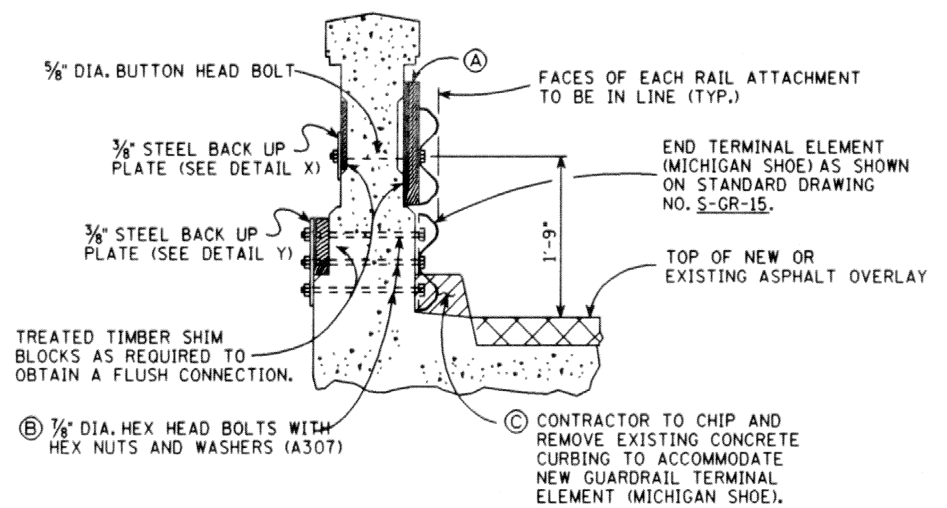
ELEVATION OF EXISTING CONCRETE SPINDLE RAIL



DETAIL X

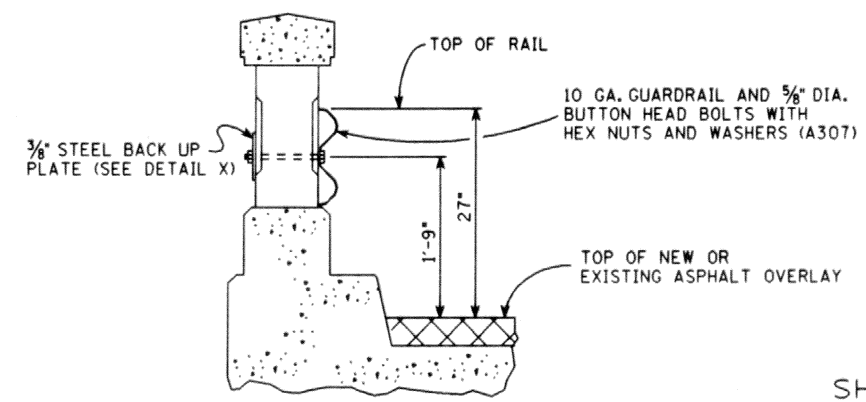


DETAIL Y



SECTION "A"-"A"

FOR ADDITIONAL CONNECTION DETAILS AT BRIDGE END SEE STANDARD DRAWING NO. S-GR-23



SECTION "B"-"B"

FOR ADDITIONAL CONNECTION DETAILS SEE DETAIL GRA-33, ITEM NO. 705-10,33, ON STANDARD DRAWING NO. SBR-2-140.

B/R MINOR REVISION - FHWA APPROVAL NOT REQUIRED

STATE OF TENNESSEE
DEPARTMENT OF TRANSPORTATION

STANDARD
SHOWING DETAILS FOR ATTACHING
NEW GUARDRAIL AT EXISTING
BRIDGE END AND ALONG EXISTING
BRIDGE RAIL
1992

DESIGNED BY MCINTURFF DATE 9-92
DRAWN BY K.L. FRANKENFIELD DATE 9-92
SUPERVISED BY GENTRY & MCINTURFF DATE 9-92
CHECKED BY MCINTURFF DATE 9-92