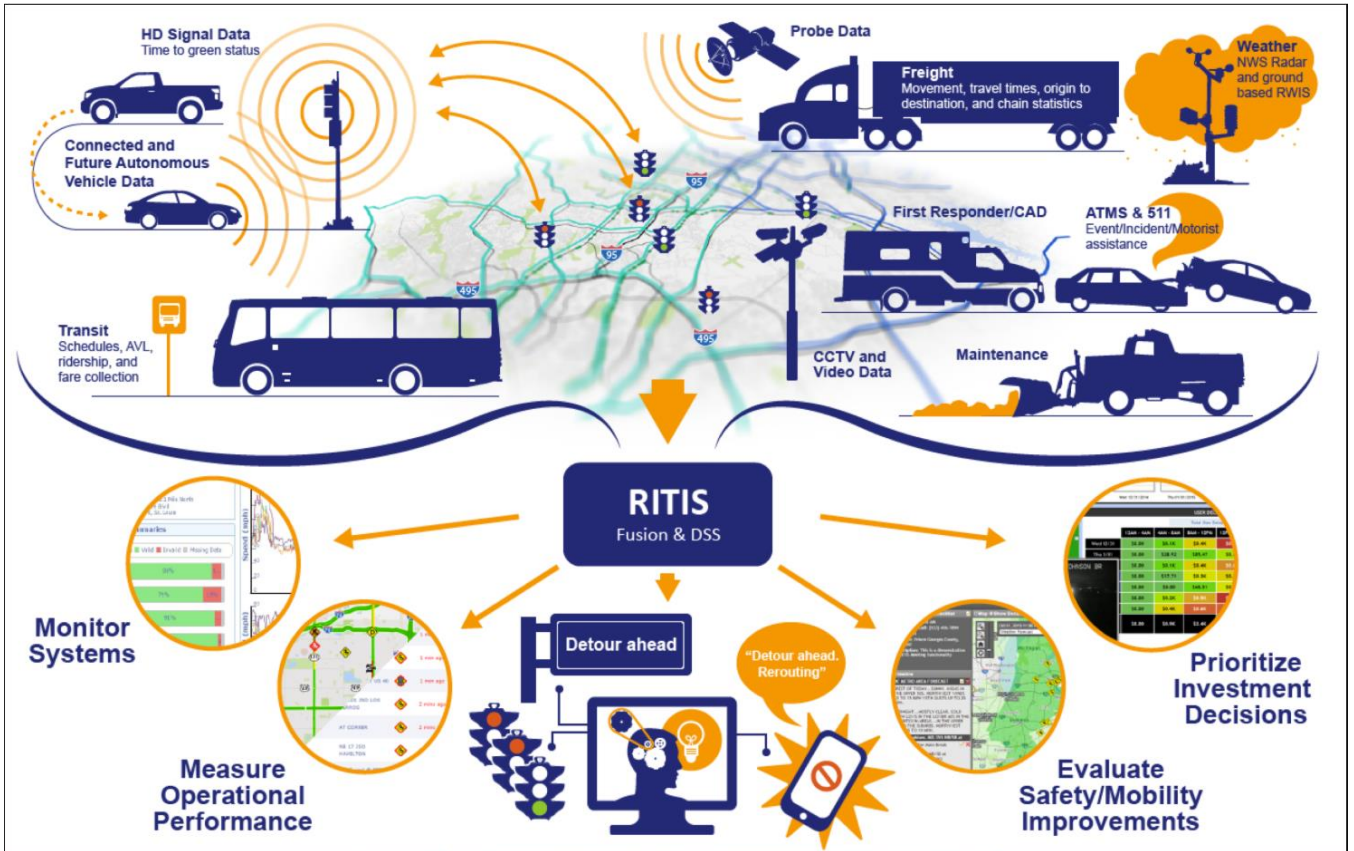


Probe Data Information

Beginning May 2020, TDOT purchased access to Live Inrix Probe Data and the Ritis Probe Data Analytics Suite that included historical data back to May 2017. For an introduction into Ritis (<https://www.ritis.org/intro>).



REGISTRATION/ACCESS TO RITIS AND PROBE DATA ANALYTICS:

Agencies and consultants registering will need to take the following steps:

- Request an account at <https://ritis.org/register/>
- Access to RITIS is approved based on email domain; we immediately approve credentials for any email domains from @tn.gov or other government entity within the State of Tennessee
- Consultants will need some additional verification after their account request is submitted in order to verify that they are working with TDOT on a project.
 - In order to get access to PDA Suite, one person from each organization or consulting firm will need to complete a data use agreement (DUA). We have prepared the DUA in an online DocuSign form that can be accessed and completed [here](#). Once the DUA is reviewed and approved, we will activate an organization's respective users.
- If an organization would also like access to NPMRDS Analytics, there is a separate data sharing agreement (DSA) that they can complete here: <https://npmrds.ritis.org/dsa>
- Any challenges with this process (support@ritis.org).

REGISTRATION/ACCESS TO Inrix Live Probe data:

- VPP Quick Start Guide (includes Data Use Agreement Steps): <https://i95coalition.org/wp-content/uploads/2015/02/I-95-CC-VPP-II-Quick-Start-Sheet-08oct2019.pdf?x70560>
- Any challenges with this (support@inrix.com).