



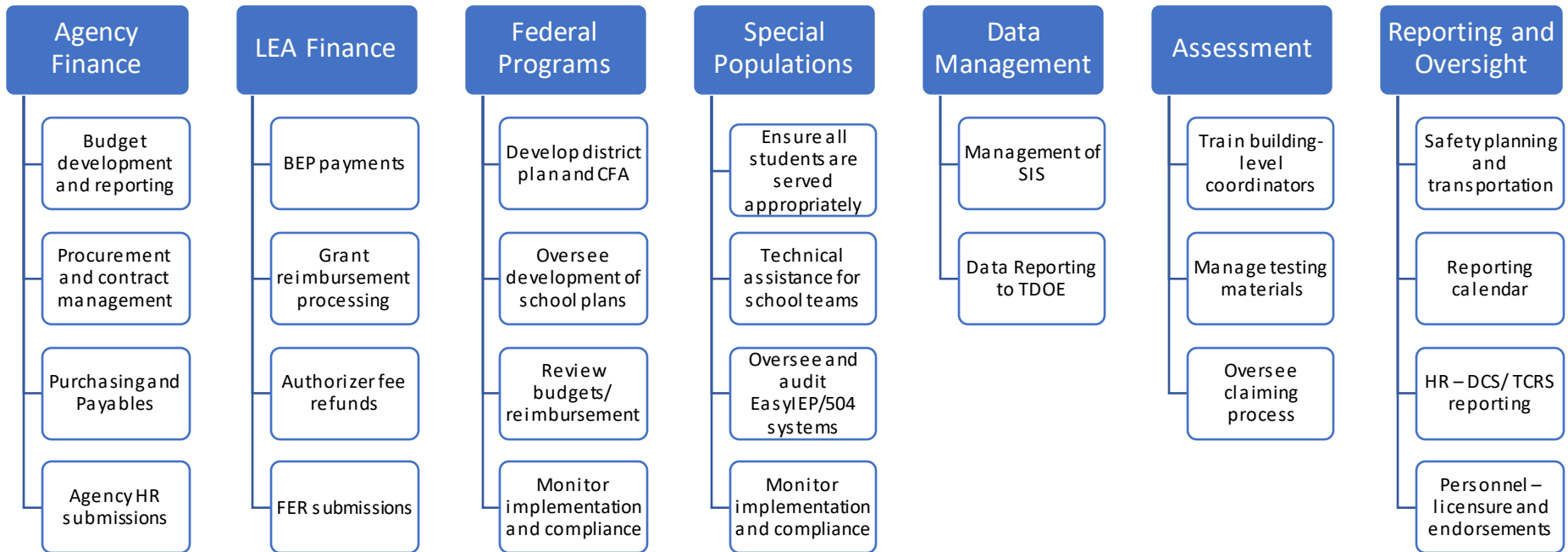
TENNESSEE

PUBLIC CHARTER SCHOOL COMMISSION

**LEA OPERATIONS
UPDATE**

OCTOBER 12, 2021

LEA WORKSTREAMS



OPERATIONS UPDATE

- Finance
 - Fiscal Programs Manager hired
 - Updated reimbursement processes and procedures to reflect new staffing and expanded responsibilities related to ESSER 3.0
 - BEP payments processed and paid for August and September
 - All documentation for FY22 grant budgets and reimbursement submission updated and finalized



OPERATIONS UPDATE

- Federal Programs
 - Reviewed and provided feedback on all school plans in InformTN
 - Consolidated Funding Application completed, submitted, and fully approved by July 1
 - Comprehensive ESSER LEA Plan and ESSER 3.0 spending plan submitted
 - Title I information and requirements communicated to schools, including parents right to know notifications
 - Supporting schools on any licensure/endorsement issues
- Special Populations
 - Providing ongoing technical assistance to schools on Easy IEP and Ellevation entry and transfers
 - Began regular check ins and training with school staff
 - Quarter 1 monitoring



OPERATIONS UPDATE

- Data Management
 - Providing technical assistance to schools on PowerSchool
 - Meetings held to troubleshoot any issues with data pulls with schools
- Assessment
 - Working with ACT/TDOE/Bluff City HS to prepare for a successful fall ACT testing
 - Challenges with the SBE -> TPCSC transition on ACTs side
 - Participating in ongoing assessment training
- Reporting and Oversight
 - All DCS checks completed for staff
 - Completed all personnel checks for licensure and endorsement
 - Regular reporting calendar check ins held regularly (at least monthly) with each school



COVID REPORTING

- The TDOE relaunched the District Information Dashboard for the 2021-22 school for reporting on COVID counts in schools/districts.
- We are collecting the following information from our schools:
 - # confirmed student COVID cases
 - # confirmed staff COVID cases
 - # isolated or quarantined student and staff members
 - Operational changes or other required interventions being used (i.e. remote learning for virtual students, waivers, etc.)
- Data will be updated weekly on a go forward basis





TENNESSEE

PUBLIC CHARTER SCHOOL COMMISSION