

Obion River Conservation Opportunity Area



The Obion River Conservation Opportunity Area (COA) already contains several state lands that provide habitat for numerous priority species including the crawfish frog, bald eagle, cerulean warbler, and sandhill crane. This area consists of bottomland hardwood forests, swamps, oxbows, sloughs, and agricultural fields. Much of the land surrounding the Obion River has been cleared and drained for agricultural use. Gooch Wildlife Management Area is one of the few areas where the bottomland timber remains. Also, the Obion and most of its tributaries have been channelized.

TWRA will consider future land acquisitions in this COA for watershed protection, critical habitat protection, habitat restoration, streambank stabilization, and planting of bottomland hardwoods and buffer strip along the river. TWRA will also seek partnerships with other agencies and interested landowners to implement many of the management strategies on private lands within the COA.

Public Lands within the COA

Bean Switch Refuge, Big Cypress Tree State Natural Area, Glover Wetland, Gooch Wildlife Management Area (WMA), Harts Mill Wetland, Hop-In Refuge, Jarrell Switch Refuge, Maness Swamp Refuge, Obion River WMA, Three River WMA



This area consists of bottomland hardwood forests, swamps, oxbows, sloughs, and agricultural fields.



Top to bottom: Mud Snake - Rob Colvin, TWRA; Channelized stream - Rob Colvin, TWRA; Lower Obion River aerial - Damon Hollis, TWRA/ next page: [Taylor and Murry Moore](#) - two farmers with conservation land along the Obion River - Mark Dorsett, USDA

Obion River Conservation Opportunity Area

Partnerships

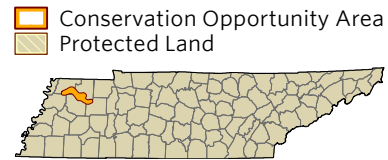
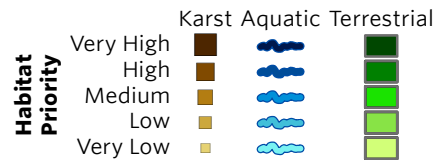
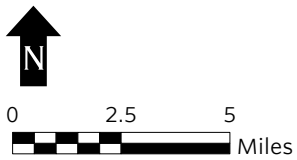
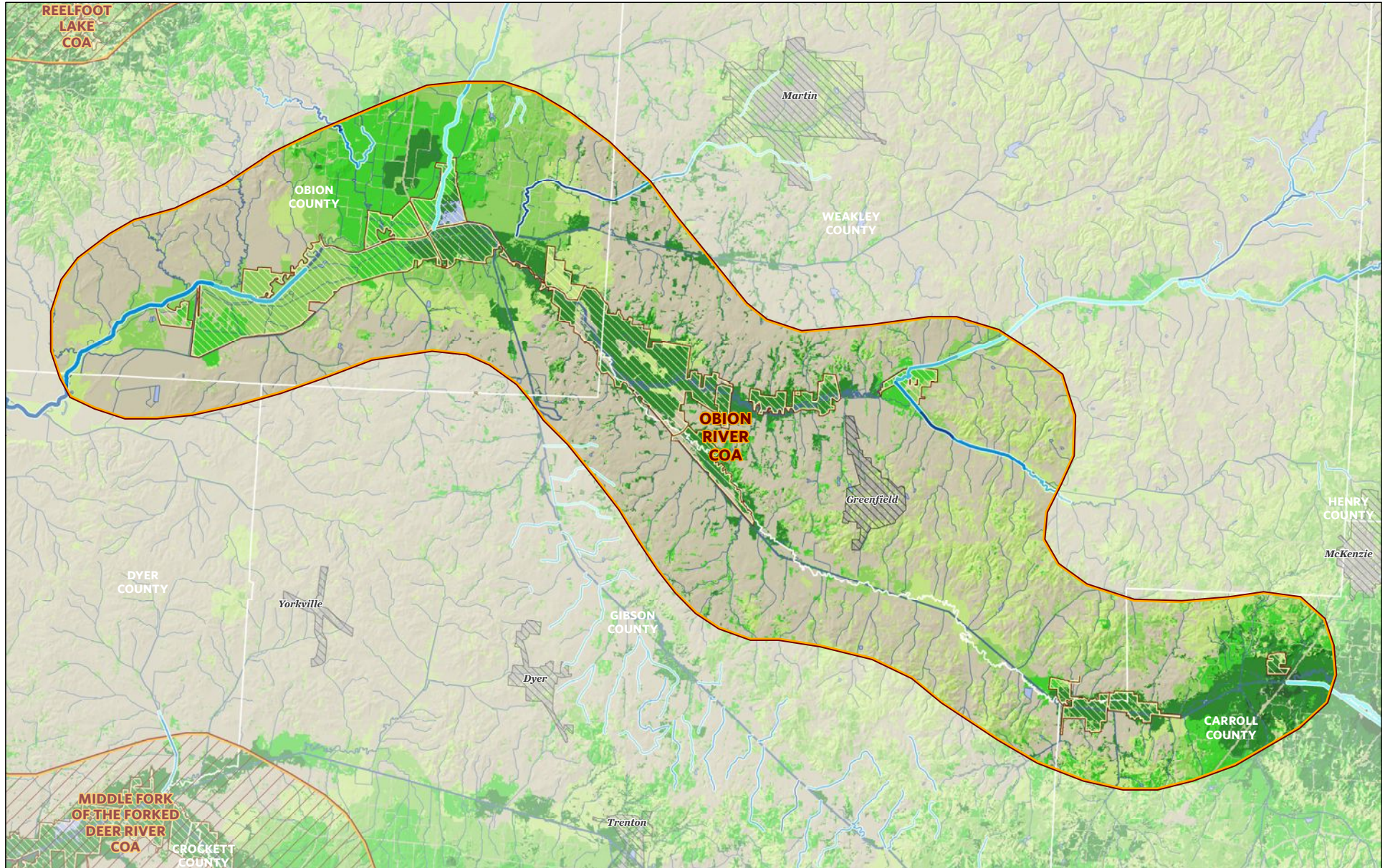
TWRA will develop and foster partnerships with the US Fish & Wildlife Service, Tennessee Department of Environment and Conservation, The Nature Conservancy, Tennessee Ornithological Society, Natural Resources Conservation Service/National Water Quality Initiative/Mississippi River Basin Initiative, Farm Bureau, Tennessee Department of Forestry, Ducks Unlimited, Cooperative Extensions, universities, various other institutions, and local governments.



Desired Change	Units
+ Increase the application of Best Management Practices to benefit GCN species and habitats on private lands using government funded incentive programs	number
+ Restore acres and stream miles of bottomland hardwood forest by converting former agriculture lands.	acres/miles
+ Restore river cane corridors.	acres
+ Increase mudflat and moist soil habitat on wildlife refuges through enhanced water management to provide habitat for migrating birds and Mississippi kites	acres
+ Create or improve buffers around tributaries and a sediment retention basin to reduce sediment load and runoff of contaminants into the lake.	acres
✓ Protect existing riparian zones and bottomland hardwood forests.	acres
+ Encourage municipal and county governments to adopt zoning ordinances that limit or regulate development within critical units of aquatic, subterranean, and terrestrial habitats.	plans

To learn more about the Obion River Conservation Opportunity Area, please contact: Rob Colvin, Wildlife Diversity Coordinator, Region 1 (731) 423-5725

Obion River Conservation Opportunity Area



OBION RIVER COA GCN SPECIES (TN)	
Taxa group	Scientific & Common names
Amphibian	<i>Hyla versicolor</i> (Gray Treefrog)
Bat	<i>Corynorhinus rafinesquii</i> (Rafinesque's Big-eared Bat)
Bat	<i>Myotis austroriparius</i> (Southeastern Bat)
Bird	<i>Accipiter striatus</i> (Sharp-shinned Hawk)
Bird	<i>Ammodramus henslowii</i> (Henslow's Sparrow)
Bird	<i>Ammodramus leconteii</i> (LeConte's Sparrow)
Bird	<i>Ammodramus savannarum</i> (Grasshopper Sparrow)
Bird	<i>Anas rubripes</i> (American Black Duck)
Bird	<i>Botaurus lentiginosus</i> (American Bittern)
Bird	<i>Calidris himantopus</i> (Stilt Sandpiper)
Bird	<i>Calidris mauri</i> (Western Sandpiper)
Bird	<i>Calidris pusilla</i> (Semipalmated Sandpiper)
Bird	<i>Caprimulgus carolinensis</i> (Chuck-will's-widow)
Bird	<i>Chaetura pelagica</i> (Chimney Swift)
Bird	<i>Chordeiles minor</i> (Common Nighthawk)
Bird	<i>Circus cyaneus</i> (Northern Harrier)
Bird	<i>Colinus virginianus</i> (Northern Bobwhite)
Bird	<i>Empidonax minimus</i> (Least Flycatcher)
Bird	<i>Empidonax traillii</i> (Willow Flycatcher)
Bird	<i>Euphagus carolinus</i> (Rusty Blackbird)
Bird	<i>Falco peregrinus</i> (Peregrine Falcon)
Bird	<i>Grus americana</i> (Whooping Crane)
Bird	<i>Geothlypis Formosa</i> (Kentucky Warbler)
Bird	<i>Haliaeetus leucocephalus</i> (Bald Eagle)
Bird	<i>Hylocichla mustelina</i> (Wood Thrush)
Bird	<i>Icteria virens</i> (Yellow-breasted Chat)
Bird	<i>Icterus spurius</i> (Orchard Oriole)
Bird	<i>Ictinia mississippiensis</i> (Mississippi Kite)
Bird	<i>Ixobrychus exilis</i> (Least Bittern)
Bird	<i>Lanius ludovicianus</i> (Loggerhead Shrike)
Bird	<i>Limnothlypis swainsonii</i> (Swainson's Warbler)
Bird	<i>Melanerpes erythrocephalus</i> (Red-headed Woodpecker)
Bird	<i>Nycticorax nycticorax</i> (Black-crowned Night-heron)
Bird	<i>Parkesia motacilla</i> (Louisiana Waterthrush)
Bird	<i>Pluvialis dominica</i> (American Golden Plover)
Bird	<i>Protonotaria citrea</i> (Prothonotary Warbler)
Bird	<i>Riparia riparia</i> (Bank Swallow)
Bird	<i>Scolopax minor</i> (American Woodcock)
Bird	<i>Sturnella magna</i> (Eastern Meadowlark)
Bird	<i>Tyto alba</i> (Barn Owl)
Bird	<i>Vermivora chrysoptera</i> (Golden-winged Warbler)
Bird	<i>Vermivora cyanoptera</i> (Blue-winged Warbler)
Fish	<i>Hybognathus placitus</i> (Plains Minnow)
Fish	<i>Noturus gladiator</i> (Piebald Madtom)
Fish	<i>Scaphirhynchus albus</i> (Pallid Sturgeon)
Bird	<i>Setophaga discolor</i> (Prairie Warbler)
Mammal	<i>Ochrotomys nuttalli</i> (Golden Mouse)
Mammal	<i>Sorex longirostris</i> (Southeastern Shrew)
Mammal	<i>Zapus hudsonius</i> (Meadow Jumping Mouse)
Reptile	<i>Macrochelys temminckii</i> (Alligator Snapping Turtle)
Reptile	<i>Terrapene carolina</i> (Eastern Box Turtle)

OBION RIVER COA HABITATS (TN)	
Terrestrial Habitat Type	Total acres of very high, high, and medium ranked habitat
Natural habitats	
East Gulf Coastal Plain Large River Floodplain Forest	21426
East Gulf Coastal Plain Small Stream and River Floodplain Forest	7824
South-Central Interior / Upper Coastal Plain Flatwoods	3263
East Gulf Coastal Plain Northern Mesic Hardwood Slope Forest	726
East Gulf Coastal Plain Northern Loess Plain Oak-Hickory Upland	458
Semi-natural habitats	
Cropland	15815
Pasture	3452
Old Field / Successional	651
Aquatic Habitat Type	Total stream miles of very high, high, and medium ranked habitat
Headwaters and streams	9
Small River	5
Medium River	6