

Roaring River

Conservation Opportunity Area



The Roaring River Conservation Opportunity Area (COA) contains three of the thirteen State Scenic Rivers in Tennessee: Blackburn Fork State Scenic River, Roaring River State Scenic River, and Spring Creek State Scenic River. These scenic rivers all flow from headwater streams on the Highland Rim before dropping into the Nashville basin to the west and converging with the Cumberland River. This high gradient drop in elevation renders these rivers prone to flood events. Several state species of Greatest Conservation Need (GCN) and federally endangered mussels occur within this COA. Many of the riparian areas along tributary streams within the COA are used for agriculture -- both row crops and pasture.

Hellbenders have been documented in this conservation opportunity area, but populations of this species are almost certainly in decline. Multiple species of mussels and GCN species of fish are located within the numerous streams and rivers; these include the Redlips Darter, Rosyface Shiner, Cumberland Moccasinshell and Painted Creekshell Mussels.

Opportunities to improve riparian buffers exist on the State Scenic Rivers, at the confluence with the Cumberland River, and other smaller tributaries. Improving water quality, and specifically reducing sedimentation, is essential for the persistence of several sensitive aquatic species and is the primary objective of this COA. The occurrence of small dams within the COA decreases connectivity of the river and eliminates movement of animals both upstream and downstream.

Public Lands within the COA

Blackburn Fork Wildlife Management Area (WMA), Blackburn Fork State Scenic River, Cordell Hull WMA, Cummins Fall State Park, Roaring River State Scenic River, Spring Creek State Scenic River, The Boils, Washmorgan Hollow State Natural Area



Three of Tennessee's 13 State Scenic Rivers flow from headwater streams on the Highland Rim before dropping into the Nashville basin.



Top to bottom: Cummins Falls on the Roaring River State Scenic River - Brenton Rogers; Highland Rim stream - Hunter Desportes/next page: Researchers surveying for Hellbenders in the Roaring River - Chris Simpsom, TWRA; Clear flowing stream - Greg Wathen, TWRA

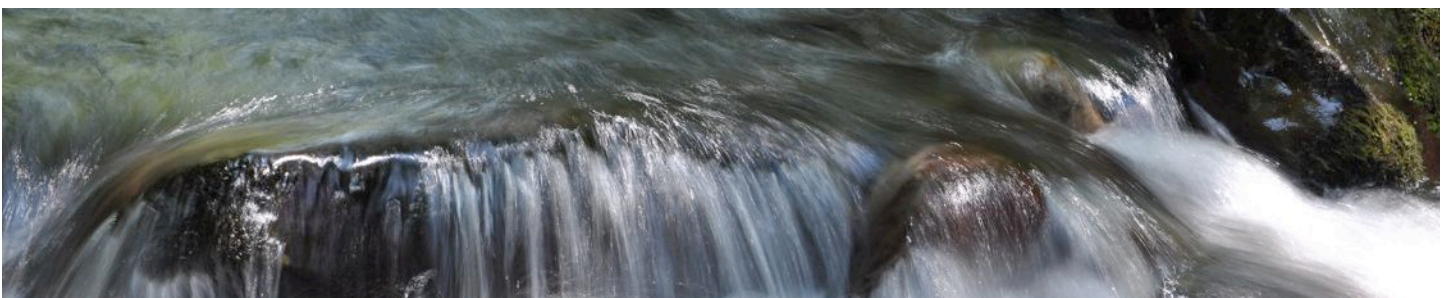
Roaring River Conservation Opportunity Area

Partnerships

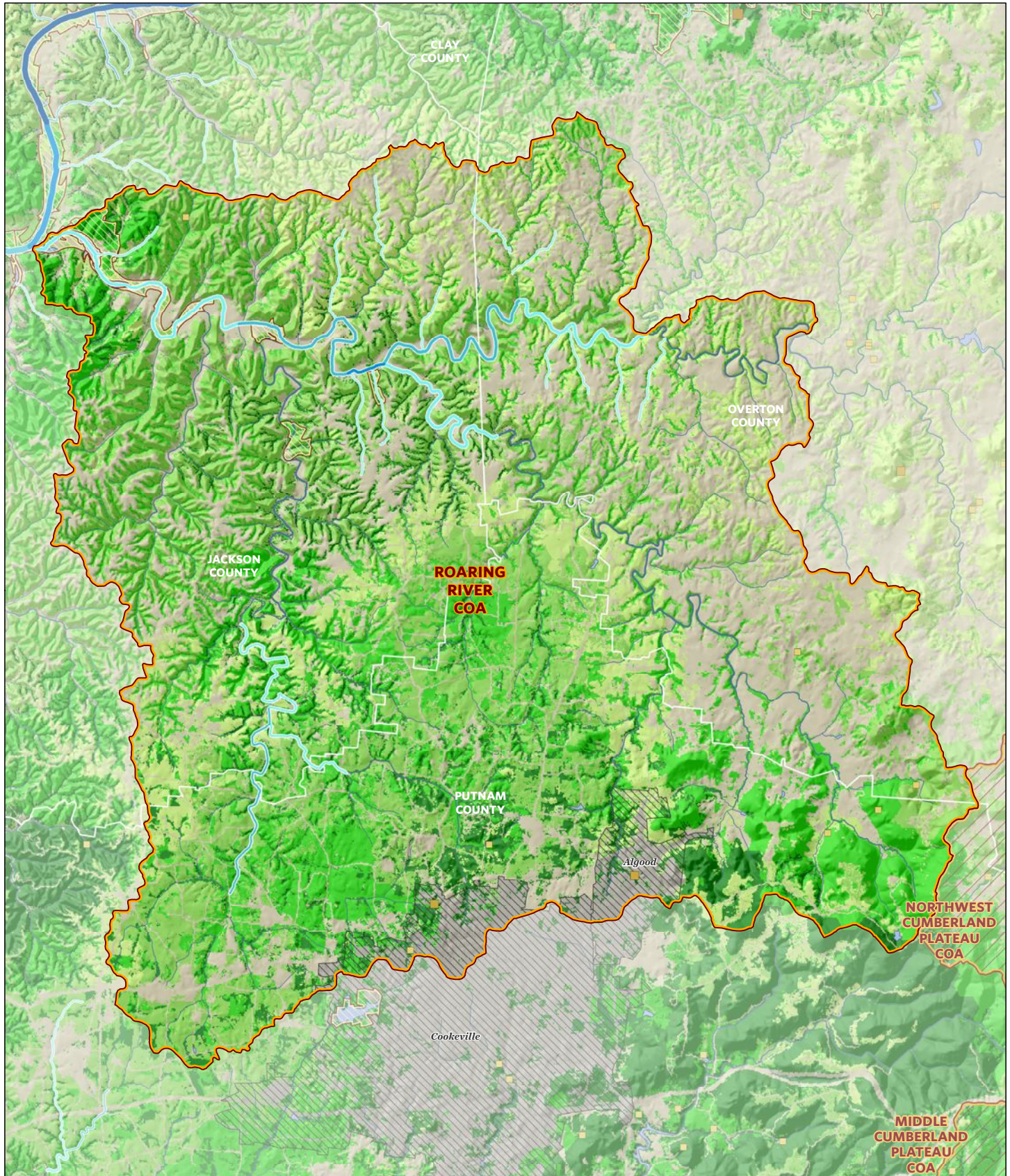
TWRA will partner with the U.S. Army Corps of Engineers, Tennessee Dept. of Environment and Conservation, The Nature Conservancy, and watershed groups to remove low head dams and other artificial barriers from Cumberland River tributaries. Dam removal from State Scenic Rivers will help fulfill the intent of the Tennessee Scenic Rivers Act of 1968 to reclaim Tennessee’s diminishing resource of free-flowing rivers. Partnerships will also be developed with willing private land owners to restore and improve riparian buffers and water quality.



Desired Change	Units
<p>+ Use government funded incentive programs to encourage willing private landowners to restore critical land units and protect aquatic resources.</p>	numbers
<p>+ Restore pasture or other agricultural lands to appropriate ecological systems.</p>	acres
<p>+ Improve knowledge of the geographical distribution of GCN species and/or habitat changes through scientific surveys.</p>	projects
<p>+ Restore in-stream flows to impounded streams within critical units of aquatic habitat.</p>	miles
<p>+ Increase acres under permanent conservation management in critical units of habitat.</p>	acres
<p>- Remove lowhead dams and other obstructions to reclaim free-flowing waters.</p>	structures



To learn more about the Roaring River Conservation Opportunity Area, please contact:
Chris Simpson, Wildlife Diversity Coordinator, Region 3 (931) 484-9571



0 1 2 Miles

Habitat Priority	Karst Aquatic Terrestrial		
	Karst	Aquatic	Terrestrial
Very High			
High			
Medium			
Low			
Very Low			

Conservation Opportunity Area
 Protected Land



The Nature Conservancy
 Protecting nature. Preserving life.

ROARING RIVER COA GCN SPECIES (TN)	
Taxa Group	Scientific & Common names
Amphibian	<i>Aneides aeneus</i> (Green Salamander)
Amphibian	<i>Hemidactylium scutatum</i> (Four-toed Salamander)
Bat	<i>Corynorhinus rafinesquii</i> (Rafinesque's Big-eared Bat)
Bat	<i>Myotis grisescens</i> (Gray Bat)
Bat	<i>Myotis lucifugus</i> (Little Brown Bat)
Bat	<i>Myotis septentrionalis</i> (Northern Myotis)
Bat	<i>Perimyotis subflavus</i> (Tri-colored Bat)
Bird	<i>Accipiter striatus</i> (Sharp-shinned Hawk)
Bird	<i>Ammodramus henslowii</i> (Henslow's Sparrow)
Bird	<i>Ammodramus savannarum</i> (Grasshopper Sparrow)
Bird	<i>Anas rubripes</i> (American Black Duck)
Bird	<i>Aquila chrysaetos</i> (Golden Eagle)
Bird	<i>Asio flammeus</i> (Short-eared Owl)
Bird	<i>Bonasa umbellus</i> (Ruffed Grouse)
Bird	<i>Botaurus lentiginosus</i> (American Bittern)
Bird	<i>Calidris mauri</i> (Western Sandpiper)
Bird	<i>Calidris pusilla</i> (Semipalmated Sandpiper)
Bird	<i>Caprimulgus carolinensis</i> (Chuck-will's-widow)
Bird	<i>Caprimulgus vociferus</i> (Whip-poor-will)
Bird	<i>Cardellina canadensis</i> (Canada Warbler)
Bird	<i>Chaetura pelagica</i> (Chimney Swift)
Bird	<i>Chordeiles minor</i> (Common Nighthawk)
Bird	<i>Circus cyaneus</i> (Northern Harrier)
Bird	<i>Cistothorus platensis</i> (Sedge Wren)
Bird	<i>Colinus virginianus</i> (Northern Bobwhite)
Bird	<i>Egretta caerulea</i> (Little Blue Heron)
Bird	<i>Empidonax minimus</i> (Least Flycatcher)
Bird	<i>Empidonax traillii</i> (Willow Flycatcher)
Bird	<i>Euphagus carolinus</i> (Rusty Blackbird)
Bird	<i>Falco peregrinus</i> (Peregrine Falcon)
Bird	<i>Geothlypis Formosa</i> (Kentucky Warbler)
Bird	<i>Grus americana</i> (Whooping Crane)
Bird	<i>Haliaeetus leucocephalus</i> (Bald Eagle)
Bird	<i>Helmitheros vermivorum</i> (Worm-eating Warbler)
Bird	<i>Hylocichla mustelina</i> (Wood Thrush)
Bird	<i>Icteria virens</i> (Yellow-breasted Chat)
Bird	<i>Icterus spurius</i> (Orchard Oriole)
Bird	<i>Ictinia mississippiensis</i> (Mississippi Kite)
Bird	<i>Ixobrychus exilis</i> (Least Bittern)
Bird	<i>Lanius ludovicianus</i> (Loggerhead Shrike)
Bird	<i>Limnothlypis swainsonii</i> (Swainson's Warbler)
Bird	<i>Melanerpes erythrocephalus</i> (Red-headed Woodpecker)
Bird	<i>Nycticorax nycticorax</i> (Black-crowned Night-heron)
Bird	<i>Parkesia motacilla</i> (Louisiana Waterthrush)
Bird	<i>Pluvialis dominica</i> (American Golden Plover)
Bird	<i>Protonotaria citrea</i> (Prothonotary Warbler)
Bird	<i>Riparia riparia</i> (Bank Swallow)
Bird	<i>Scolopax minor</i> (American Woodcock)
Bird	<i>Setophaga cerulea</i> (Cerulean Warbler)
Bird	<i>Setophaga discolor</i> (Prairie Warbler)
Bird	<i>Setophaga dominica</i> (Yellow-throated Warbler)
Bird	<i>Setophaga fusca</i> (Blackburnian Warbler)
Bird	<i>Sitta pusilla</i> (Brown-headed Nuthatch)

ROARING RIVER COA GCN SPECIES (TN)	
Taxa Group	Scientific & Common names
Bird	<i>Sturnella magna</i> (Eastern Meadowlark)
Bird	<i>Thryomanes bewickii</i> (Bewick's Wren)
Bird	<i>Tyto alba</i> (Barn Owl)
Bird	<i>Vermivora chrysoptera</i> (Golden-winged Warbler)
Bird	<i>Vermivora cyanoptera</i> (Blue-winged Warbler)
Bivalve	<i>Medionidus conradicus</i> (Cumberland Moccasinshell)
Bivalve	<i>Villosa taeniata</i> (Painted Creekshell)
Fish	<i>Crystallaria cincotta</i> (Diamond Darter)
Fish	<i>Etheostoma maydeni</i> (Redlips Darter)
Fish	<i>Notropis rubellus</i> (Rosyface Shiner)
Mammal	<i>Neotoma magister</i> (Allegheny Woodrat)
Mammal	<i>Neotoma magister</i> (Allegheny Woodrat)
Plant	<i>Juglans cinerea</i> (Butternut)
Plant	<i>Lilium canadense</i> (Canada Lily)
Plant	<i>Panax quinquefolius</i> (American Ginseng)
Plant	<i>Trillium pusillum</i> (Least Trillium)
Subterranean - Amphibian	<i>Gyrinophilus palleucus</i> (Tennessee Cave Salamander)
Subterranean - Arachnid	<i>Calymmaria persica</i> (Cave-loving funnel-web spider)
Subterranean - Arachnid	<i>Kleptochthonius pluto</i> ((a cave obligate pseudoscorpion))
Subterranean - Arachnid	<i>Liocranoides tennesseensis</i> (Tennessee two-clawed spider)
Subterranean - Arachnid	<i>Meta ovalis</i> (American cave orb weaver)
Subterranean - Arachnid	<i>Nesticus stygius</i> ((a cave obligate spider))
Subterranean - Crustacean	<i>Caecidotea bicrenata bicrenata</i> ((a cave obligate isopod))
Subterranean - Crustacean	<i>Caecidotea stygia</i> ((a cave obligate isopod))
Subterranean - Crustacean	<i>Cambarus tenebrosus</i> (Cavespring Crayfish)
Subterranean - Crustacean	<i>Orconectes australis</i> (Southern Cave Crayfish)
Subterranean - Crustacean	<i>Stygobromus exilis</i> (Central Kentucky Cave Obligate)
Subterranean - Crustacean	<i>Stygobromus</i> sp. 24 ((a cave obligate amphipod))
Subterranean - Fish	<i>Typhlichthys subterraneus</i> (Southern Cavefish)
Subterranean - Gastropod	<i>Helicodiscus barri</i> (Raccoon Coil)
Subterranean - Gastropod	<i>Helicodiscus hadenoecus</i> (Cricket Coil)
Subterranean - Insect	<i>Arrhopalites marshalli</i> (Marshall's Cave Springtail)
Subterranean - Insect	<i>Atheta trogliphila</i> ((a trogliphilic rove beetle))
Subterranean - Insect	<i>Batrisodes pannosus</i> ((a cave obligate beetle))
Subterranean - Insect	<i>Ceuthophilus stygius</i> (cave cricket)
Subterranean - Insect	<i>Hadenoecus opilionides</i> ((a cave obligate cricket))
Subterranean - Insect	<i>Litocampa cookei</i> (Cooke's Cave Dipluran)
Subterranean - Insect	<i>Megaselia cavernicola</i> (cave hump-backed fly)
Subterranean - Insect	<i>Nelsonites walteri</i> ((a cave obligate beetle))
Subterranean - Insect	<i>Platynus tenuicollis</i> (ground beetle)
Subterranean - Insect	<i>Pseudanophthalmus beakleyi</i> ((a cave obligate beetle))
Subterranean - Insect	<i>Pseudanophthalmus robustus</i> ((a cave obligate beetle))
Subterranean - Insect	<i>Pseudanophthalmus valentinei</i> ((a cave obligate beetle))
Subterranean - Insect	<i>Psyllipsocus ramburi</i> ((a cave barklice))
Subterranean - Insect	<i>Rhadine caudata</i> (ground beetle)
Subterranean - Insect	<i>Spelobia tenebrarum</i> (Cave dung fly)
Subterranean - Insect	<i>Tomocerus bidentatus</i> (Two-toothed springtail)
Subterranean - Millipede	<i>Pseudotremia manni</i> (Mann's Cave Millipede)
Subterranean - Millipede	<i>Scoterpes ventus</i> (Eastern Tennessee Cave Millipede)

ROARING RIVER COA HABITATS (TN)	
Terrestrial Habitat Type	Total acres of very high, high, and medium ranked habitat
Natural habitats	
South-Central Interior Mesophytic Forest	17454
Southern Interior Low Plateau Dry-Mesic Oak Forest	13726
Southern Ridge and Valley / Cumberland Dry Calcareous Forest	4784
South-Central Interior Small Stream and Riparian	2689
Allegheny-Cumberland Dry Oak Forest and Woodland	347
Appalachian (Hemlock)-Northern Hardwood Forest	88
Southern Appalachian Low-Elevation Pine Forest	67
Semi-natural habitats	
Pasture	2733
Cropland	1818
Old Field / Successional	958
Aquatic Habitat Type	Total stream miles of very high, high, and medium ranked habitat
Small River	1