



Tennessee Labor Market Report

Bill Lee
Governor

Deniece Thomas
Commissioner

September
2023

Highlights

Pages 1-3: Data and information on part-time workers in Tennessee

Page 4: Tennessee annual average labor force statistics, and September county unemployment rates

Pages 5-6: Monthly Tennessee nonfarm employment, and MSA and city labor force data

Pages 7-10: Monthly nonfarm employment statistics for the four largest MSA's and graphs of the unemployment rates

Page 11: Monthly nonfarm employment for each small MSA in Tennessee

Page 12: Monthly consumer price index and hours and earnings for all workers by industry and production workers in manufacturing, graphs of Tennessee unemployment and labor force participation rates

Part-time Workers in Tennessee

The Bureau of Labor Statistics (BLS) publishes annual statistics derived from the Current Population Survey (CPS) on full- and part-time workers by state. People are classified as full- or part-time based on the hours they usually work each week. Workers who usually work less than 35 hours each week are classified as part-time workers. Because people are classified based on the number of hours usually worked each week, some part-time workers may have worked 35 or more hours. Likewise, some full-time workers will have worked under 35 hours.

Measures of people working part-time for economic and noneconomic reasons are based upon a worker's actual hours worked rather than usual work schedule. Economic reasons include slack work such as reduced hours, un-favorable business conditions, inability to find full-time work and seasonal declines. Those working part-time for economic reasons are also referred to as involuntary part-time workers. Noneconomic reasons include illness or health limitations, childcare problems, personal obligations, in school or training, retirement or Social Security limits on earnings, or having a job where full-time is considered less than 35 hours.

In 2022, in Tennessee, 2,438,000 employed workers (83.1 percent) usually worked full-time (35 hours or more) compared to 496,000 (16.9 percent) who usually worked part-time. Of those who usually worked part-time, and were at work 93.5 percent were at work. Among those at work, 8.2 percent were part-time for economic

reasons with remaining 91.8 percent part-time for noneconomic reasons.

Among all workers, whether at work or not at work, the highest share of part-time workers was in 2013 when over one-fifth (20.1 percent) of workers usually worked part-time. In 2009, during the Great Recession, over 30 percent of those at work who usually worked part-time were doing so for economic reasons. Despite a brief uptick in 2020 due to the COVID-19 pandemic, the proportion of at work part-time workers who are working part-time for economic reasons has steadily declined since the Great Recession to only 8.2 percent in 2022, the lowest share since data began being published in 1997.

Of the 454,000 usual part-time workers who were actually working fewer than 35 weekly hours, 31.9 percent cited "other reasons" as to why they are working part-time. These other reasons include health limitations, seasonal work, and working where a full-time workweek is less than 35 hours. Another 22.2 percent cited school or other training.

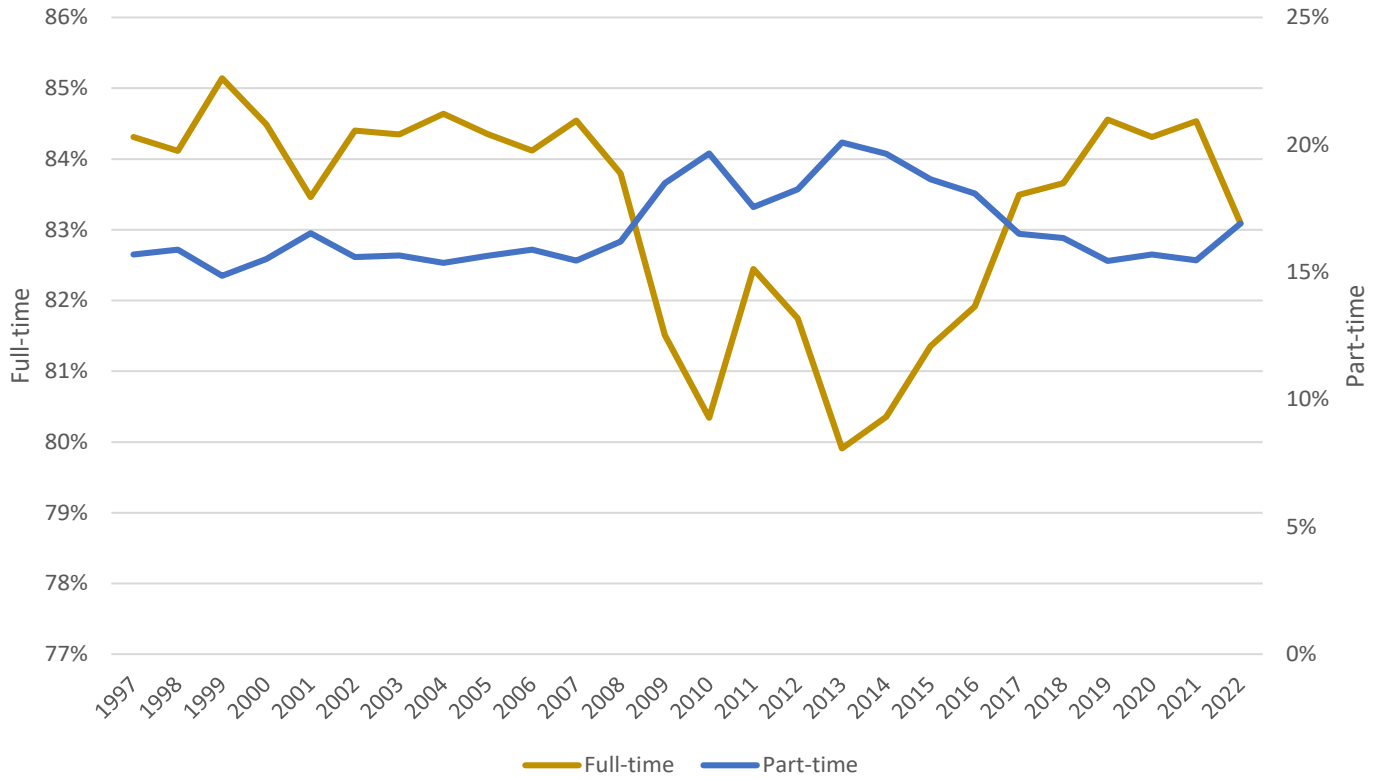
Of full-time workers at work, 215,000 (8.8 percent) were actually working fewer than 35 hours. Other reasons also represented the largest share of these workers at 40 percent, followed by vacation or personal time at 35.3 percent.

For more data and information for 2022, see Tables 16 and 23 [here](#).

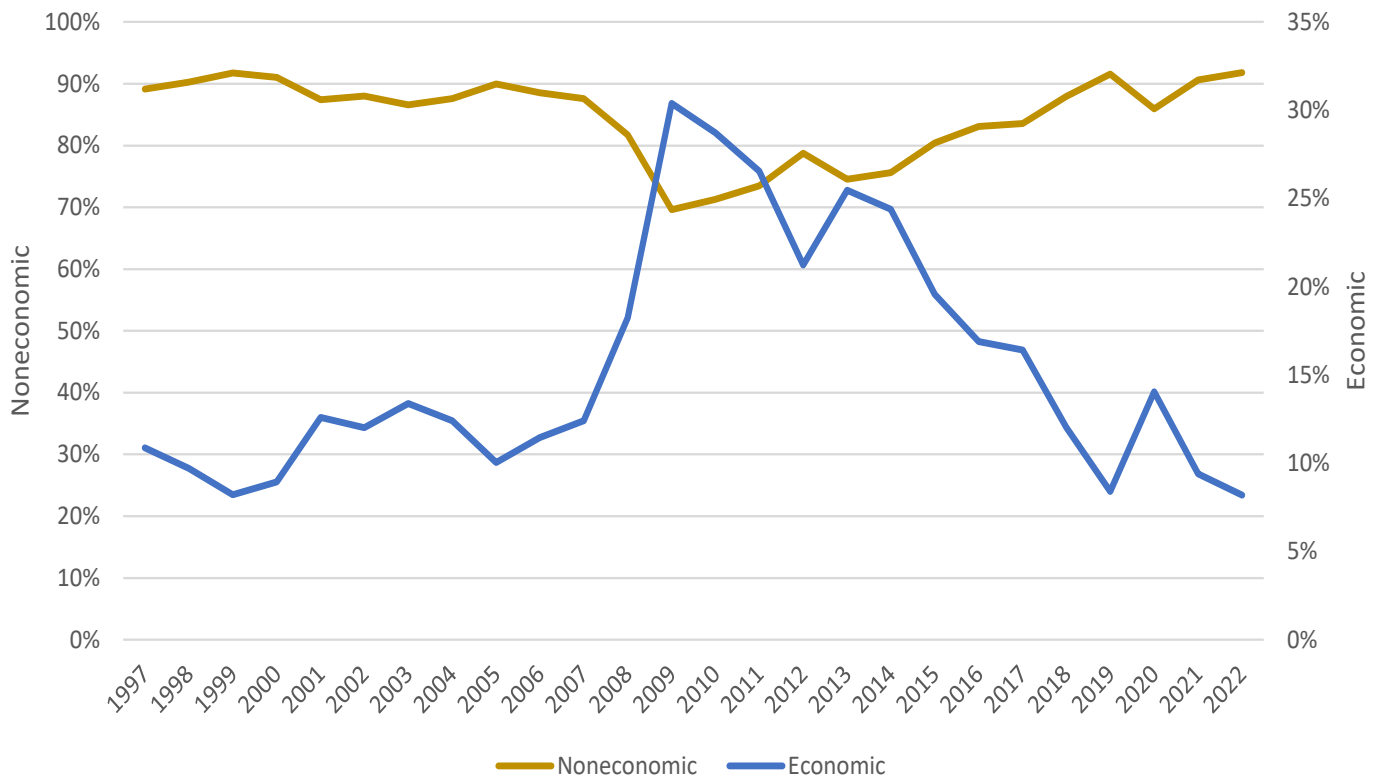
For data prior to 2022, go [here](#).

Part-time Workers in Tennessee

Workers Who are Usually Full-time vs. Part-time as a Percent of Total



Reasons for Usually Working Part-Time



Source: U.S. Bureau of Labor Statistics

Part-time and Full-time Workers in Tennessee (in thousands)							
Year	Total Employed	Usually Full-time Workers	Usually Part-time Workers	% Usually Part-time	Part-time, At Work	Part-time for Economic Reasons	Part-time for Noneconomic Reasons
1997	2,562	2,160	402	15.7%	368	10.9%	89.1%
1998	2,644	2,224	420	15.9%	391	9.7%	90.3%
1999	2,705	2,303	402	14.9%	377	8.2%	91.8%
2000	2,688	2,271	417	15.5%	391	9.0%	91.0%
2001	2,691	2,246	445	16.5%	421	12.6%	87.4%
2002	2,776	2,343	433	15.6%	408	12.0%	88.0%
2003	2,741	2,312	429	15.7%	396	13.4%	86.6%
2004	2,747	2,325	422	15.4%	395	12.4%	87.6%
2005	2,716	2,291	425	15.6%	398	10.1%	89.9%
2006	2,846	2,394	452	15.9%	419	11.5%	88.5%
2007	2,931	2,478	453	15.5%	419	12.4%	87.6%
2008	2,839	2,379	460	16.2%	433	18.2%	81.8%
2009	2,704	2,204	500	18.5%	474	30.4%	69.6%
2010	2,788	2,240	548	19.7%	515	28.7%	71.3%
2011	2,854	2,353	501	17.6%	471	26.5%	73.5%
2012	2,854	2,333	521	18.3%	490	21.2%	78.8%
2013	2,817	2,251	566	20.1%	534	25.5%	74.5%
2014	2,825	2,270	555	19.6%	529	24.4%	75.6%
2015	2,912	2,369	543	18.6%	516	19.6%	80.4%
2016	2,997	2,455	542	18.1%	521	16.9%	83.1%
2017	3,078	2,570	508	16.5%	481	16.4%	83.6%
2018	3,127	2,616	511	16.3%	482	12.0%	88.0%
2019	3,244	2,743	501	15.4%	476	8.4%	91.6%
2020	3,040	2,563	477	15.7%	441	14.1%	85.9%
2021	3,188	2,695	493	15.5%	468	9.4%	90.6%
2022	2,934	2,438	496	16.9%	464	8.2%	91.8%

Reasons for Working Fewer than 35 Hours (in thousands)														
Year	Usually work full-time						Usually work part-time							
	Total	Slack work or business conditions	Vacation or personal day	Holiday, legal or religious	Weather related	Other reasons ¹	Total	Slack work or business conditions	Could only find part-time work	Childcare problems	Family or personal obligations	In school or training	Retired or SS limit on earnings	Other reasons ²
2007	179	32	63	7	9	68	400	26	23	10	93	116	40	93
2008	179	39	49	9	13	68	418	44	30	10	90	100	41	103
2009	242	66	58	38	12	68	456	91	46	12	66	97	40	103
2010	191	41	59	12	23	57	495	83	61	15	80	112	44	101
2011	206	34	59	11	44	58	453	74	48	18	72	95	50	95
2012	186	30	71	11	6	69	471	59	40	16	73	108	54	120
2013	179	30	60	6	13	70	516	68	64	12	90	117	50	114
2014	188	28	59	12	22	67	507	59	68	20	77	96	59	128
2015	193	19	59	40	13	62	495	50	49	20	87	109	47	132
2016	188	24	61	14	16	73	500	45	41	17	78	116	54	149
2017	208	24	78	25	8	73	462	42	33	22	68	114	58	125
2018	176	19	60	4	24	70	467	30	25	24	74	119	64	131
2019	160	16	66	4	9	65	461	23	17	24	73	118	62	145
2020	292	81	64	47	13	88	430	40	20	15	67	88	59	140
2021	196	28	73	10	13	71	454	28	16	21	76	98	56	159
2022	215	24	76	18	11	86	454	24	15	19	85	101	65	145

1) Includes seasonal work, job started or ended, own illness, childcare problems, other family or personal obligations, labor dispute, in school or training, civic or military duty, and all other reasons.

2) Includes seasonal work, health and medical limitations, full-time workweek less than 35 hours, and all other reasons.

Source: U.S. Bureau of Labor Statistics

Tennessee Civilian Labor Workforce 1993-Present

County Unemployment Rates*

(NUMBERS IN THOUSANDS)

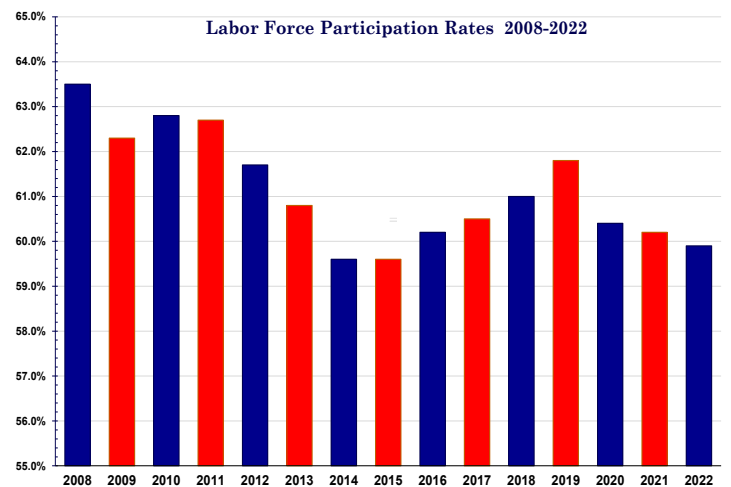
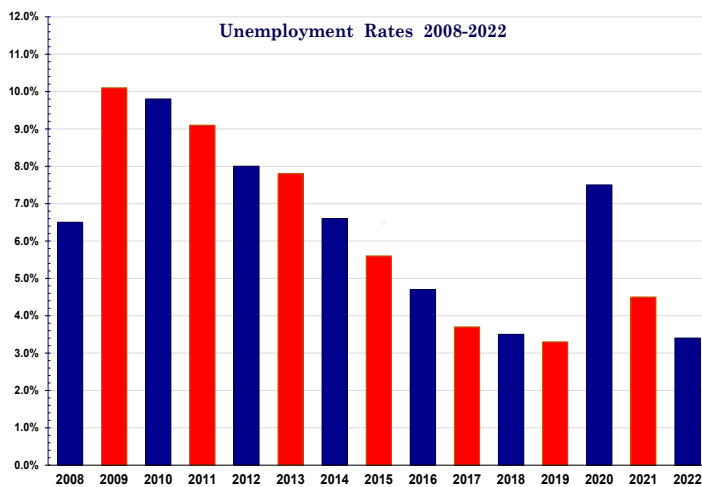
MONTHLY DATA NOT SEASONALLY ADJUSTED

Year and Month	Civilian noninstitutional population	Civilian Labor Force					
		Total	Participation Rate (%)	Employed		Unemployed	
				Total	Rate (%)	Total	Rate (%)
1993	3,936.5	2,534.5	64.4%	2,386.9	60.6%	147.6	5.8%
1994	4,003.3	2,657.2	66.4%	2,529.6	63.2%	127.6	4.8%
1995	4,075.6	2,723.1	66.8%	2,582.9	63.4%	140.3	5.2%
1996	4,150.1	2,763.2	66.6%	2,620.2	63.1%	143.0	5.2%
1997	4,218.9	2,780.6	65.9%	2,634.2	62.4%	146.4	5.3%
1998	4,272.7	2,810.1	65.8%	2,688.5	62.9%	121.6	4.3%
1999	4,317.6	2,843.0	65.8%	2,730.1	63.2%	112.9	4.0%
2000	4,358.4	2,849.0	65.4%	2,738.8	62.8%	110.2	3.9%
2001	4,401.2	2,857.7	64.9%	2,728.6	62.0%	129.0	4.5%
2002	4,444.9	2,898.9	65.2%	2,750.4	61.9%	148.5	5.1%
2003	4,492.3	2,904.6	64.7%	2,744.4	61.1%	160.2	5.5%
2004	4,541.6	2,897.8	63.8%	2,742.9	60.4%	154.9	5.3%
2005	4,610.1	2,898.5	62.9%	2,738.2	59.4%	160.3	5.5%
2006	4,692.4	3,014.7	64.2%	2,856.1	60.9%	158.7	5.3%
2007	4,760.1	3,043.3	63.9%	2,901.9	61.0%	141.3	4.6%
2008	4,821.7	3,060.8	63.5%	2,862.1	59.4%	198.7	6.5%
2009	4,868.4	3,032.7	62.3%	2,725.1	56.0%	307.5	10.1%
2010	4,925.4	3,093.1	62.8%	2,789.1	56.6%	304.1	9.8%
2011	4,973.5	3,117.5	62.7%	2,833.3	57.0%	284.2	9.1%
2012	5,020.4	3,096.3	61.7%	2,849.7	56.8%	246.6	8.0%
2013	5,064.6	3,078.9	60.8%	2,840.1	56.1%	238.8	7.8%
2014	5,109.9	3,043.6	59.6%	2,842.5	55.6%	201.0	6.6%
2015	5,159.2	3,074.2	59.6%	2,902.7	56.3%	171.5	5.6%
2016	5,213.9	3,136.4	60.2%	2,987.7	57.3%	148.7	4.7%
2017	5,284.9	3,197.0	60.5%	3,077.5	58.2%	119.5	3.7%
2018	5,342.7	3,257.1	61.0%	3,143.9	58.8%	113.3	3.5%
2019	5,397.4	3,335.3	61.9%	3,223.6	59.8%	113.3	3.5%
2020	5,466.9	3,303.2	60.4%	3,056.7	55.9%	246.5	7.5%
2021	5,523.4	3,323.5	60.4%	3,174.1	57.8%	149.4	4.3%
2022	5,595.3	3,352.0	59.9%	3,238.6	57.9%	113.5	3.4%
2023							
January	5,643.3	3,333.8	59.1%	3,215.7	57.0%	118.1	3.5%
February	5,650.1	3,361.9	59.5%	3,241.5	57.4%	120.4	3.6%
March	5,657.2	3,364.8	59.5%	3,259.6	57.6%	105.2	3.1%
April	5,664.5	3,355.6	59.2%	3,268.6	57.7%	87.1	2.6%
May	5,672.0	3,371.2	59.4%	3,261.9	57.5%	109.3	3.2%
June	5,679.6	3,403.3	59.9%	3,274.1	57.6%	129.2	3.8%
July	5,687.6	3,418.8	60.1%	3,294.1	57.9%	124.7	3.6%
August (p)	5,695.9	3,370.5	59.2%	3,257.4	57.2%	113.0	3.4%
September (r)	5,704.1	3,388.9	59.4%	3,272.4	57.4%	116.5	3.4%

(r)=revised
(p)=preliminary

County	Sep. 2022	Sep. 2023	County	Sep. 2022	Sep. 2023
	Anderson	3.1		3.4	Lauderdale
Bedford	3.3	3.7	Lawrence	3.5	3.6
Benton	3.9	3.9	Lewis	3.6	3.4
Bledsoe	5.1	5.4	Lincoln	3.0	3.3
Blount	2.9	3.1	Loudon	3.2	3.4
Bradley	3.3	3.7	Macon	2.9	3.1
Campbell	4.0	4.2	Madison	3.2	3.5
Cannon	2.8	3.2	Marion	3.7	4.3
Carroll	3.6	4.4	Marshall	3.2	3.4
Carter	3.5	3.9	Maury	2.8	2.9
Cheatham	2.5	2.7	McMinn	4.0	4.3
Chester	2.9	3.3	McNairy	4.4	4.8
Claiborne	3.5	3.9	Meigs	4.3	4.9
Clay	3.9	4.5	Monroe	3.6	3.7
Cocke	4.2	4.2	Montgomery	3.6	4.0
Coffee	3.3	3.6	Moore	2.6	2.6
Crockett	3.0	3.4	Morgan	3.6	4.0
Cumberland	3.9	4.3	Obion	3.6	4.1
Davidson	2.6	2.8	Overton	3.1	3.5
Decatur	4.3	4.1	Perry	4.5	4.7
DeKalb	3.4	4.0	Pickett	3.4	4.3
Dickson	2.9	2.9	Polk	3.4	3.9
Dyer	3.5	3.7	Putnam	3.2	3.6
Fayette	3.4	3.8	Rhea	4.4	4.3
Fentress	3.5	3.7	Roane	3.5	3.8
Franklin	3.4	3.9	Robertson	2.7	2.9
Gibson	3.3	3.7	Rutherford	2.5	2.8
Giles	3.0	3.2	Scott	4.8	4.7
Grainger	3.7	3.7	Sequatchie	4.0	4.1
Greene	3.6	4.4	Sevier	2.5	2.6
Grundy	4.2	4.5	Shelby	4.3	4.4
Hamblen	3.3	3.7	Smith	2.9	3.2
Hamilton	3.2	3.4	Stewart	3.6	3.8
Hancock	3.8	4.6	Sullivan	3.3	3.7
Hardeman	3.9	4.4	Sumner	2.6	2.8
Hardin	3.7	4.1	Tipton	3.4	4.0
Hawkins	3.7	4.1	Trousdale	2.7	3.3
Haywood	4.5	4.8	Unicoi	4.0	4.2
Henderson	3.4	3.8	Union	3.5	4.0
Henry	3.8	3.7	Van Buren	4.0	4.5
Hickman	2.7	2.9	Warren	3.9	4.1
Houston	4.0	4.5	Washington	3.1	3.5
Humphreys	3.3	3.5	Wayne	4.6	3.8
Jackson	3.7	4.2	Weakley	3.1	3.8
Jefferson	3.3	3.5	White	3.4	3.5
Johnson	3.1	3.3	Williamson	2.3	2.7
Knox	2.7	3.0	Wilson	2.5	2.9
Lake	4.8	4.5			

*Data Not Seasonally Adjusted



Statewide

Estimated Nonfarm Employment (in thousands)

Industry	Sep. 2022	Revised Aug. 2023	Preliminary Sep. 2023	Net Change	
				Aug. 2023 Sep. 2023	Sep. 2022 Sep. 2023
Total Nonfarm	3284.4	3,303.6	3,337.8	34.2	53.4
Total Private	2839.7	2,869.6	2,880.3	10.7	40.6
Goods Producing	523.9	526.4	530.2	3.8	6.3
Mining, Logging & Construction	155.3	156.9	160.4	3.5	5.1
Mining & Logging	4.5	4.4	4.4	0.0	-0.1
Construction	150.8	152.5	156.0	3.5	5.2
Construction of Buildings	32.9	31.6	32.0	0.4	-0.9
Heavy and Civil Engineering	19.8	20.4	20.7	0.3	0.9
Specialty Trade Contractors	98.1	100.5	103.3	2.8	5.2
Manufacturing	368.6	369.5	369.8	0.3	1.2
Durable Goods Manufacturing	235.0	237.0	236.2	-0.8	1.2
Wood Product Manufacturing	14.2	14.1	14.0	-0.1	-0.2
Nonmetallic Mineral Product Manufacturing	15.3	15.3	15.2	-0.1	-0.1
Primary Metal Manufacturing	11.1	10.9	10.9	0.0	-0.2
Fabricated Metal Product Manufacturing	42.1	41.7	41.7	0.0	-0.4
Machinery Manufacturing	24.7	24.2	24.1	-0.1	-0.6
Computer & Electronic Product Manufacturing	7.0	7.0	6.9	-0.1	-0.1
Electrical Equipment & Appliance Manufacturing	19.1	18.5	18.5	0.0	-0.6
Transportation Equipment Manufacturing	74.7	78.6	78.3	-0.3	3.6
Furniture & Related Product Manufacturing	9.4	9.3	9.2	-0.1	-0.2
Miscellaneous Manufacturing	17.4	17.4	17.4	0.0	0.0
Nondurable Goods Manufacturing	133.6	132.5	133.6	1.1	0.0
Food Manufacturing	40.2	40.0	40.4	0.4	0.2
Beverage & Tobacco Product Manufacturing	9.3	9.4	9.5	0.1	0.2
Paper Manufacturing	13.5	13.4	13.5	0.1	0.0
Printing & Related Support Activities	8.3	8.4	8.5	0.1	0.2
Chemical Manufacturing	26.9	26.6	26.8	0.2	-0.1
Plastics & Rubber Products Manufacturing	25.3	24.9	25.1	0.2	-0.2
Service Providing	2760.5	2,777.2	2,807.6	30.4	47.1
Trade, Transportation, & Utilities	674.7	675.1	679.1	4.0	4.4
Wholesale Trade	130.9	132.7	134.3	1.6	3.4
Merchant Wholesalers, Durable Goods	77.3	79.8	81.2	1.4	3.9
Merchant Wholesalers, Nondurable Goods	45.7	45.0	45.1	0.1	-0.6
Wholesale Trade Agents & Brokers	7.9	7.9	8.0	0.1	0.1
Retail Trade	338.4	341.9	343.4	1.5	5.0
Motor Vehicle & Parts Dealers	47.9	48.2	48.7	0.5	0.8
Building Material, Garden Equipment, & Supplies	33.4	32.9	33.1	0.2	-0.3
Food & Beverage Retailers	59.2	60.1	60.0	-0.1	0.8
Furniture, Home Furnishings, Electronics, & Appliance	19.4	18.7	18.8	0.1	-0.6
General Merchandise Retailers	72.6	76.3	76.7	0.4	4.1
Health & Personal Care Retailers	25.2	24.7	25.0	0.3	-0.2
Gasoline Stations & Fuel Dealers	26.4	26.9	27.0	0.1	0.6
Clothing, Clothing Accessories, Shoe & Jewelry Retail	23.0	22.9	23.0	0.1	0.0
Sporting Goods, Hobby, Music, & Book Retailers	31.3	31.2	31.1	-0.1	-0.2
Transportation, Warehousing, & Utilities	205.4	200.5	201.4	0.9	-4.0
Utilities	4.2	4.2	4.2	0.0	0.0
Transportation & Warehousing	201.2	196.3	197.2	0.9	-4.0
Truck Transportation	59.9	58.8	60.1	1.3	0.2
Information	55.5	55.6	55.8	0.2	0.3
Financial Activities	177.5	177.0	175.5	-1.5	-2.0
Finance & Insurance	133.3	133.0	132.0	-1.0	-1.3
Real Estate, Rental, & Leasing	44.2	44.0	43.5	-0.5	-0.7
Professional & Business Services	470.1	472.3	470.4	-1.9	0.3
Professional, Scientific, & Technical Services	172.2	183.0	183.5	0.5	11.3
Management of Companies & Enterprises	54.8	55.1	55.0	-0.1	0.2
Administrative, Support, & Waste Management	243.1	234.2	231.9	-2.3	-11.2
Private Educational & Health Services	458.1	465.9	475.5	9.6	17.4
Private Educational Services	65.5	59.0	66.1	7.1	0.6
Health Care & Social Assistance	392.6	406.9	409.4	2.5	16.8
Ambulatory Health Care Services	168.4	172.4	173.2	0.8	4.8
Hospitals	112.8	117.7	118.1	0.4	5.3
Nursing & Residential Care Facilities	57.6	60.7	60.9	0.2	3.3
Social Assistance	53.8	56.1	57.2	1.1	3.4
Leisure & Hospitality	353.2	366.2	362.7	-3.5	9.5
Arts, Entertainment, & Recreation	46.9	47.7	46.8	-0.9	-0.1
Accommodation & Food Services	306.3	318.5	315.9	-2.6	9.6
Accommodation	38.3	40.1	39.0	-1.1	0.7
Food Services & Drinking Places	268.0	278.4	276.9	-1.5	8.9
Other Services	126.7	131.1	131.1	0.0	4.4
Government	444.7	434.0	457.5	23.5	12.8
Federal Government	52.5	56.4	56.7	0.3	4.2
State Government	97.2	89.4	99.2	9.8	2.0
State Government Educational Services	57.5	48.7	58.7	10.0	1.2
State Government Excluding Educational Services	39.7	40.7	40.5	-0.2	0.8
Local Government	295.0	288.2	301.6	13.4	6.6
Local Government Educational Services	147.9	133.4	148.0	14.6	0.1
Local Government Excluding Educational Services	147.1	154.8	153.6	-1.2	6.5

Nonfarm Employment Summary

Monthly Employment Changes

Total Nonfarm	+34,200
Local Government Educational Services	+14,600
State Government Educational Services	+10,000
Private Educational Services	+7,100
Trade, Transportation & Utilities	+4,000
Wholesale Trade	+1,600
Retail Trade	+1,500
Construction	+3,500
Specialty Trade Contractors	+2,800
Health Care & Social Assistance	+2,500
Nondurable Goods Manufacturing	+1,100
Leisure & Hospitality	-3,500
Accommodation & Food Services	-2,800
Administrative, Support & Waste Mgmt	-2,300
Financial Activities	-1,500

Annual Changes

Total Nonfarm	+53,400
Private Educational & Health Services	+17,400
Health Care & Social Assistance	+16,800
Government	+12,800
Local Government Educational Svcs	+6,500
Professional, Scientific & Tech Services	+11,300
Accommodation & Food Services	+9,600
Professional, Scientific & Tech Services	+11,100
Specialty Trade Contractors	+5,200
Other Services	+4,400

Monthly Unemployment Rates Counties

Increased	80
Decreased	7
Unchanged	8
Highest/Lowest Rate	Rate
Moore County	2.6%
Bledsoe County	5.4%

The data from all the nonfarm employment estimates tables include all full- and part-time nonfarm wage and salary employees who worked during or received pay for any part of the pay period that includes the 12th of the month. This is a count of jobs by place of work. Agricultural workers, proprietors, self-employed persons, workers in private households, and unpaid family workers are excluded. These numbers may not add due to rounding. Data are based on the 2021 benchmark.

Civilian Labor Force

Civilian Labor Force Summary

	September 2022				August 2023				September 2023			
	Labor Force	Employed	Unemployed	Rate	Labor Force	Employed	Unemployed	Rate	Labor Force	Employed	Unemployed	Rate
Seasonally Adjusted												
UNITED STATES	164,619,000	158,850,000	5,770,000	3.5	167,839,000	161,484,000	6,355,000	3.8	167,929,000	161,570,000	6,360,000	3.8
TENNESSEE	3,330,399	3,216,188	114,211	3.4	3,380,770	3,275,668	105,102	3.1	3,386,554	3,278,104	108,450	3.2
Not Seasonally Adjusted												
UNITED STATES	164,463,000	159,003,000	5,460,000	3.3	168,049,000	161,427,000	6,623,000	3.9	167,718,000	161,669,000	6,049,000	3.6
TENNESSEE	3,334,048	3,227,369	106,679	3.2	3,370,473	3,257,428	113,045	3.4	3,388,921	3,272,395	116,526	3.4
Metropolitan Statistical Areas												
Chattanooga	274,058	265,723	8,335	3.0	278,276	268,796	9,480	3.4	278,844	269,649	9,195	3.3
Clarksville	118,815	114,301	4,514	3.8	118,569	113,612	4,957	4.2	119,067	114,041	5,026	4.2
Cleveland	56,612	54,727	1,885	3.3	57,361	55,273	2,088	3.6	57,548	55,419	2,129	3.7
Jackson	63,703	61,705	1,998	3.1	63,830	61,713	2,117	3.3	63,951	61,749	2,202	3.4
Johnson City	92,262	89,224	3,038	3.3	91,612	88,458	3,154	3.4	93,169	89,800	3,369	3.6
Kingsport-Bristol	135,418	130,939	4,479	3.3	137,576	132,902	4,674	3.4	137,791	132,896	4,895	3.6
Knoxville	437,920	425,098	12,822	2.9	444,942	431,246	13,696	3.1	449,813	435,485	14,328	3.2
Memphis	627,424	601,866	25,558	4.1	622,375	595,158	27,217	4.4	624,155	598,695	25,460	4.1
Morristown	52,732	50,980	1,752	3.3	52,793	50,995	1,798	3.4	53,221	51,312	1,909	3.6
Nashville-Murfreesboro	1,122,454	1,093,286	29,168	2.6	1,142,569	1,111,653	30,916	2.7	1,150,729	1,118,321	32,408	2.8
Micropolitan Statistical Areas												
Athens	21,017	20,168	849	4.0	20,984	20,111	873	4.2	20,921	20,020	901	4.3
Brownsville	7,415	7,083	332	4.5	7,489	7,138	351	4.7	7,440	7,084	356	4.8
Cookeville	49,843	48,227	1,616	3.2	50,051	48,364	1,687	3.4	50,601	48,767	1,834	3.6
Crossville	23,468	22,563	905	3.9	23,837	22,903	934	3.9	23,686	22,670	1,016	4.3
Dayton	13,484	12,892	592	4.4	13,772	13,173	599	4.3	13,950	13,351	599	4.3
Dyersburg	16,443	15,872	571	3.5	16,627	16,008	619	3.7	16,654	16,046	608	3.7
Greeneville	28,321	27,312	1,009	3.6	28,287	27,153	1,134	4.0	28,294	27,052	1,242	4.4
Lawrenceburg	19,063	18,397	666	3.5	19,319	18,641	678	3.5	19,422	18,722	700	3.6
Lewisburg	15,596	15,097	499	3.2	15,859	15,370	489	3.1	15,875	15,341	534	3.4
Martin	15,338	14,864	474	3.1	15,301	14,779	522	3.4	15,700	15,103	597	3.8
McMinnville	16,282	15,654	628	3.9	16,465	15,807	658	4.0	16,352	15,687	665	4.1
Newport	14,656	14,037	619	4.2	14,880	14,269	611	4.1	14,776	14,159	617	4.2
Paris	13,516	13,008	508	3.8	13,578	13,099	479	3.5	13,498	12,992	506	3.7
Sevierville	54,654	53,279	1,375	2.5	56,786	55,392	1,394	2.5	55,995	54,514	1,481	2.6
Shelbyville	21,264	20,558	706	3.3	21,816	21,061	755	3.5	21,716	20,910	806	3.7
Tullahoma-Manchester	47,322	45,771	1,551	3.3	48,172	46,543	1,629	3.4	48,208	46,465	1,743	3.6
Union City	14,781	14,240	541	3.7	15,070	14,494	576	3.8	15,039	14,396	643	4.3
Cities												
Bartlett	30,569	29,720	849	2.8	30,349	29,414	935	3.1	30,625	29,632	993	3.2
Brentwood	22,803	22,288	515	2.3	23,265	22,656	609	2.6	23,423	22,774	649	2.8
Bristol	11,479	11,117	362	3.2	11,571	11,172	399	3.4	11,582	11,168	414	3.6
Chattanooga	86,568	83,606	2,962	3.4	88,011	84,619	3,392	3.9	88,035	84,652	3,383	3.8
Clarksville	63,846	61,392	2,454	3.8	64,091	61,398	2,693	4.2	64,494	61,761	2,733	4.2
Cleveland	20,352	19,645	707	3.5	20,640	19,839	801	3.9	20,735	19,894	841	4.1
Collierville	25,916	25,237	679	2.6	25,693	24,977	716	2.8	25,917	25,162	755	2.9
Columbia	20,376	19,721	655	3.2	20,684	20,058	626	3.0	20,856	20,177	679	3.3
Cookeville	14,434	13,922	512	3.5	14,466	13,926	540	3.7	14,652	14,056	596	4.1
Franklin	50,775	49,581	1,194	2.4	51,637	50,399	1,238	2.4	52,000	50,662	1,338	2.6
Gallatin	23,966	23,262	704	2.9	24,339	23,646	693	2.8	24,540	23,784	756	3.1
Germantown	19,527	19,024	503	2.6	19,372	18,828	544	2.8	19,557	18,967	590	3.0
Hendersonville	34,604	33,702	902	2.6	35,119	34,257	862	2.5	35,399	34,457	942	2.7
Jackson	31,965	30,872	1,093	3.4	32,019	30,842	1,177	3.7	32,073	30,887	1,186	3.7
Johnson City	31,906	30,903	1,003	3.1	31,679	30,630	1,049	3.3	32,230	31,111	1,119	3.5
Kingsport	22,493	21,677	816	3.6	22,586	21,785	801	3.5	22,660	21,776	884	3.9
Knoxville	98,656	95,752	2,904	2.9	100,549	97,106	3,443	3.4	101,476	98,107	3,369	3.3
LaVergne	19,878	19,358	520	2.6	20,281	19,684	597	2.9	20,411	19,819	592	2.9
Lebanon	18,670	18,121	549	2.9	19,105	18,434	671	3.5	19,245	18,545	700	3.6
Maryville	14,399	13,948	451	3.1	14,564	14,151	413	2.8	14,743	14,285	458	3.1
Memphis	287,917	273,496	14,421	5.0	285,797	270,675	15,122	5.3	286,897	272,683	14,214	5.0
Morristown	11,749	11,313	436	3.7	11,773	11,316	457	3.9	11,875	11,387	488	4.1
Mount Juliet	21,658	21,110	548	2.5	22,088	21,475	613	2.8	22,239	21,604	635	2.9
Murfreesboro	88,286	85,923	2,363	2.7	89,922	87,372	2,550	2.8	90,586	87,971	2,615	2.9
Nashville	411,826	400,935	10,891	2.6	418,902	407,505	11,397	2.7	421,964	410,117	11,847	2.8
Oak Ridge	14,345	13,898	447	3.1	14,570	14,094	476	3.3	14,722	14,238	484	3.3
Smyrna	30,429	29,658	771	2.5	30,975	30,158	817	2.6	31,200	30,365	835	2.7
Spring Hill	26,210	25,621	589	2.2	26,727	26,049	678	2.5	26,885	26,190	695	2.6

Chattanooga MSA

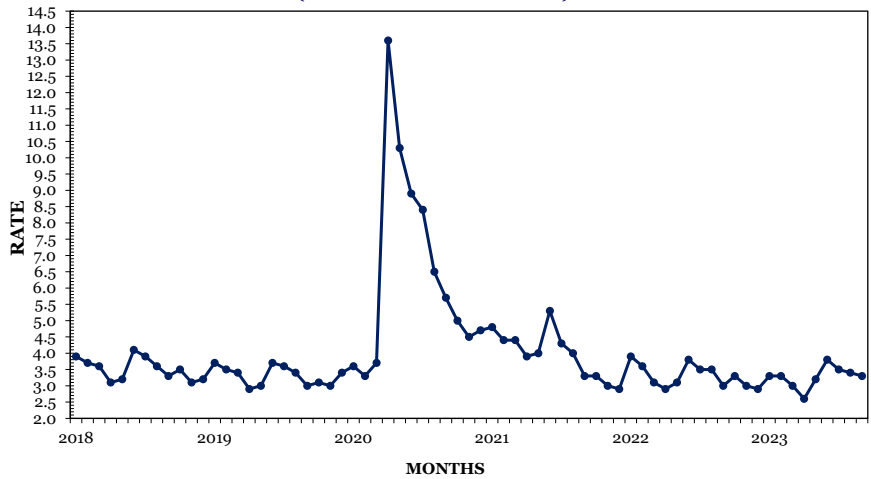
Monthly Employment Changes

Total Nonfarm	+700
State Government	+800
Local Government	+700
Trade, Transportation & Utilities	+400
Retail Trade	+300
Professional & Business Services	+200
Leisure & Hospitality	-1,100
Other Services	-200

Annual Employment Changes

Total Nonfarm	+5,700
Goods-Producing	+1,200
Service-Providing	+4,500

CHATTANOOGA MSA UNEMPLOYMENT RATES (NOT SEASONALLY ADJUSTED)



Estimated Nonfarm Employment (in thousands)

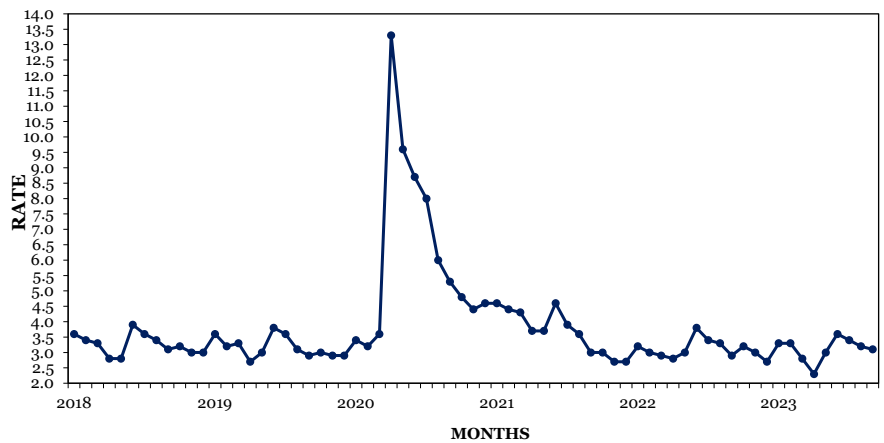
Industry	Sep. 2022	Revised	Preliminary	Net Change	
		Aug. 2023	Sep. 2023	Aug. 2023 Sep. 2023	Sep. 2022 Sep. 2023
Total Nonfarm	276.3	281.3	282.0	0.7	5.7
Total Private	238.7	244.8	244.0	-0.8	5.3
Goods-Producing	52.5	53.7	53.7	0.0	1.2
Mining, Logging, & Construction	13.0	13.6	13.6	0.0	0.6
Manufacturing	39.5	40.1	40.1	0.0	0.6
Durable Goods Manufacturing	24.7	25.3	25.2	-0.1	0.5
Nondurable Goods Manufacturing	14.8	14.8	14.9	0.1	0.1
Service-Providing	223.8	227.6	228.3	0.7	4.5
Trade, Transportation, & Utilities	53.8	53.7	54.1	0.4	0.3
Wholesale Trade	9.2	9.3	9.4	0.1	0.2
Retail Trade	28.1	28.7	29.0	0.3	0.9
Transportation, Warehousing, & Utilities	16.5	15.7	15.7	0.0	-0.8
Information	3.4	3.4	3.4	0.0	0.0
Financial Activities	21.0	21.7	21.7	0.0	0.7
Professional & Business Services	30.5	30.7	30.9	0.2	0.4
Private Education & Health Services	35.5	36.3	36.2	-0.1	0.7
Leisure & Hospitality	29.5	32.2	31.1	-1.1	1.6
Other Services	12.5	13.1	12.9	-0.2	0.4
Government	37.6	36.5	38.0	1.5	0.4
Federal Government	5.8	6.1	6.1	0.0	0.3
State Government	6.5	5.6	6.4	0.8	-0.1
Local Government	25.3	24.8	25.5	0.7	0.2

Knoxville MSA

Monthly Employment Changes

Total Nonfarm	+5,900
State Government	+2,100
Local Government	+1,800
Private Education & Health Services	+900
Mining, Logging, & Construction	+500
Trade, Transportation, & Utilities	+400
Professional & Business Services	+400
Durable Goods Manufacturing	-300
Annual Employment Changes	
Total Nonfarm	+14,500
Goods-Producing	+1,000
Service-Providing	+13,500

KNOXVILLE MSA UNEMPLOYMENT RATES (NOT SEASONALLY ADJUSTED)



Estimated Nonfarm Employment (in thousands)

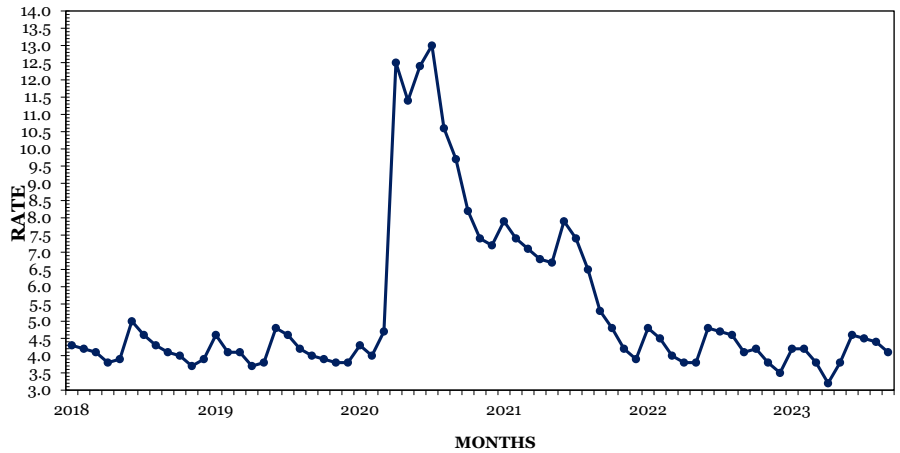
Industry	Sep. 2022	Revised	Preliminary	Net Change	
		Aug. 2023	Sep. 2023	Aug. 2023 Sep. 2023	Sep. 2022 Sep. 2023
Total Nonfarm	433.9	442.5	448.4	5.9	14.5
Total Private	374.2	383.8	385.7	1.9	11.5
Goods-Producing	69.2	69.9	70.2	0.3	1.0
Mining, Logging, & Construction	21.2	21.4	21.9	0.5	0.7
Manufacturing	48.0	48.5	48.3	-0.2	0.3
Durable Goods Manufacturing	36.1	36.9	36.6	-0.3	0.5
Nondurable Goods Manufacturing	11.9	11.6	11.7	0.1	-0.2
Service-Providing	364.7	372.6	378.2	5.6	13.5
Trade, Transportation, & Utilities	84.4	86.5	86.9	0.4	2.5
Wholesale Trade	17.8	18.0	18.0	0.0	0.2
Retail Trade	49.8	51.5	51.7	0.2	1.9
Transportation, Warehousing, & Utilities	16.8	17.0	17.2	0.2	0.4
Information	6.8	6.7	6.7	0.0	-0.1
Financial Activities	20.9	20.7	20.7	0.0	-0.2
Professional & Business Services	71.3	74.9	75.3	0.4	4.0
Private Education & Health Services	57.7	59.4	60.3	0.9	2.6
Leisure & Hospitality	47.4	48.7	48.7	0.0	1.3
Other Services	16.5	17.0	16.9	-0.1	0.4
Government	59.7	58.7	62.7	4.0	3.0
Federal Government	5.3	5.6	5.7	0.1	0.4
State Government	19.5	18.1	20.2	2.1	0.7
Local Government	34.9	35.0	36.8	1.8	1.9

Memphis MSA

Monthly Employment Changes

Total Nonfarm	+6,500
Professional & Business Services	+2,600
Admin, Support & Waste Mgmt Svcs	+2,300
State Government	+1,700
Private Education & Health Services	+1,200
Local Government	+900
Transportation, Warehousing & Utilities	-500
Durable Goods Manufacturing	-400
Annual Employment Changes	
Total Nonfarm	+2,500
Goods-Producing	-1,000
Service-Providing	+3,500

MEMPHIS MSA UNEMPLOYMENT RATES (NOT SEASONALLY ADJUSTED)



Estimated Nonfarm Employment (in thousands)

Industry	Sep. 2022	Revised Aug. 2023	Preliminary Sep. 2023	Aug. 2023 Sep. 2023	Net Change Sep. 2022 Sep. 2023
Total Nonfarm	665.1	661.1	667.6	6.5	2.5
Total Private	579.7	576.1	579.9	3.8	0.2
Goods-Producing	70.4	69.9	69.4	-0.5	-1.0
Mining, Logging, & Construction	25.8	25.6	25.5	-0.1	-0.3
Manufacturing	44.6	44.3	43.9	-0.4	-0.7
Durable Goods Manufacturing	26.1	26.0	25.6	-0.4	-0.5
Nondurable Goods Manufacturing	18.5	18.3	18.3	0.0	-0.2
Service-Providing	594.7	591.2	598.2	7.0	3.5
Trade, Transportation, & Utilities	187.1	183.4	183.7	0.3	-3.4
Wholesale Trade	37.3	37.0	37.3	0.3	0.0
Retail Trade	62.4	62.4	62.9	0.5	0.5
Transportation, Warehousing, & Utilities	87.4	84.0	83.5	-0.5	-3.9
Information	5.7	5.6	5.6	0.0	-0.1
Financial Activities	27.9	27.3	27.1	-0.2	-0.8
Professional & Business Services	100.1	97.7	100.3	2.6	0.2
Professional, Scientific, & Technical Services	27.2	27.8	28.1	0.3	0.9
Management of Companies & Enterprises	9.4	8.9	8.9	0.0	-0.5
Administrative, Support, & Waste Management	63.5	61.0	63.3	2.3	-0.2
Private Education & Health Services	97.6	99.3	100.5	1.2	2.9
Leisure & Hospitality	63.0	64.0	64.7	0.7	1.7
Other Services	27.9	28.9	28.6	-0.3	0.7
Government	85.4	85.0	87.7	2.7	2.3
Federal Government	14.7	16.1	16.2	0.1	1.5
State Government	15.5	14.3	16.0	1.7	0.5
Local Government	55.2	54.6	55.5	0.9	0.3

Nashville MSA

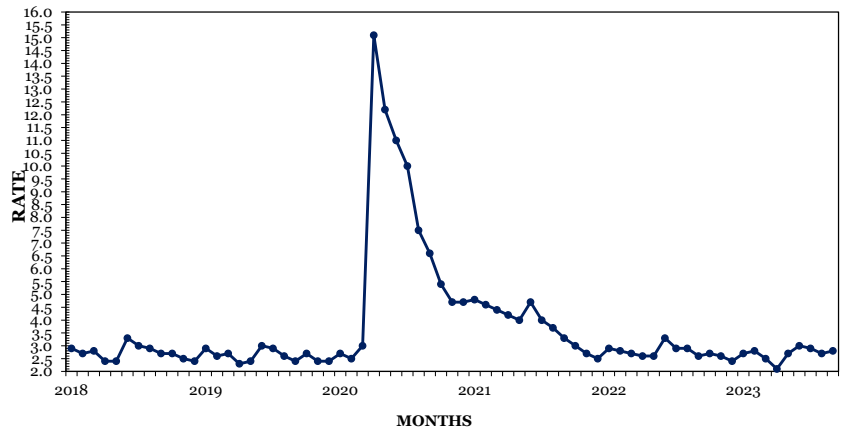
Monthly Employment Changes

Total Nonfarm	+10,700
Private Educational Services	+3,800
Local Government	+3,200
Health Care & Social Assistance	+1,900
Trade, Transportation & Utilities	+1,700
State Government	+1,600
Professional & Business Services	-3,300
Financial Activities	-1,100

Annual Employment Changes

Total Nonfarm	+36,800
Goods-Producing	+3,200
Service-Providing	+33,600

NASHVILLE MSA UNEMPLOYMENT RATES (NOT SEASONALLY ADJUSTED)



Estimated Nonfarm Employment (in thousands)

Industry	Sep. 2022	Revised Aug. 2023	Preliminary Sep. 2023	Net Change Aug. 2023 Sep. 2023	Sep. 2022 Sep. 2023
Total Nonfarm	1138.2	1,164.3	1,175.0	10.7	36.8
Total Private	1015.1	1,043.0	1,048.7	5.7	33.6
Goods-Producing	146.2	148.6	149.4	0.8	3.2
Mining, Logging, & Construction	59.5	59.3	60.0	0.7	0.5
Manufacturing	86.7	89.3	89.4	0.1	2.7
Durable Goods Manufacturing	60.4	63.3	63.2	-0.1	2.8
Nondurable Goods Manufacturing	26.3	26.0	26.2	0.2	-0.1
Service-Providing	992.0	1,015.7	1,025.6	9.9	33.6
Trade, Transportation, & Utilities	220.0	226.1	227.8	1.7	7.8
Wholesale Trade	46.9	50.3	50.9	0.6	4
Retail Trade	102.9	103.3	103.9	0.6	1
Transportation, Warehousing, & Utilities	70.2	72.5	73.0	0.5	2.8
Information	32.1	32.4	32.7	0.3	0.6
Financial Activities	77.2	78.7	77.6	-1.1	0.4
Professional & Business Services	200.3	209.2	205.9	-3.3	5.6
Professional, Scientific, & Technical Services	81.7	90.0	89.5	-0.5	7.8
Management of Companies & Enterprises	29.5	29.5	29.4	-0.1	-0.1
Administrative, Support, & Waste Management	89.1	89.7	87.0	-2.7	-2.1
Private Education & Health Services	166.6	170.0	175.7	5.7	9.1
Private Educational Services	30.1	27.8	31.6	3.8	1.5
Health Care & Social Assistance	136.5	142.2	144.1	1.9	7.6
Leisure & Hospitality	126.7	130.0	131.0	1.0	4.3
Other Services	46.0	48.0	48.6	0.6	2.6
Government	123.1	121.3	126.3	5.0	3.2
Federal Government	14.9	15.9	16.1	0.2	1.2
State Government	29.7	28.0	29.6	1.6	-0.1
Local Government	78.5	77.4	80.6	3.2	2.1



Nonfarm Employment (Smaller MSAs)

	Clarksville, TN-KY MSA		Cleveland, TN MSA		Jackson, TN MSA	
	Aug. 2023 Revised	Sep. 2023 Prelim.	Aug. 2023 Revised	Sep. 2023 Prelim.	Aug. 2023 Revised	Sep. 2023 Prelim.
Total Nonfarm	99,900	100,500	48,500	48,800	72,100	72,400
Total Private	81,600	80,600	43,000	43,000	58,200	58,400
Goods Producing	16,800	16,700	11,500	11,500	15,600	15,600
Mining, Logging & Construction	4,500	4,500	2,500	2,500	3,100	3,100
Manufacturing	12,300	12,200	9,000	9,000	12,500	12,500
Service Providing	83,100	83,800	37,000	37,300	56,500	56,800
Trade, Transportation, & Utilities	19,700	19,700	10,600	10,600	13,400	13,300
Wholesale Trade	N.A.	N.A.	900	900	3,100	3,100
Retail Trade	13,600	13,700	5,600	5,600	7,500	7,400
Transportation, Warehousing, & Utilities	3,100	3,100	4,100	4,100	2,800	2,800
Information	1,200	1,200	300	300	500	500
Financial Activities	3,400	3,400	1,400	1,400	2,100	2,000
Professional & Business Services	10,500	10,500	4,700	4,700	6,800	6,800
Private Educational & Health Services	13,400	13,600	6,500	6,600	11,300	11,700
Leisure & Hospitality	13,100	12,100	5,400	5,300	6,300	6,300
Other Services	3,500	3,400	2,600	2,600	2,200	2,200
Government	18,300	19,900	5,500	5,800	13,900	14,000
Federal Government	5,400	5,500	300	300	500	500
State Government	2,700	3,100	600	700	1,700	1,800
Local Government	10,200	11,300	4,600	4,800	11,700	11,700
	Johnson City, TN MSA		Kingsport-Bristol, TN-VA MSA		Morristown, TN MSA	
	Aug. 2023 Revised	Sep. 2023 Prelim.	Aug. 2023 Revised	Sep. 2023 Prelim.	Aug. 2023 Revised	Sep. 2023 Prelim.
Total Nonfarm	85,800	87,800	124,600	125,000	49,600	50,300
Total Private	69,900	69,900	109,100	109,200	43,000	43,200
Goods Producing	11,500	11,400	27,200	27,100	14,800	14,900
Mining, Logging & Construction	2,900	2,900	6,400	6,300	2,300	2,400
Manufacturing	8,600	8,500	20,800	20,800	12,500	12,500
Service Providing	74,300	76,400	97,400	97,900	34,800	35,400
Trade, Transportation, & Utilities	14,100	14,200	24,700	24,900	10,000	10,100
Wholesale Trade	2,400	2,500	3,700	3,700	1,500	1,500
Retail Trade	10,800	10,800	15,800	15,900	5,900	6,000
Transportation, Warehousing, & Utilities	900	900	5,200	5,300	2,600	2,600
Information	900	900	1,400	1,400	300	300
Financial Activities	5,100	5,100	3,900	3,900	1,100	1,100
Professional & Business Services	10,300	10,300	14,400	14,400	5,100	5,100
Private Educational & Health Services	14,500	14,700	17,400	17,600	5,800	5,900
Leisure & Hospitality	10,600	10,400	14,400	14,100	4,500	4,400
Other Services	2,900	2,900	5,700	5,800	1,400	1,400
Government	15,900	17,900	15,500	15,800	6,600	7,100
Federal Government	3,300	3,300	900	900	300	300
State Government	5,500	6,600	2,400	2,400	1,100	1,300
Local Government	7,100	8,000	12,200	12,500	5,200	5,500

Clarksville MSA is Montgomery County, Christian County, KY, & Trigg County, KY. **Cleveland MSA** is Bradley & Polk counties. **Jackson MSA** is Chester, Crockett, & Madison counties. **Johnson City MSA** is Carter, Unicoi, & Washington counties. **Kingsport-Bristol MSA** is Hawkins County, Sullivan County, Scott County, VA, Washington County, VA, & Bristol City, VA. **Morristown MSA** is Hamblen & Jefferson counties.

U.S. Consumer Price Index — September 2023

Group	All Urban Consumers			Urban Wage Earners & Clerical Workers		
	Index	Percent Change		Index	Percent Change	
		Monthly	Yearly		Monthly	Yearly
U.S. City Average						
All Items (1982-84=100)	307.789	0.2	3.7	303.257	0.2	3.6
Food and beverages	322.249	0.2	3.7	321.829	0.2	3.8
Housing	323.563	0.3	5.6	319.668	0.5	5.4
Apparel	133.157	1.4	2.3	133.281	1.5	2.9
Transportation	272.517	-0.6	2.4	278.305	-0.5	3.1
Medical care	548.531	0.1	-1.4	553.950	0.0	-2.2
South						
All Items (1982-84=100)	299.657	0.2	4.2	295.225	0.1	4.0
Food and beverages	317.276	0.2	3.8	316.661	0.2	3.9
Housing	303.938	0.8	6.4	304.728	0.7	6.3
Apparel	143.046	2.2	2.7	142.609	1.9	2.8
Transportation	273.572	-1.2	3.1	274.186	-1.3	3.6
Medical care	515.166	-0.3	-2.1	527.460	-0.4	-2.4

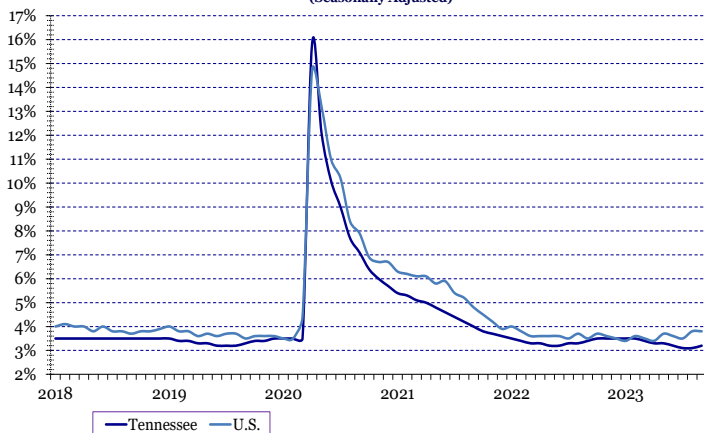
Hours And Earnings Of Production Workers

	Average Weekly Earnings			Average Hourly Earnings			Average Weekly Hours		
	Sep.	Aug.	Sep.	Sep.	Aug.	Sep.	Sep.	Aug.	Sep.
	2022	2023	2023	2022	2023	2023	2022	2023	2023
Manufacturing	\$906.19	\$944.06	\$950.03	\$22.32	\$23.72	\$23.87	40.6	39.8	39.8
Durable Goods Manufacturing	\$959.14	\$1,012.23	\$1,000.76	\$23.28	\$24.45	\$24.71	41.2	41.4	40.5
Non-Durable Goods Manufacturing	\$817.74	\$828.44	\$863.48	\$20.65	\$22.33	\$22.37	39.6	37.1	38.6

All Employee Hours And Earnings

	Average Weekly Earnings			Average Hourly Earnings			Average Weekly Hours		
	Sep.	Aug.	Sep.	Sep.	Aug.	Sep.	Sep.	Aug.	Sep.
	2022	2023	2023	2022	2023	2023	2022	2023	2023
Total Private	\$1,002.14	\$1,048.09	\$1,042.30	\$28.47	\$29.86	\$29.78	35.2	35.1	35.0
Goods-Producing	\$1,199.30	\$1,287.34	\$1,274.43	\$29.18	\$31.63	\$31.39	41.1	40.7	40.6
Mining, Logging & Construction	\$1,246.25	\$1,290.41	\$1,276.38	\$30.03	\$32.02	\$31.83	41.5	40.3	40.1
Manufacturing	\$1,178.74	\$1,287.12	\$1,272.96	\$28.82	\$31.47	\$31.20	40.9	40.9	40.8
Private Service-Providing	\$958.35	\$993.04	\$988.76	\$28.27	\$29.38	\$29.34	33.9	33.8	33.7
Trade, Transportation, & Utilities	\$894.20	\$912.26	\$905.86	\$26.07	\$26.99	\$26.96	34.3	33.8	33.6
Information	\$1,338.26	\$1,282.18	\$1,273.79	\$34.67	\$34.56	\$34.52	38.6	37.1	36.9
Financial Activities	\$1,411.48	\$1,469.27	\$1,435.40	\$38.46	\$39.71	\$38.69	36.7	37.0	37.1
Professional & Business Services	\$1,243.60	\$1,349.77	\$1,355.57	\$33.43	\$36.09	\$36.44	37.2	37.4	37.2
Private Education & Health Services	\$912.80	\$958.63	\$954.60	\$26.69	\$28.03	\$27.75	34.2	34.2	34.4
Leisure & Hospitality	\$482.85	\$510.83	\$505.03	\$18.50	\$18.99	\$19.13	26.1	26.9	26.4
Other Services	\$941.12	\$834.50	\$847.02	\$27.20	\$25.06	\$25.36	34.6	33.3	33.4

TENNESSEE & UNITED STATES
UNEMPLOYMENT RATES
(Seasonally Adjusted)



TENNESSEE & UNITED STATES
LABOR FORCE PARTICIPATION RATES
(Seasonally Adjusted)

